

WETHERBY MANSIONS | EARLS COURT SQUARE | SW5 Winkworth



45 Wetherby Mansions, Earls Court Square,

London, SW5 9BH

Exuding Victorian grandeur, this first floor (with lift) lateral apartment extends to over 2,000sq/ft and is in need of complete modernisation.

The current layout provides four double bedrooms, three reception rooms, one bathroom and two WCs. With the necessary building consent there is scope to rearrange and modernise the space to provide a more contemporary floorplate, bringing 21st century technology into a superb period shell. With private outside space as well as access to award winning communal gardens and a share in the Freehold, this is a must-see property.

ASKING PRICE: £2,200,000 Subject to Contract

TENURE: Share of Freehold

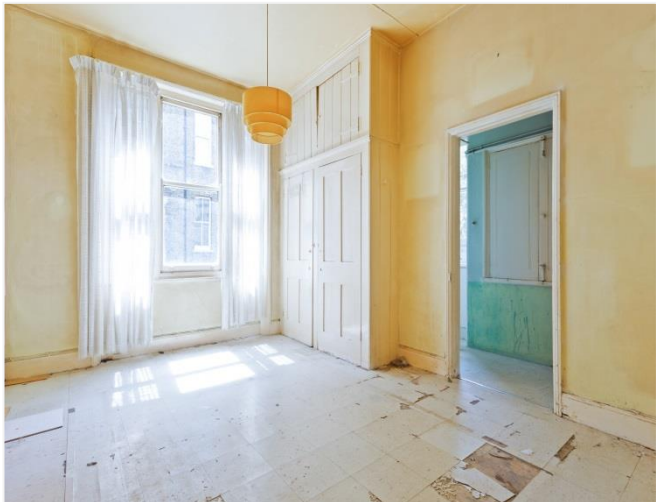
LOCAL AUTHORITY: The Royal Borough of Kensington & Chelsea

COUNCIL TAX BAND: Band G

SERVICE CHARGE: To be confirmed

GROUND RENT: To be confirmed





LOCATION:

Wetherby Mansions is located on the Eastern side of Earl's Court Square, only a five minutes' walk from Earl's Court Station offering superb transport links both into and out of Central London. There are also a great variety of shops and restaurants on the doorstep.

Entrance hall | Three reception rooms | Kitchen | Four bedrooms | Bathroom | Two WCs | Balcony | Lift | Access to communal gardens (STTUC)

WETHERBY MANSIONS, EARL'S COURT SQUARE SW5

APPROX. GROSS INTERNAL AREA *

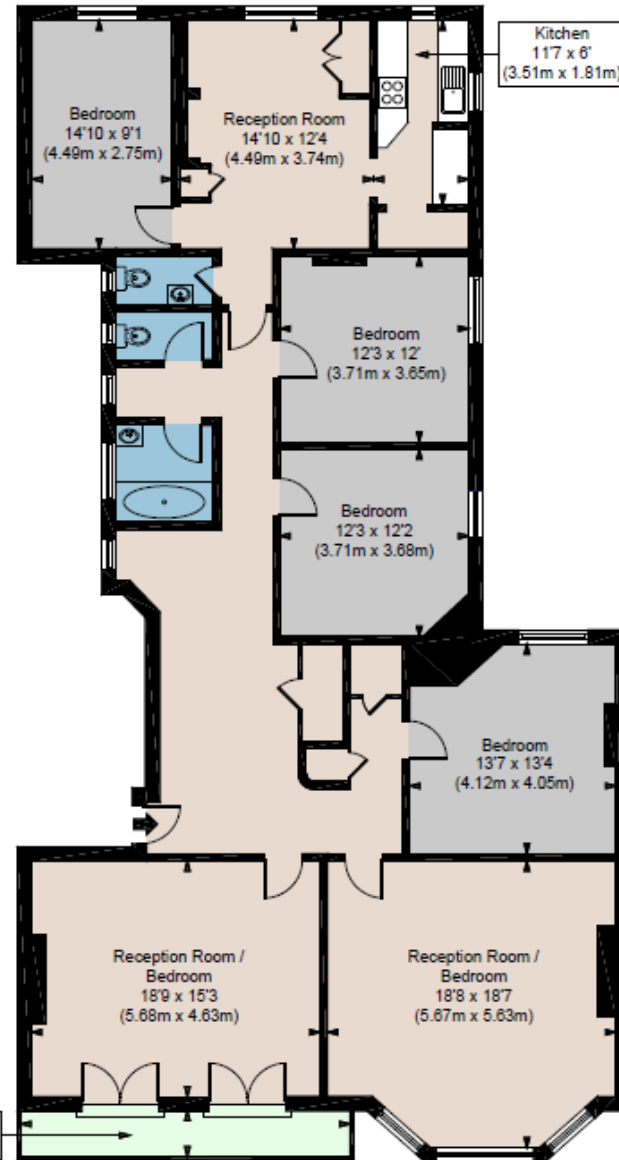
2052 Ft² - 190.63 M²

* Measurements taken from supplied plans

Illustration For Identification Only, Not to Scale

All Calculations include Any/All Areas Under 1.5m Head Height.

* As Defined by RICS - Code of Measuring Practice



FIRST FLOOR

This floorplan is for illustration purposes only and is not to scale. The position and size of doors, windows, appliances and other features are approximate

Winkworth

South Kensington Sales | 020 7373 5052

southkensington@winkworth.co.uk

See things differently

Floorplan is for illustrative purposes only and is not to scale. Every attempt has been made to ensure the accuracy of the floorplan shown, however all measurements, fixtures, fittings and data shown are an approximate interpretation for illustrative purposes only. Liability for errors, omissions or mis-statement through negligence or otherwise is hereby excluded.

CP CREATIVE
PROPERTY MARKETING