



BICKERSTETH ROAD, SW17
£545,000 SHARE OF FREEHOLD

TWO DOUBLE BEDROOM GROUND FLOOR GARDEN MAISONNETTE

Tooting | 020 8767 5221 | tooting@winkworth.co.uk

Winkworth

for every step...

winkworth.co.uk



DESCRIPTION:

Fantastic two double bedroom ground floor maisonette. Offered to the market chain-free and a share of the freehold. Presented in good condition having recently benefitted from some refurbishment.

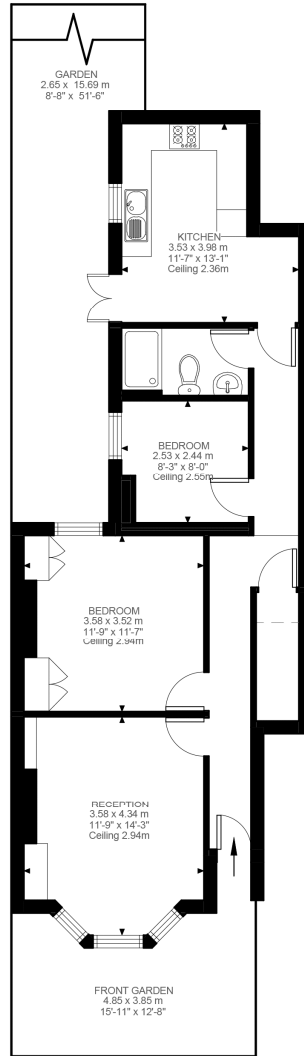
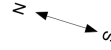
This delightful Victorian property features, two good size double bedrooms, bay-fronted reception with period fireplace, alcove cabinetry and plantation shutters. Shaker style kitchen with solid wood worktops. Shower room and private garden.

Tenure: Share of Freehold

Council tax: Wandsworth band C

Located on a desirable Victorian road in the heart of Tooting Graveney a short walk from Tooting Broadway tube, bars, restaurants, and amenities.





Ground Floor
689 ft²

Bickersteth Street, SW17
Approximate Gross Internal Area
64.03 SQ.M / 689 SQ.FT

Illustration for identification purposes only. Not to scale.
Floor Plan Drawn According To RICS Guidelines.

This floorplan is for illustration purposes only and is not to scale. The position and size of doors, windows, appliances and other features are approximate.

Energy Efficiency Rating		Current	Potential
Very energy efficient - lower running costs			
(92-)	A		
(81-91)	B		
(69-80)	C	69	73
(55-68)	D		
(39-54)	E		
(21-38)	F		
(1-20)	G		
Not energy efficient - higher running costs			
England, Scotland & Wales		EU Directive 2002/91/EC	

Tooting | 020 8767 5221 | tooting@winkworth.co.uk



for every step...

winkworth.co.uk

Winkworth wishes to inform prospective buyers and tenants that these particulars are a guide and act as information only. All our details are given in good faith and believed to be correct at the time of printing but they don't form part of an offer or contract. No Winkworth employee has authority to make or give any representation or warranty in relation to this property. All fixtures and fittings, whether fitted or not are deemed removable by the vendor unless stated otherwise and room sizes are measured between internal wall surfaces, including furnishings.