



WYKEHAM COURT, WYKEHAM ROAD, HENDON, NW4
£600,000 SHARE OF FREEHOLD

**STUNNING AND SPACIOUS APARTMENT
LOCATED ON THE FIRST FLOOR OF A WELL
LOCATED, POPULAR PURPOSE BUILT BLOCK...**

Hendon | 020 8202 1031 | hendon@winkworth.co.uk

Winkworth

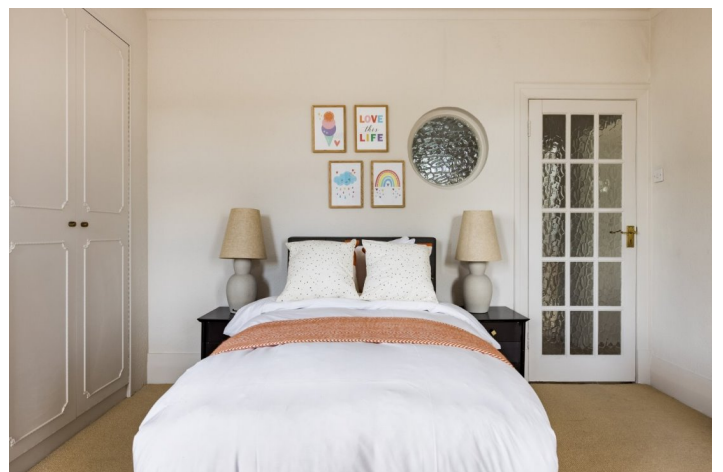
for every step...

winkworth.co.uk



DESCRIPTION:

Stunning and spacious apartment located on the first floor of a well located, popular purpose built block. This lovely apartment which has been newly refurbished to a high standard comprises; large master bedroom with en-suite bathroom and fitted wardrobes, second double bedroom with fitted wardrobes, third double bedroom, separate fully fitted integrated kitchen, further family bathroom and a large living room. Wykeham Road is well located only a few minutes' walk to Hendon Central Station while also being close to the many other amenities the area has to offer. SHARE OF FREEHOLD.



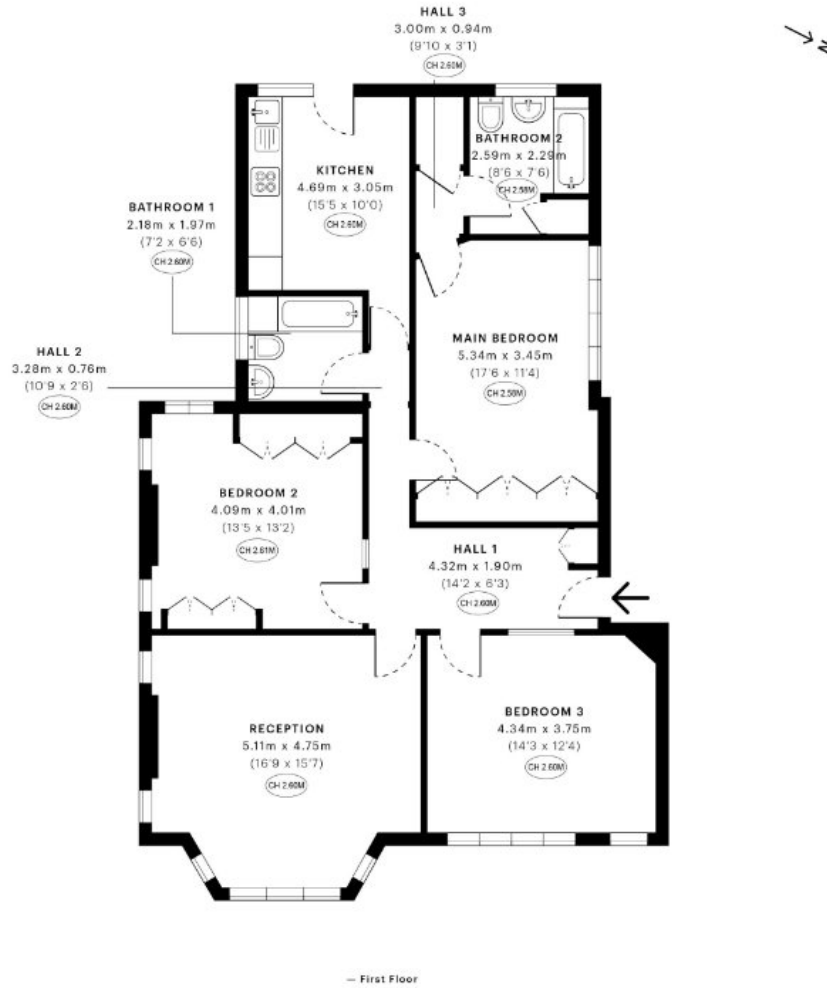
Winkworth

for every step...



Winkworth

for every step...



<p>GROSS INTERNAL AREA (GIA) The footprint of the property 113.70 sqm / 1223.86 sqft</p>	<p>NET INTERNAL AREA (NIA) Excludes walls and external features Includes windows, restricted head height 107.07 sqm / 1152.49 sqft</p>	<p>EXTERNAL STRUCTURAL FEATURES Balconies, terraces, verandas etc. 0.00 sqm / 0.00 sqft</p>	<p>RESTRICTED HEAD HEIGHT Limited use area under 1.5 m 0.00 sqm / 0.00 sqft</p>
--	--	---	---



Spec Verified floor plans are produced in accordance with Royal Institution of Chartered Surveyors' Property Measurement Standards. Plots and gardens are illustrative only and excluded from all area calculations. Due to rounding, numbers may not add up precisely. All measurements shown for the individual room lengths and widths are the maximum points of measurements captured in the scan.

IPMS 3B RESIDENTIAL 116.48 sqm / 1253.78 sqft
IPMS 3C RESIDENTIAL 110.39 sqm / 1188.23 sqft
#PEC ID: 62825e4f3d10d3d2f6d353e

This floorplan is for illustration purposes only and is not to scale. The position and size of doors, windows, appliances and other features are approximate.