



TWYFORD AVENUE, LONDON, W3  
**£795,000**

Ealing & Acton | 0208 896 0123 | ealing@winkworth.co.uk



for every step...

[winkworth.co.uk](http://winkworth.co.uk)



## DESCRIPTION:

The Atelier is a stunning development of luxury apartments, set in an impressive period house offering spacious living accommodation and off-street parking with the benefit of a long lease.

Three spacious bedrooms and two bathrooms.

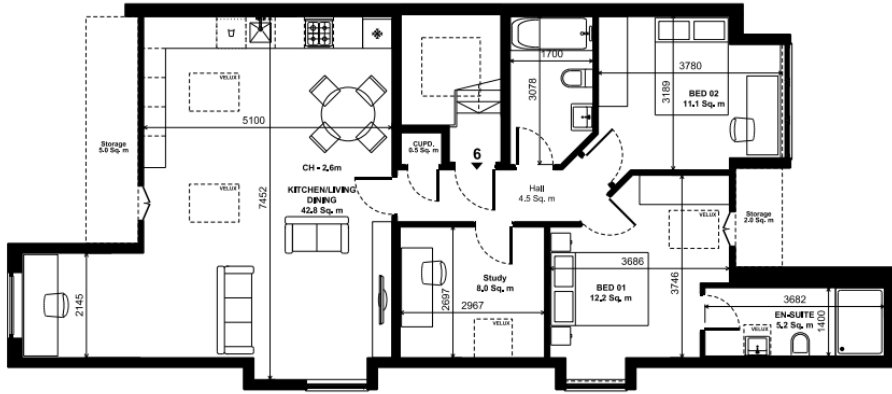
Luxury finishes throughout with bespoke, fully integrated kitchens, 'Moonstone' worktops, underfloor heating throughout and the benefit of Smart Home Technology. Spacious bedrooms with floor to ceiling integrated wardrobes and contemporary, luxury Italian bathrooms.

Located on Twyford Avenue moments from Ealing Common with a variety of shops and transport links. Ealing Broadway is within close proximity.

**Winkworth**

for every step...

FLAT 6 - 64 Twyford Avenue, London W3 (2 Bed + Study Apartment)



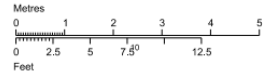
Dimensions

Hallway	4.5 Sq. m	48.3 Sq. '
Storage	7.5 Sq. m	80.6 Sq. '
Kitchen/Living/Dining room	42.8 Sq. m	461.2 Sq. '
Bathroom	4.9 Sq. m	53.2 Sq. '
En-suite (Bed 1)	5.2 Sq. m	55.5 Sq. '
Bedroom 1	12.2 Sq. m	131.3 Sq. '
Bedroom 2	11.1 Sq. m	120.0 Sq. '
Study	8.0 Sq. m	85.7 Sq. '
<b>Total Gross Internal</b>	<b>92.1 Sq. m</b>	<b>991.4 Sq. '</b>

Level location

Floor locator

- 2<sup>nd</sup> floor
- 1<sup>st</sup> floor
- Ground Floor
- Basement



for every step...

Ealing & Acton | 0208 896 0123 | ealing@winkworth.co.uk

**Winkworth**

**for every step...**

*winkworth.co.uk*

Winkworth wishes to inform prospective buyers and tenants that these particulars are a guide and act as information only. All our details are given in good faith and believed to be correct at the time of printing but they don't form part of an offer or contract. No Winkworth employee has authority to make or give any representation or warranty in relation to this property. All fixtures and fittings, whether fitted or not are deemed removable by the vendor unless stated otherwise and room sizes are measured between internal wall surfaces, including furnishings.