



HIGHLEVER ROAD, LONDON, W10
£5000.00 PER MONTH UNFURNISHED

QUAINT FOUR BEDROOM EDWARDIAN HOME ON A PREMIER ROAD IN NORTH KENSINGTON

North Kensington | 020 7792 5000 | northkensington@winkworth.co.uk



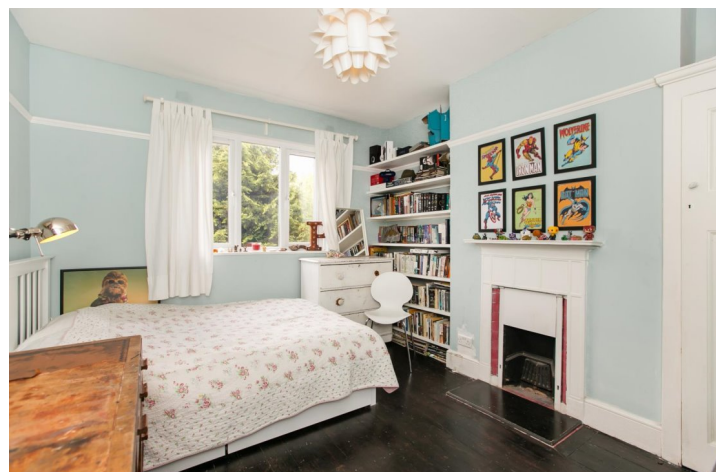
for every step...

winkworth.co.uk



DESCRIPTION:

A stunning four bedroom Edwardian house which is set on three floors each filled with an abundance of charm and period features.



Winkworth

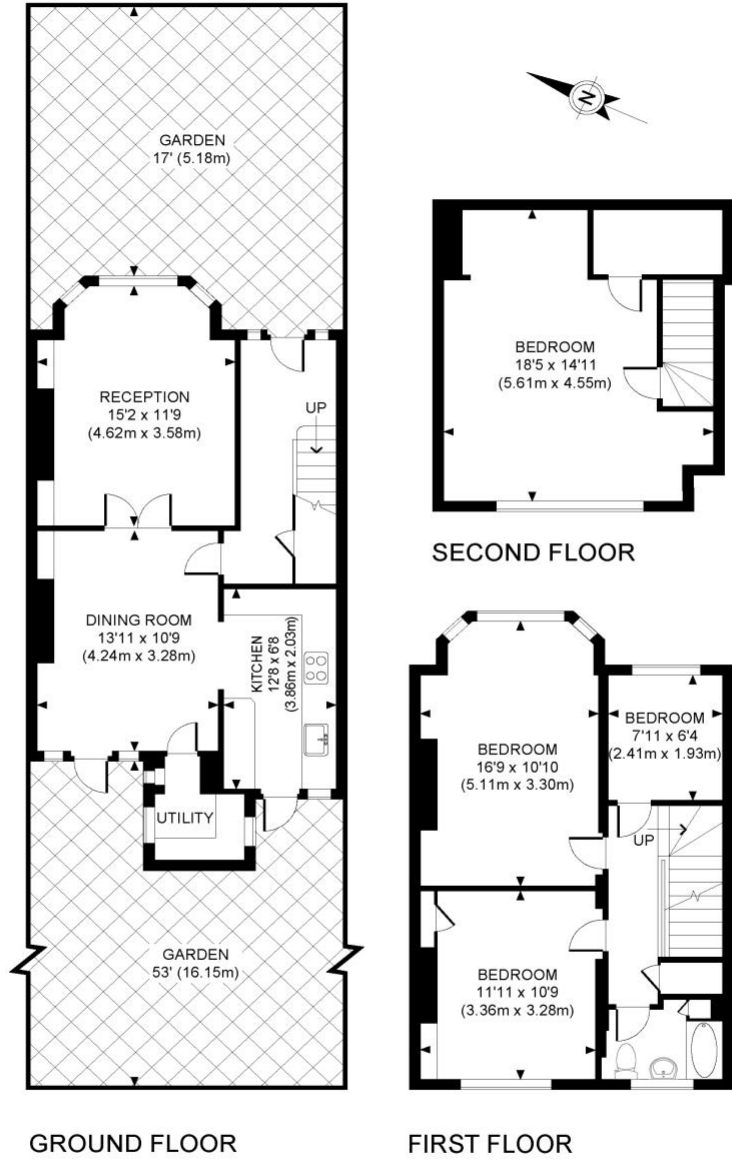
for every step...



Winkworth

for every step...

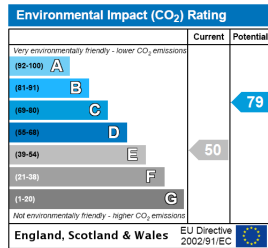
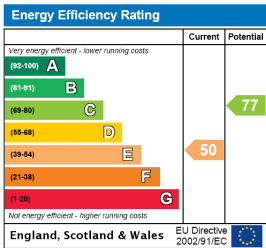
Highlever Road, W10



APPROXIMATE GROSS INTERNAL AREA 1318 SQ FT / 122.45 SQ M

Whilst every attempt has been made to ensure the accuracy of this floor plan; measurements of door, windows, rooms and all other items are approximate. No responsibility is taken for any error, omission or mis-statement. This floor plan is for illustrative purposes only, and should be treated as such.

This floorplan is for illustration purposes only and is not to scale. The position and size of doors, windows, appliances and other features are approximate.



North Kensington | 020 7792 5000 | northkensington@winkworth.co.uk



for every step...

winkworth.co.uk

Winkworth wishes to inform prospective buyers and tenants that these particulars are a guide and act as information only. All our details are given in good faith and believed to be correct at the time of printing but they don't form part of an offer or contract. No Winkworth employee has authority to make or give any representation or warranty in relation to this property. All fixtures and fittings, whether fitted or not are deemed removable by the vendor unless stated otherwise and room sizes are measured between internal wall surfaces, including furnishings.