

LEXHAM GARDENS, W8

£650,000 SHARE OF FREEHOLD

A ONE BEDROOM FLAT SITUATED ON THE RAISED GROUND FLOOR OF A BROAD VICTORIAN TERRACED HOUSE.

Kensington | 020 7727 1500 | kensington@winkworth.co.uk

Winkworth

for every step...

winkworth.co.uk



DESCRIPTION:

A one bedroom flat situated on the raised ground floor of a broad Victorian terraced house. The property has high ceilings and wood flooring. Accommodation includes a south facing reception room with a large triple sash window and working shutters. There is a separate kitchen, a double bedroom, en suite bathroom and a separate WC.

Lexham Gardens is located to the south of Kensington High Street with its many excellent shops, restaurants and transport facilities. The green open spaces at Holland Park are also within easy walking distance.

ACCOMODATION:

Entrance Hall | Reception Room | Kitchen | Bedroom | Bathroom | Separate WC

LOCAL AUTHORITY:

The Royal Borough of Kensington & Chelsea

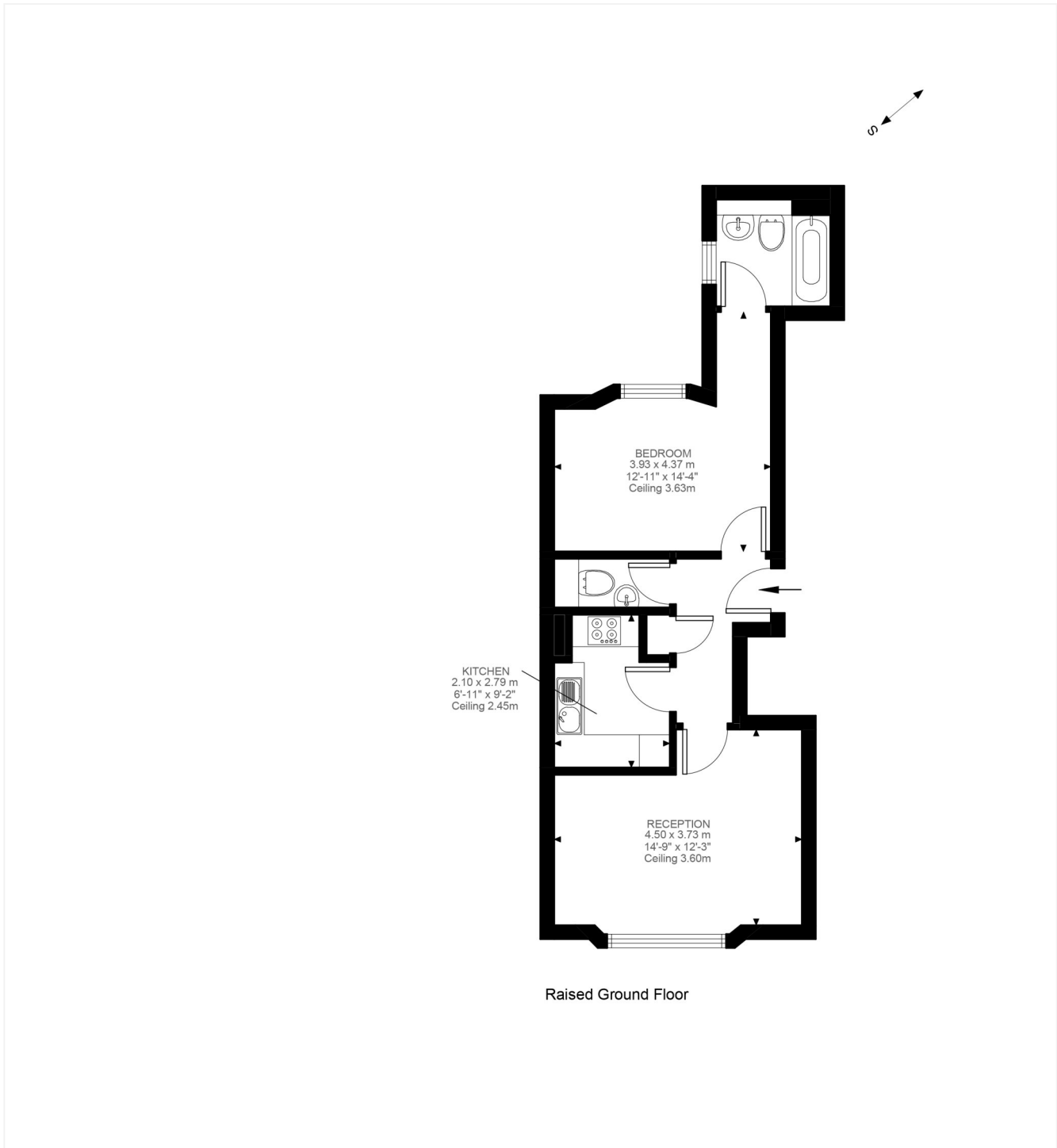
NEAREST PUBLIC TRANSPORT:

High Street Kensington

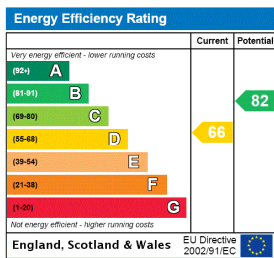
Earl's Court

Gloucester Road





This floorplan is for illustration purposes only and is not to scale. The position and size of doors, windows, appliances and other features are approximate.



Lease: 101 years remaining
Ground Rent: TBC
Service Charge: TBC
Council tax band: C

Please note all figures are approximate

Kensington | 020 7727 1500 | kensington@winkworth.co.uk



for every step...

winkworth.co.uk

Winkworth wishes to inform prospective buyers and tenants that these particulars are a guide and act as information only. All our details are given in good faith and believed to be correct at the time of printing but they don't form part of an offer or contract. No Winkworth employee has authority to make or give any representation or warranty in relation to this property. All fixtures and fittings, whether fitted or not are deemed removable by the vendor unless stated otherwise and room sizes are measured between internal wall surfaces, including furnishings.