



**DOLLIS PARK, LONDON, N3  
OIEO £600,000 LEASEHOLD**

## **A DELIGHTFUL TWO BEDROOM GROUND FLOOR MAISONETTE WITH PRIVATE REAR GARDEN & POTENTIAL TO EXTEND (STPP)**

Finchley | 020 8349 3388 | [finchley@winkworth.co.uk](mailto:finchley@winkworth.co.uk)

**Winkworth**

for every step...

[winkworth.co.uk](http://winkworth.co.uk)



## DESCRIPTION:

We are delighted to offer this well-presented two bedroom ground floor period style maisonette located in this much sought-after turning in Church End, Finchley, ideally located for all the amenities on Ballards Lane, Finchley Central underground station and bus routes, Good Ofsted Rated St. Mary's Primary School, as well as recreational parkland such as Stephens House & Gardens and Dollis Brook. The property comprises of two double bedrooms, modern bathroom, large reception room leading to kitchen and overlooking private rear garden. Further benefits include a long lease, off street parking and potential to extend (stpp). An internal viewing is highly recommended!

## AT A GLANCE

- Ground floor maisonette
- Two bedrooms
- Spacious reception room
- Modern kitchen & bathroom
- Private rear garden
- Off street parking
- Potential to extend (stpp)





Winkworth



Winkworth



Winkworth



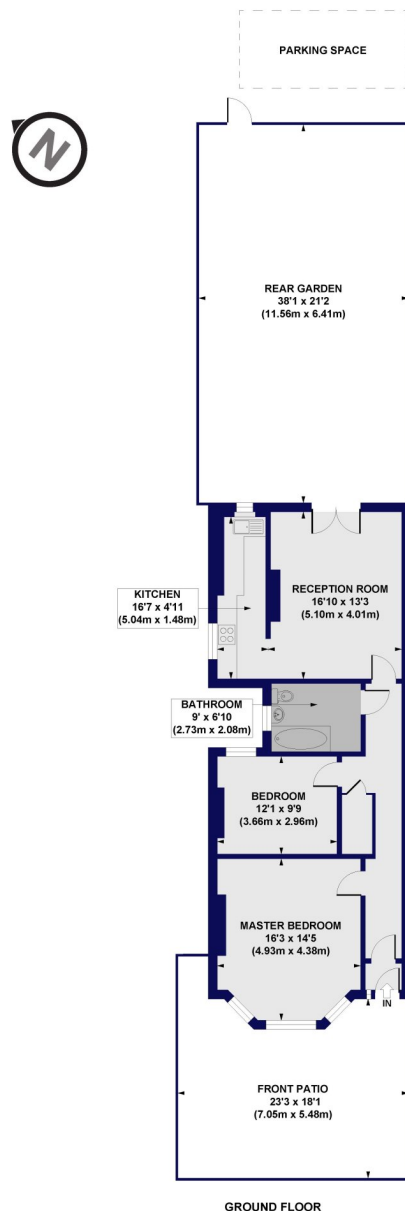
Winkworth



Winkworth

# Dollis Park, N3

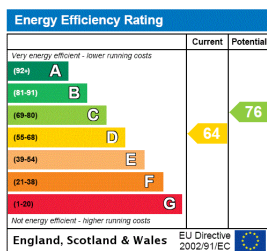
## Approx. Gross Internal Floor Area 946 sq. ft / 87.88 sq. m



All measurements of walls, doors, windows, fittings and appliances, including their size and location, are shown as standard sizes and do not constitute any warranty or representation by the seller, their agent or CP Creative. Any intending purchaser must satisfy himself by inspection or otherwise as to the correctness of the information contained in these plans. This plan is for illustrative purposes only and should be used as such by any prospective purchasers.

**Winkworth**

This floorplan is for illustration purposes only and is not to scale. The position and size of doors, windows, appliances and other features are approximate.



Finchley | 020 8349 3388 | finchley@winkworth.co.uk

**Winkworth**

for every step...

winkworth.co.uk

Winkworth wishes to inform prospective buyers and tenants that these particulars are a guide and act as information only. All our details are given in good faith and believed to be correct at the time of printing but they don't form part of an offer or contract. No Winkworth employee has authority to make or give any representation or warranty in relation to this property. All fixtures and fittings, whether fitted or not are deemed removable by the vendor unless stated otherwise and room sizes are measured between internal wall surfaces, including furnishings.