

HENDON LANE, LONDON, N3
£850,000 SHARE OF FREEHOLD

A LUXURIOUS THREE BEDROOM, TWO BATHROOM FIRST FLOOR PURPOSE BUILT APARTMENT

Finchley | 020 8349 3388 | finchley@winkworth.co.uk

Winkworth

for every step...

winkworth.co.uk

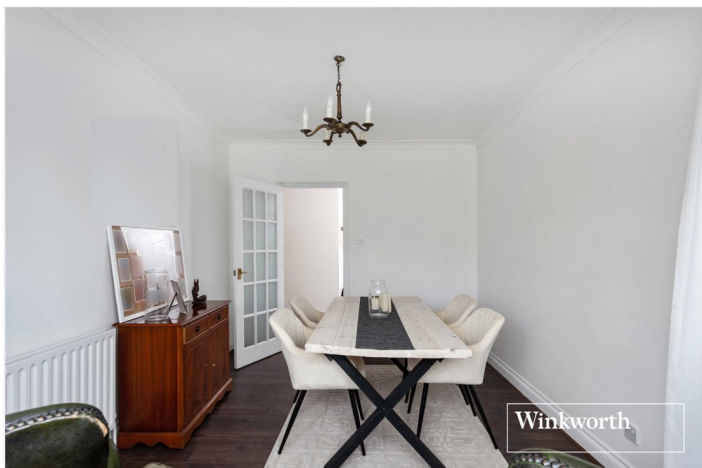


DESCRIPTION:

A luxurious three bedroom, two bathroom first floor purpose built apartment set in a modern block on the ever popular Hendon Lane, being ideally located for amenities on Regents Park Road and Temple Fortune, as well as finchley Central underground station, Akiva and St. Theresa's Primary Schools and recreational parkland, such as College Farm and Stephens House & Gardens. The property comprises of reception room, three bedrooms, two bathrooms, lift-in-block, garage and communal gardens. An internal viewing is highly recommended!

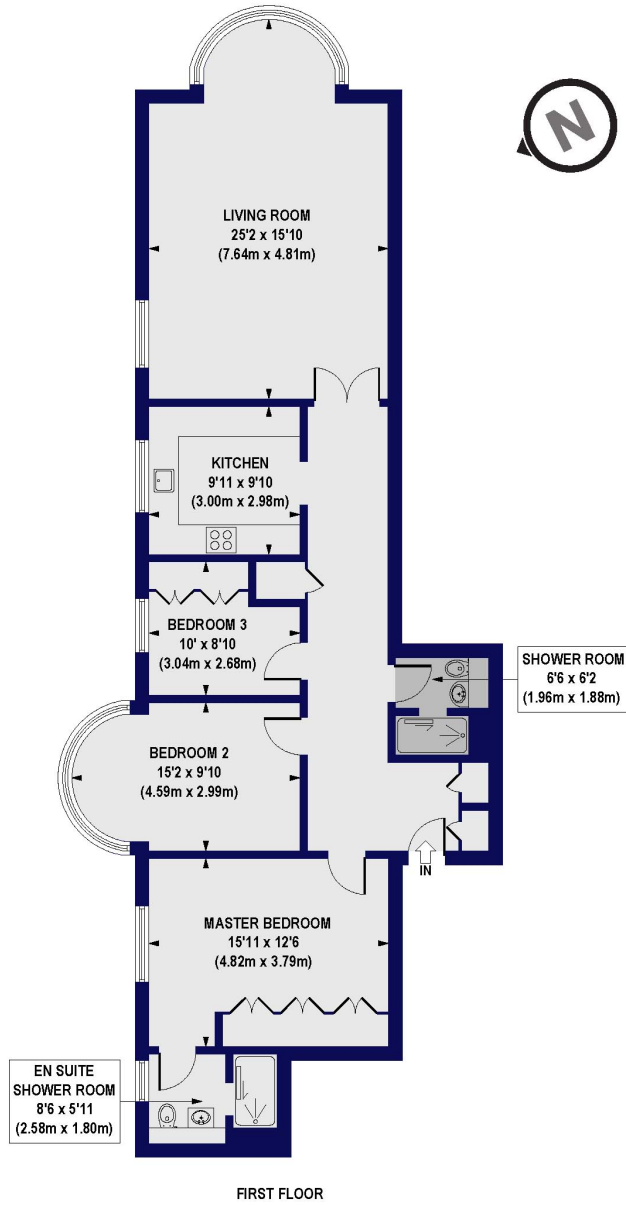
AT A GLANCE

- Purpose built apartment
- First floor
- Reception
- Three bedrooms
- Two bathrooms
- Lift-in-Block
- Garage
- Communal Gardens





Hendon Lane, N3
Approx. Gross Internal Floor Area 1195 sq. ft / 111.05 sq. m



All measurements of walls, doors, windows, fittings and appliances, including their size and location, are shown as standard sizes and do not constitute any warranty or representation by the seller, their agent or CP Creative. Any intending purchaser must satisfy himself by inspection or otherwise as to the correctness of the information contained in these plans. This plan is for illustrative purposes only and should be used as such by any prospective purchasers.



This floorplan is for illustration purposes only and is not to scale. The position and size of doors, windows, appliances and other features are approximate.

Energy Efficiency Rating		Current	Potential
Very energy efficient - lower running costs			
(92-100)	A		
(81-91)	B		
(69-80)	C	80	80
(55-68)	D		
(39-54)	E		
(21-38)	F		
(1-20)	G		
Not energy efficient - higher running costs			
England, Scotland & Wales		EU Directive 2002/91/EC	



Finchley | 020 8349 3388 | finchley@winkworth.co.uk

for every step...

winkworth.co.uk

Winkworth wishes to inform prospective buyers and tenants that these particulars are a guide and act as information only. All our details are given in good faith and believed to be correct at the time of printing but they don't form part of an offer or contract. No Winkworth employee has authority to make or give any representation or warranty in relation to this property. All fixtures and fittings, whether fitted or not are deemed removable by the vendor unless stated otherwise and room sizes are measured between internal wall surfaces, including furnishings.