



GREYHOUND ROAD, W14
£450,000 LEASEHOLD

Fulham & Parsons Green | 020 7731 3388 | fulham@winkworth.co.uk

Winkworth

for every step...

winkworth.co.uk



DESCRIPTION:

A spacious and bright one bedroom flat in an attractive purpose built block in the popular Barons Court / West Kensington area.

The flat is well proportioned with an open plan kitchen/ reception room, one double bedroom and bathroom which comprises a bath with shower above, sink with vanity mirror above and W.C.

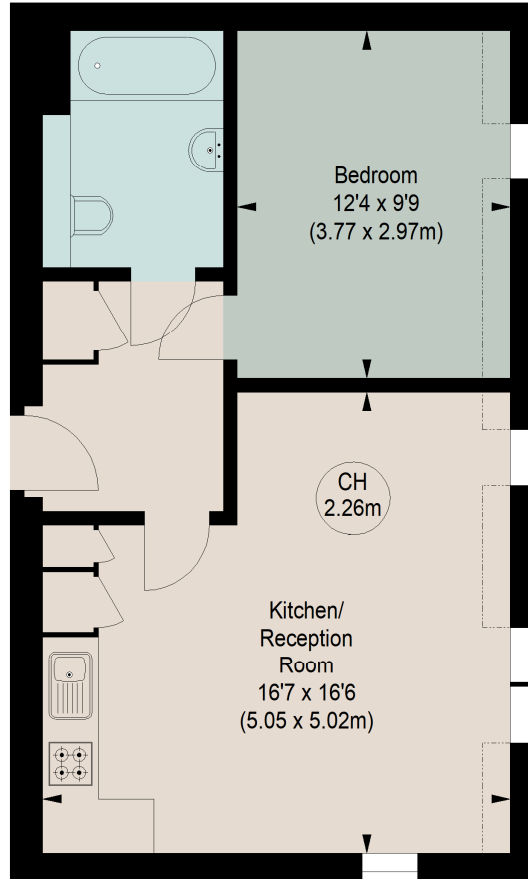
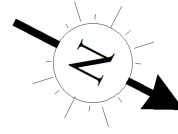
Jubilee Mansions is located in the heart of Barons Court and is a short walk from both West Kensington (District line) and Barons Court tube stations (Piccadilly and District). The property is located around the corner from Queens Club as well as being close to local amenities, restaurants and two excellent local pubs.



JUBILEE MANSIONS, W14

Approximate gross internal area
486 sq ft / 45.15 sq m

Key :
CH - Ceiling Height



FOURTH FLOOR

Illustration For Identification Purposes Only.
All measurements and areas are approximate, not to scale.

This floorplan is for illustration purposes only and is not to scale. The position and size of doors, windows, appliances and other features are approximate.

Fulham & Parsons Green | 020 7731 3388 | fulham@winkworth.co.uk

Winkworth

for every step...

winkworth.co.uk

Winkworth wishes to inform prospective buyers and tenants that these particulars are a guide and act as information only. All our details are given in good faith and believed to be correct at the time of printing but they don't form part of an offer or contract. No Winkworth employee has authority to make or give any representation or warranty in relation to this property. All fixtures and fittings, whether fitted or not are deemed removable by the vendor unless stated otherwise and room sizes are measured between internal wall surfaces, including furnishings.