



NIGEL ROAD, PECKHAM RYE, SE15  
£1,500,000 FREEHOLD

THIS STUNNING FIVE-BEDROOM FAMILY HOME HAS BEEN COMPLETELY REBUILT TO MODERN STANDARDS.

Dulwich | 020 8299 2722 | [dulwich@winkworth.co.uk](mailto:dulwich@winkworth.co.uk)

**Winkworth**

[winkworth.co.uk](http://winkworth.co.uk)

See things differently





## DESCRIPTION:

A one-of-a-kind, beautiful, family home situated in a prime location in Peckham Rye. This stunning family home has been completely rebuilt to modern standards. Situated over three floors the property offers a stunning double reception with impressively high ceilings and immaculate wood flooring. The kitchen has been extended into the side and rear and fitted with a top-of-the-range, bespoke, fully-fitted kitchen. The garden offers a large patio area and a separate astroturfed section, the garden further boasts rear access for parking. The first floor comprises three large double bedrooms and a family bathroom, complete with a walk-in shower and a freestanding bath. The loft has been extended to provide two large double bedrooms, one of which is en-suite and one offering a private terrace. A separate family bathroom and access to the most spectacular roof terrace. The location offers fantastic school catchments, amazing transport links with the overground services at Peckham Rye station, and great access to shops, bars, and restaurants on Lordship Lane, Bellenden Road, and Rye Lane.

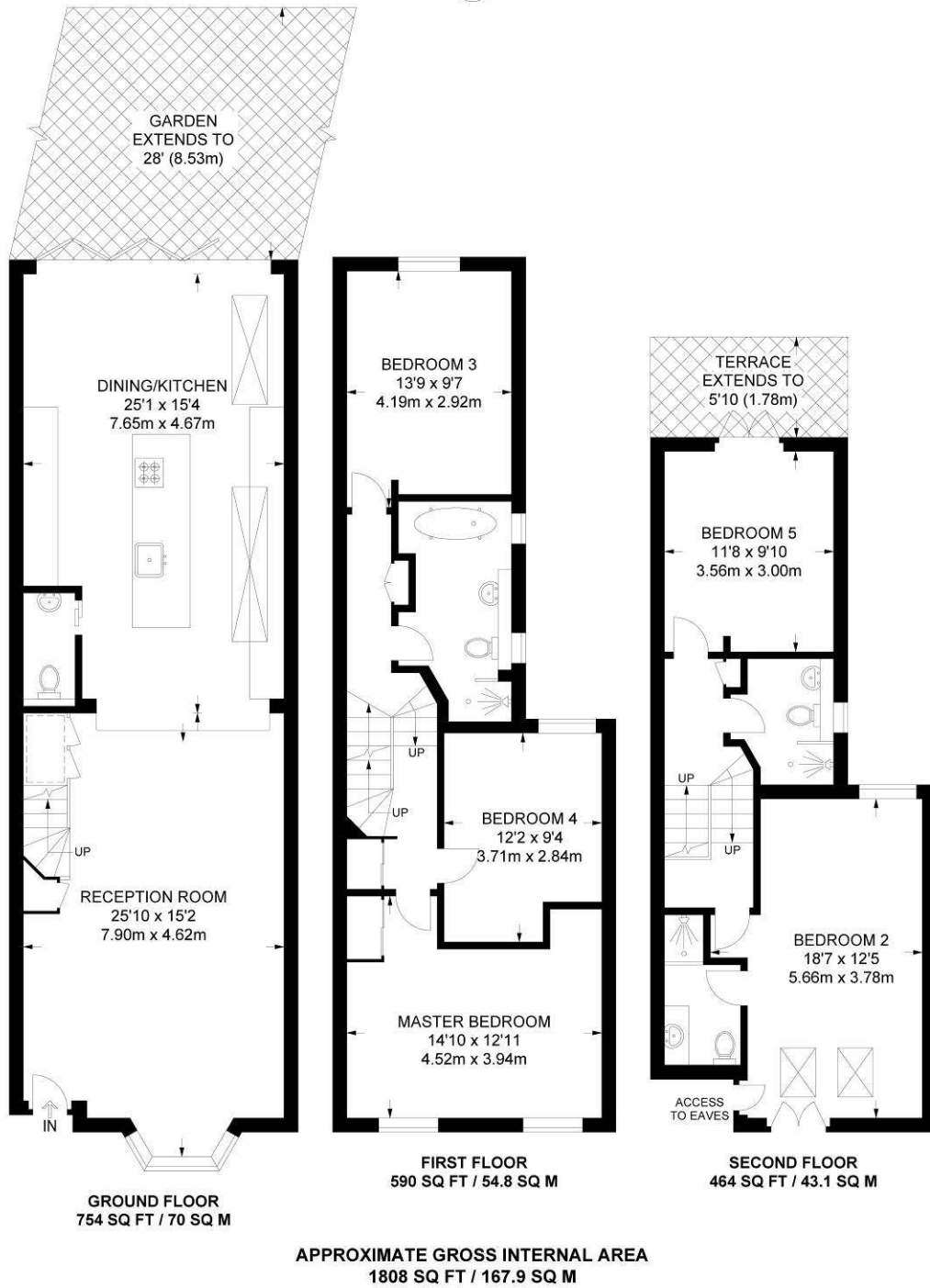
## AT A GLANCE

- Five Bedrooms
- Victorian Terraced House
- Rebuilt to Modern Standards
- Reception Room
- Modern Kitchen-Diner
- Two Bathrooms & Ensuite with Underfloor Heating
- Downstairs Cloakroom
- Garden
- Private Terrace

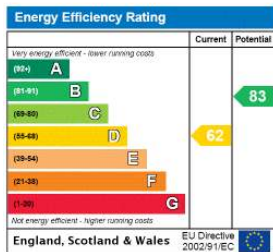








This floorplan is for illustration purposes only and is not to scale. The position and size of doors, windows, appliances and other features are approximate.



Dulwich | 020 8299 2722 | dulwich@winkworth.co.uk



winkworth.co.uk

See things differently

Winkworth wishes to inform prospective buyers and tenants that these particulars are a guide and act as information only. All our details are given in good faith and believed to be correct at the time of printing but they don't form part of an offer or contract. No Winkworth employee has authority to make or give any representation or warranty in relation to this property. All fixtures and fittings, whether fitted or not are deemed removable by the vendor unless stated otherwise and room sizes are measured between internal wall surfaces, including furnishings.