



131A Pinehurst Road
West Moors, Ferndown, BH22 0AN
GUIDE PRICE £665,000

Winkworth



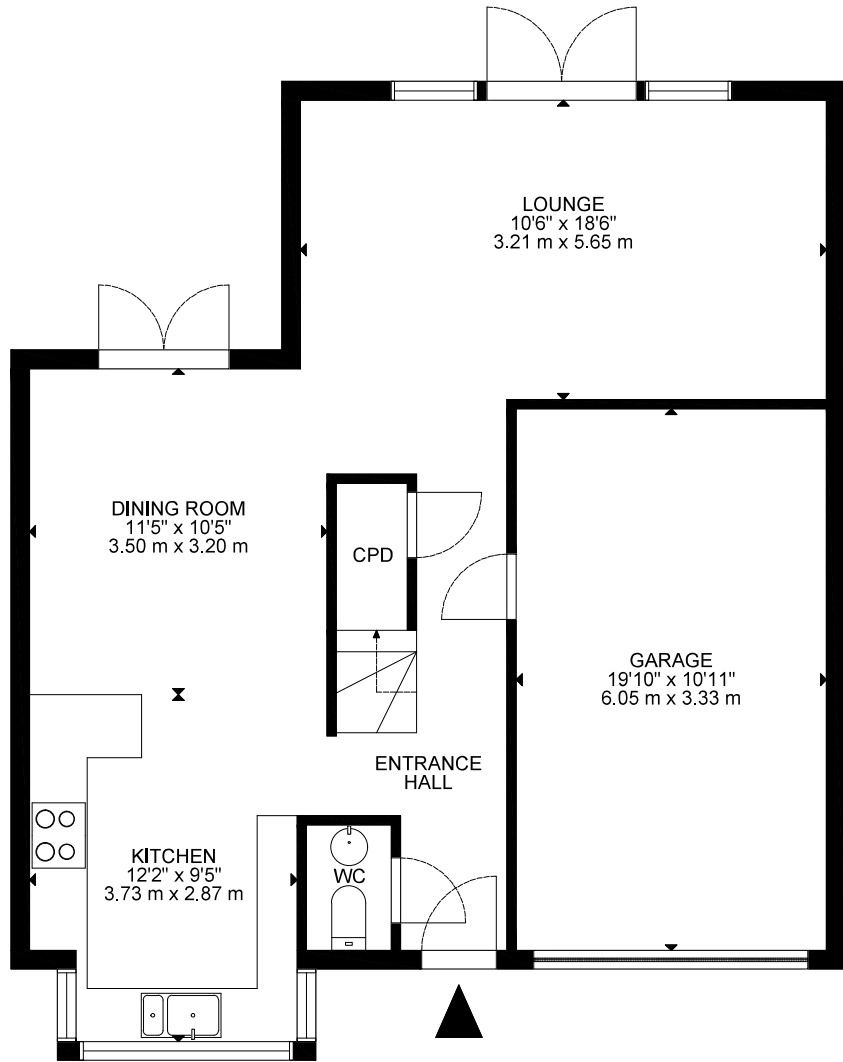
GUIDE PRICE £665,000
FREEHOLD

Brand new three bedroom two bathroom, detached house built by highly regarded local developer Harrison Property Group, set within a small, private and quiet development of just three houses. Positioned on a lovely plot and further benefiting from an integral garage, solar panels and no onward chain.

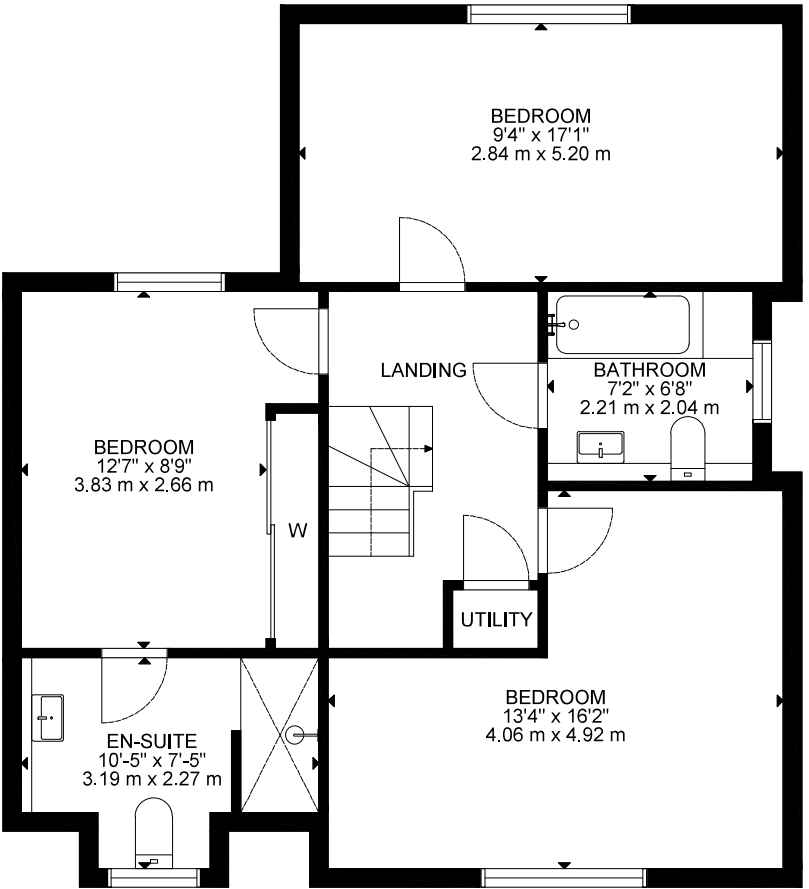
Detached New Home
10 Year NHBC Warranty
Three Double Bedrooms
Two Bathrooms
Secluded Plot
No Onward Chain
Integral Garage
Underfloor Heating
Solar Panels
Close To Local Amenities
EPC TBC Council Tax Band E

01202 434365
ferndown@winkworth.co.uk





GROUND FLOOR



FIRST FLOOR

GROSS INTERNAL AREA
 FLOOR 1: 556 SQ FT, 52 m2, FLOOR 2: 692 SQ FT, 64 m2
 GARAGE: 204 SQ FT, 19m2
 TOTAL: 1248 SQ FT, 116m2
 SIZE AND DIMENSIONS ARE APPROXIMATE, ACTUAL MAY VARY



LOCATION

A peaceful location yet only moments from the A31 which provides quick access to the New Forest, Southampton and beyond for the commuter by car. Award winning beaches are just twenty minutes away and there are bus routes within a short walk giving you easy access to Bournemouth, Poole & Wimborne all of which have an excellent range of shops, bars, restaurants and leisure facilities. The property is conveniently located within walking distance of both the village centre and the West Moors plantation with its lovely walks and cycle paths as well as access to the Castleman Trailway.

Winkworth Ferndown

406 Ringwood Road, Ferndown, Dorset, BH22 9AU

01202 434365 | ferndown@winkworth.co.uk

winkworth.co.uk/ferndown

Winkworth