



GLOUCESTER TERRACE, BAYSWATER, W2
£1,495,000 SHARE OF FREEHOLD

WITH OVER 1,400 FT OF LATERAL SPACE, A WELL-PROPORTIONED RAISED GROUND FLOOR THREE BEDROOM, TWO BATHROOM GRADE 11 MID C19 APARTMENT WITH AN ATTRACTIVE PART CHANNELLED STUCCO ELEVATION.

Paddington | 020 7467 5770 | paddington@winkworth.co.uk

Winkworth

for every step...

winkworth.co.uk



DESCRIPTION:

With over 1,400 ft² of lateral space, part high ceilings, share of freehold and accessed via its own front door through projecting Doric porches. A well-proportioned raised ground floor three bedroom, two bathroom Grade II Mid C19 apartment with an attractive part channelled stucco elevation. This spacious apartment is a development opportunity, perfect for a first time developer or an end user looking to create their perfect home. Gloucester Terrace is a popular and attractive Victorian thoroughfare ideally positioned and only a short distance from Paddington Station, Hyde Park and with the boutique shops and restaurants of Westbourne Grove.

SERVICE CHARGE: ABOUT £3,000 P.A | GROUND RENT: NIL | COUNCIL TAX: G | SHARE OF FREEHOLD



Winkworth

for every step...



Winkworth

for every step...

154 Gloucester Terrace

Approximate Gross Internal Area = 138.3 sq m / 1488 sq ft
(Including Mezzanine)

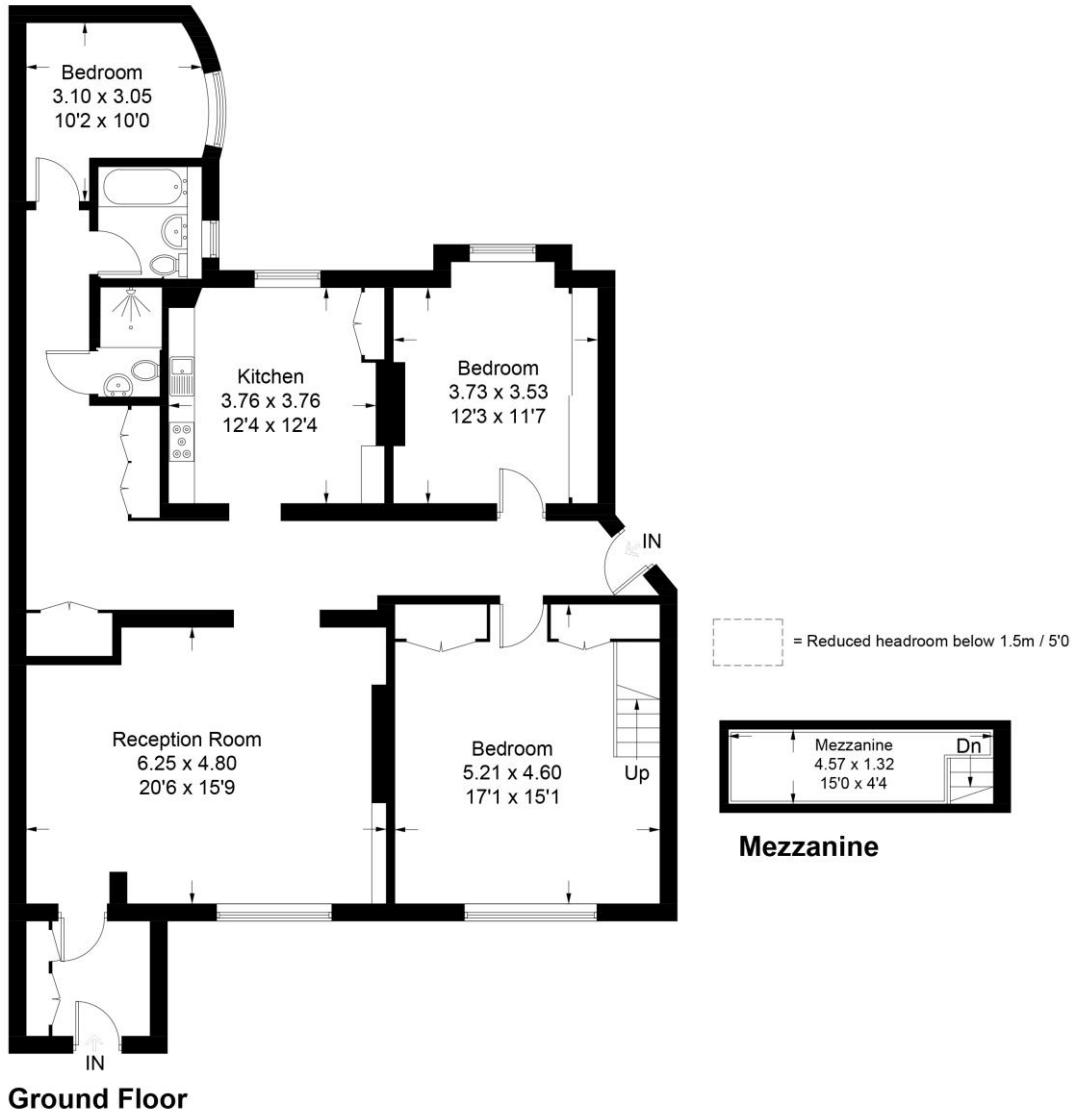


Illustration for identification purposes only, measurements are approximate,
not to scale. floorplansUsketch.com © (ID906318)

This floorplan is for illustration purposes only and is not to scale. The position and size of doors, windows, appliances and other features are approximate.

Paddington | 020 7467 5770 | paddington@winkworth.co.uk

Winkworth

for every step...

winkworth.co.uk

Winkworth wishes to inform prospective buyers and tenants that these particulars are a guide and act as information only. All our details are given in good faith and believed to be correct at the time of printing but they don't form part of an offer or contract. No Winkworth employee has authority to make or give any representation or warranty in relation to this property. All fixtures and fittings, whether fitted or not are deemed removable by the vendor unless stated otherwise and room sizes are measured between internal wall surfaces, including furnishings.