



**THE COTTAGE, EAST CHISENBURY, WILTSHIRE, SN9**  
**£1,850 PER MONTH**

## A GLORIOUS OUTLOOK AND A LOVELY HOUSE

Devizes | 01380 729 777 | [devizes@winkworth.co.uk](mailto:devizes@winkworth.co.uk)

Tenant Fees Apply: Details of fees for tenant referencing, tenancy agreement admin fees and renewal fees are available on the Winkworth website and the link can be found with the displayed rent for the property. Tenants should ensure they are fully conversant with these upfront fees and other costs that are involved at the outset of the tenancy before making an offer to rent and your local Winkworth office will provide written details upon request.

[winkworth.co.uk](http://winkworth.co.uk)

**Winkworth**

for every step...



## DESCRIPTION:

A lovely, five bed home sitting by the River Avon with far reaching views and good, flexible accommodation. Available to rent for 2-3 years. Pets considered. Accommodation comprises five bedrooms, two bathrooms (one with shower over bath), entrance hall, sitting room, drawing room, kitchen/dining room with breakfast room overlooking terrace and gardens, utility room and downstairs WC. On street parking. Heating is oil fired, mains water and electricity, private drainage.

The property is available to rent for 2-3 years.

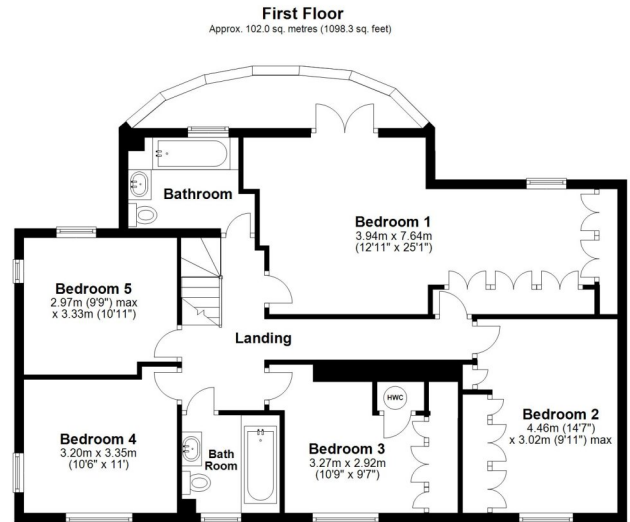
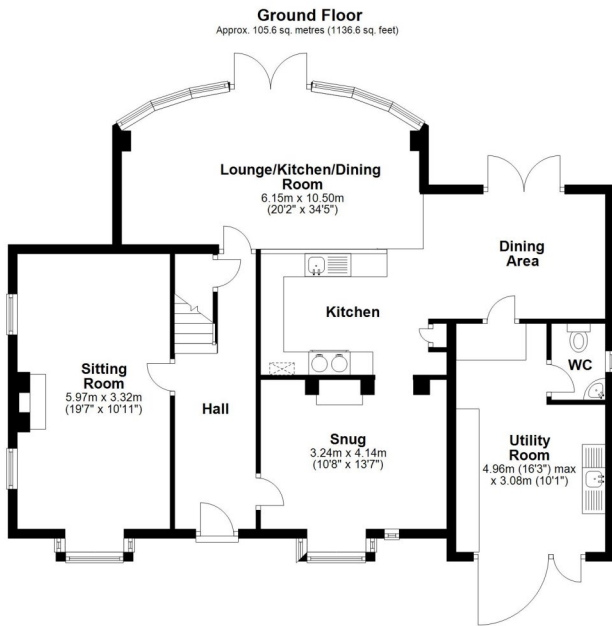
**Winkworth**

for every step...



**Winkworth**

for every step...



Total area: approx. 207.6 sq. metres (2235.0 sq. feet)

This floorplan is for illustration purposes only and is not to scale. The position and size of doors, windows, appliances and other features are approximate.

Energy Efficiency Rating	
	Potential
Very energy efficient - lower running costs	
(92+) <b>A</b>	
(81-91) <b>B</b>	
(69-80) <b>C</b>	75
(55-68) <b>D</b>	
(39-54) <b>E</b>	44
(21-38) <b>F</b>	
(1-20) <b>G</b>	
Not energy efficient - higher running costs	
England, Scotland & Wales	EU Directive 2002/91/EC



Devizes | 01380 729 777 | devizes@winkworth.co.uk

for every step...

winkworth.co.uk

Winkworth wishes to inform prospective buyers and tenants that these particulars are a guide and act as information only. All our details are given in good faith and believed to be correct at the time of printing but they don't form part of an offer or contract. No Winkworth employee has authority to make or give any representation or warranty in relation to this property. All fixtures and fittings, whether fitted or not are deemed removable by the vendor unless stated otherwise and room sizes are measured between internal wall surfaces, including furnishings.