



WARBECK ROAD, LONDON, W12

£1,950,000 FREEHOLD

A STYLISH AND BEAUTIFULLY PRESENTED SIX BEDROOM VICTORIAN TOWNHOUSE ARRANGED OVER FIVE FLOORS ON THIS SOUGHT-AFTER STREET

Shepherds Bush | 020 8735 3266 | shepherdsbush@winkworth.co.uk

A member of  OnTheMarket.com

[winkworth.co.uk/shepherds-bush](https://www.winkworth.co.uk/shepherds-bush)

Winkworth

for every step...



DESCRIPTION:

A stylish and beautifully presented Five/Six-bedroom Victorian townhouse arranged over five floors on this sought-after street. This outstanding family home juxtaposes a modern decor with many period details in a most pleasing and harmonious way. The reception space is awash in natural light and manages to be both grand and homely. The accommodation comprises a double reception room, a modern kitchen dining room that has been extended into the side return using a striking "glass box" design, five or six double bedrooms depending on your preference of use, four bathrooms (two en suite) and a pretty rear garden. The basement has been converted to provide a nanny annex comprising a double bedroom, kitchen and bathroom. In addition, there is a climate-controlled wine cellar and the property has also been extended into the loft space currently used as a spacious office/study or where the sixth bedroom could be positioned.

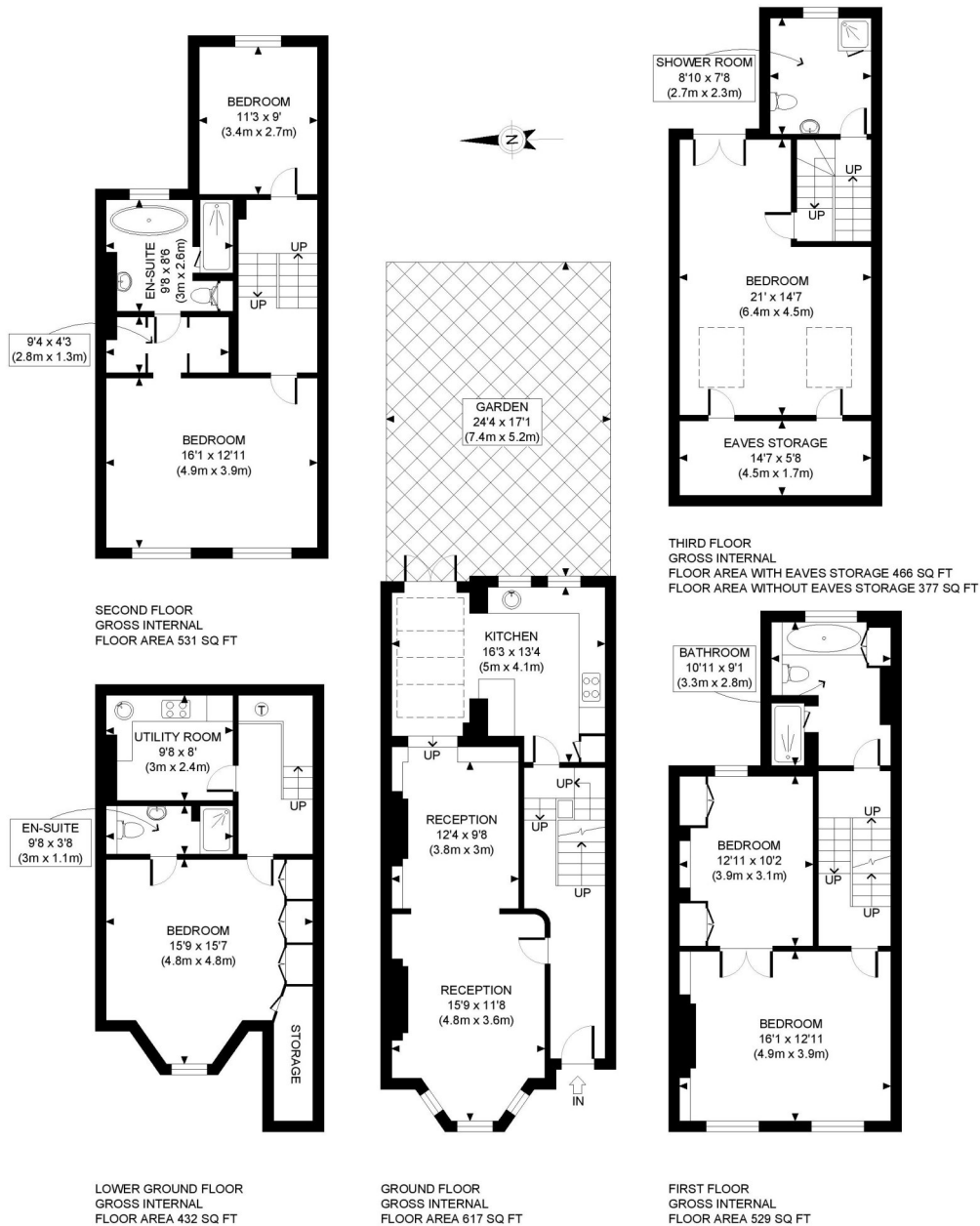
This is an elegant and welcoming family home with masses of flexible living space. A fine home such as this will be very well received indeed.

LOCATION:

Warbeck road is one the most sought-after roads in Shepherds Bush, running south of the Uxbridge and in close proximity to all the transport links and amenities offered in and around Shepherds Bush green including Westfield London.



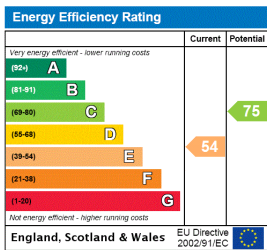




APPROX. GROSS INTERNAL FLOOR AREA WITH EAVES STORAGE: 2575 SQ FT/ 239 SQM
 APPROX. GROSS INTERNAL FLOOR AREA WITHOUT EAVES STORAGE: 2486 SQ FT/ 231 SQM

PROPERTY PHOT PLANS.co.uk
 ONE STOP SHOP FOR PROPERTY MARKETING

Whilst every attempt has been made to ensure the accuracy of the floor plan contained here, measurements of the doors, windows, rooms and any other items are approximate and no responsibility is taken for any errors, omissions, or miss-statement. This plan is for illustrative purposes only and should be used as such by any prospective client. The services, systems and appliances shown have not been tested and no guarantee as to the operability or efficiency can be given.



Shepherds Bush | 020 8735 3266 | shepherdsbush@winkworth.co.uk



winkworth.co.uk/shepherds-bush

for every step...