



ALLERTON ROAD, HERTFORDSHIRE, WD6  
**£625,000 FREEHOLD**

**A WELL PRESENTED FOUR BEDROOM, TWO  
RECEPTION END OF TERRACE "T" HOUSE.**

**Borehamwood | 020 8953 8899 | borehamwood@winkworth.co.uk**



## DESCRIPTION:

Offering in excess of 1000 square feet of bright and well-proportioned living space is this rarely available Four bedroom, Two reception end of terrace "T" House.

Well-presented throughout, the accommodation is complimented by Southerly facing rear and side gardens and off street parking to the front for several cars

Located on the North side of Borehamwood the property is within easy access of Several "Good" Ofsted rated schools and offers substantial scope to extend, subject to the usual planning consents.

## AT A GLANCE

- 4 Bedrooms
- Two Receptions
- Guest Cloakroom
- Southerly Side and Rear Gardens
- Off Street Parking
- Scope To Extend (Stpp)
- 1021 Square Feet
- Fitted Wardrobes





Winkworth



Winkworth



Winkworth



Winkworth



Winkworth

Approximate Gross Internal Area = 94.8 sq m / 1021 sq ft

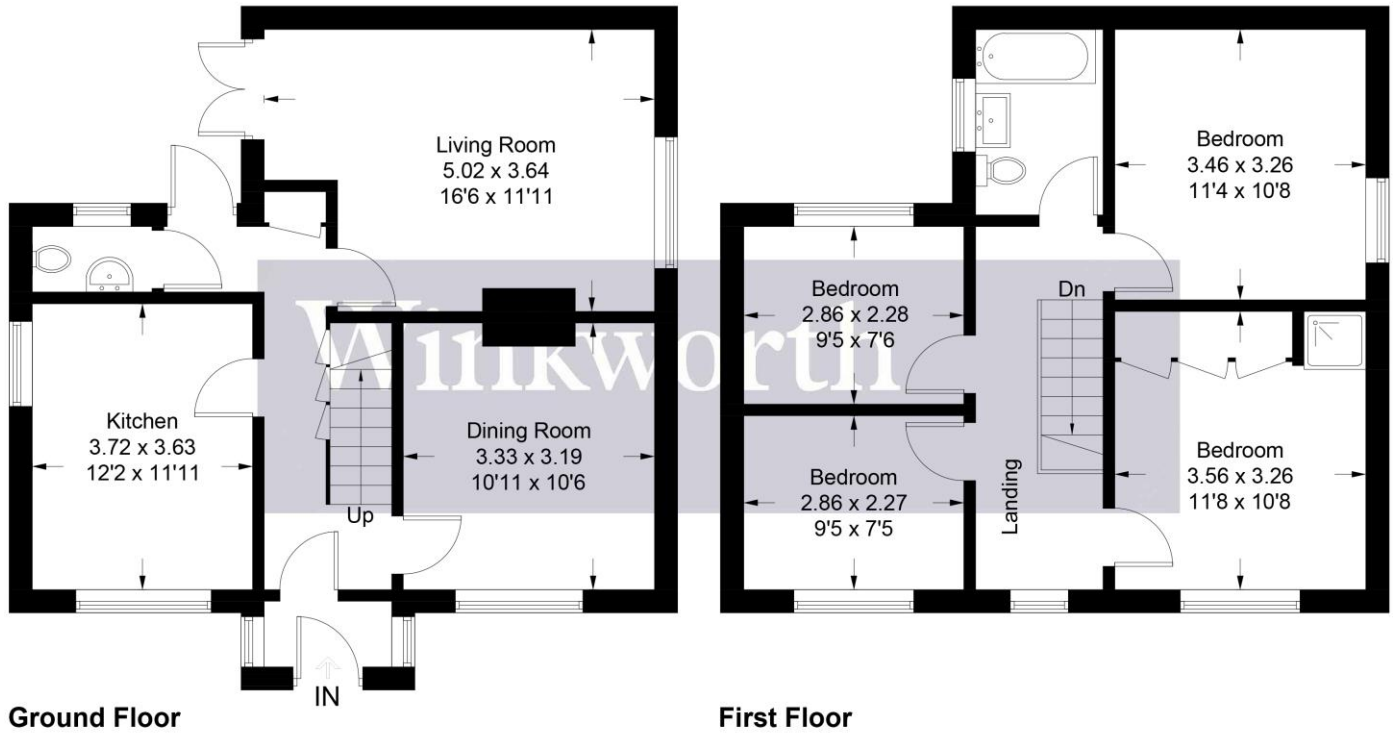


Illustration for identification purposes only, measurements are approximate, not to scale. Winkworth © 2022 (ID897586)

This floorplan is for illustration purposes only and is not to scale. The position and size of doors, windows, appliances and other features are approximate.

