



MUSEUM STREET, LONDON, WC1A £1,175,000 LEASEHOLD

A TWO BEDROOM TWO BATHROOM APARTMENT IN GOOD ORDER OF NEARLY 900 SQUARE FEET ON THE FIRST FLOOR OF A SMALL MODERN DEVELOPMENT SET IN A PRIME BLOOMSBURY LOCATION.

Leasehold: 115 years remaining
Camden Band G £2987.03 PA
Service Charge: Share of outgoings
Ground Rent: £400 PA

West End | 020 7240 3322 | westend@winkworth.co.uk

Winkworth

for every step...

winkworth.co.uk



DESCRIPTION:

Configuration: Entrance hallway, master bedroom with en suite shower room, family bathroom, second bedroom, reception looking down onto Museum Street. Museum Street is traffic restricted and runs between Bloomsbury Way and Great Russell Street in the heart of The Museum Quarter and so is perfectly and quietly positioned for access to The British Museum, Oxford Street, UCL, SOAS, LSE, The Legal Quarter as well as the exciting and full range of retail, dining and entertainment options of London's West End. The nearest Underground stations are Tottenham Court Road (Crossrail) Russell Square and Holborn



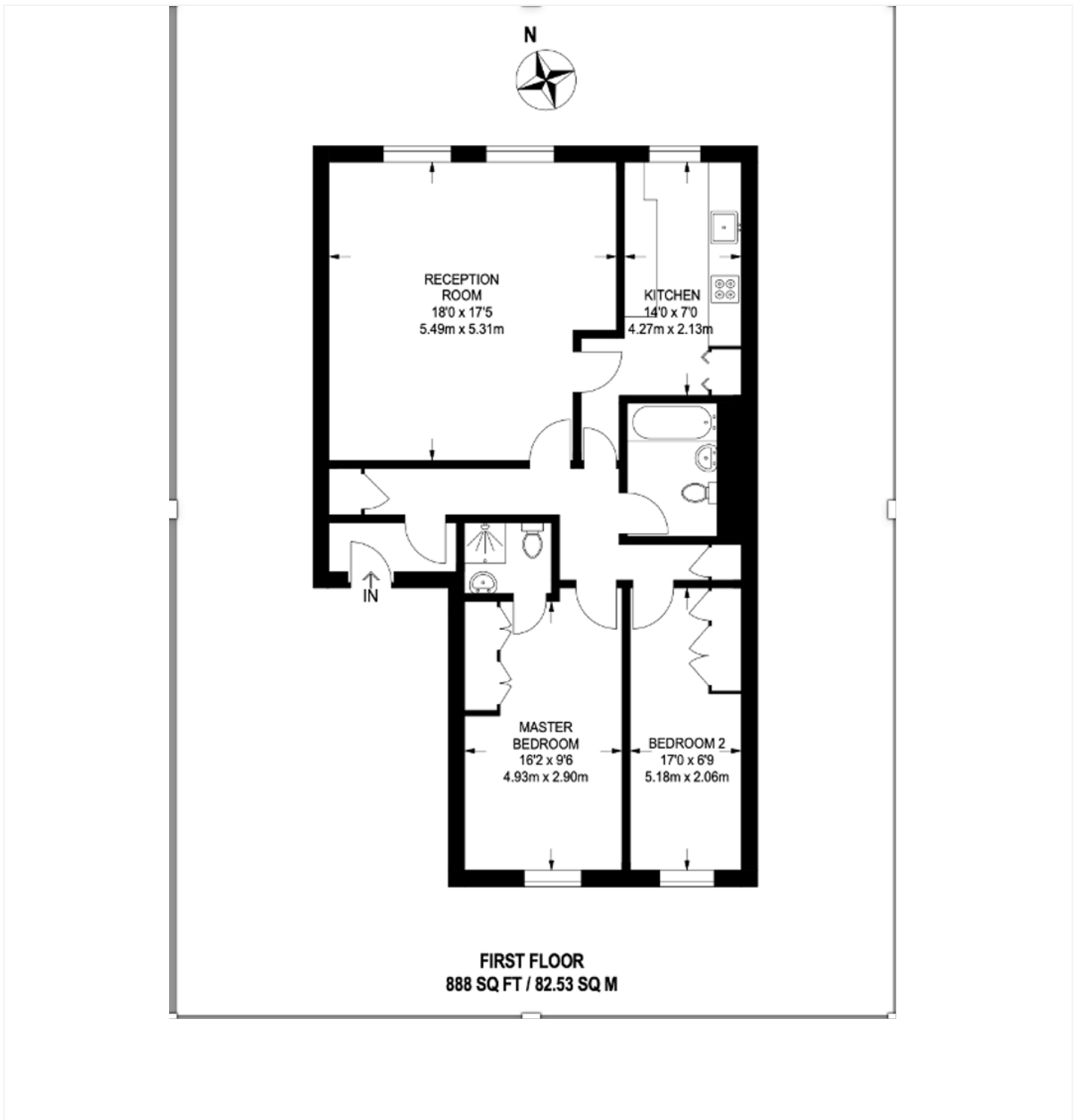
Winkworth

for every step...



Winkworth

for every step...



This floorplan is for illustration purposes only and is not to scale. The position and size of doors, windows, appliances and other features are approximate.

Energy Efficiency Rating	
	Potential
Very energy efficient - lower running costs	
(92+) A	
(81-91) B	
(69-80) C	76
(55-68) D	71
(39-54) E	
(21-38) F	
(1-20) G	
Not energy efficient - higher running costs	
England, Scotland & Wales	EU Directive 2002/91/EC



West End | 020 7240 3322 | westend@winkworth.co.uk

for every step...

winkworth.co.uk

Winkworth wishes to inform prospective buyers and tenants that these particulars are a guide and act as information only. All our details are given in good faith and believed to be correct at the time of printing but they don't form part of an offer or contract. No Winkworth employee has authority to make or give any representation or warranty in relation to this property. All fixtures and fittings, whether fitted or not are deemed removable by the vendor unless stated otherwise and room sizes are measured between internal wall surfaces, including furnishings.