



SQUIRES LANE, FINCHLEY, LONDON, N3
OIEO £400,000

2 BEDROOM GROUND FLOOR FLAT WITH PRIVATE GARDEN

Kingsbury | 020 8204 0000 | kingsbury@winkworth.co.uk



for every step...

winkworth.co.uk



DESCRIPTION:

Winkworth are pleased to introduce to the market this well maintained 2 bedroom ground floor flat. The property comprises of a bright and ample reception room, two sizeable bedrooms, one bathroom, a simplistic kitchen, and a private garden. The property is situated in a convenient location, a short walk from Finchley Central Station (Northern Line) 0.7 miles away and the array of shops, eateries and amenities Finchley Central has to offer. A variety of reputable schools are available nearby such as Manorside Primary which virtually sits on the doorstep. This will make an ideal purchase for a small family, or for a buy to let investor. An internal viewing is recommended.



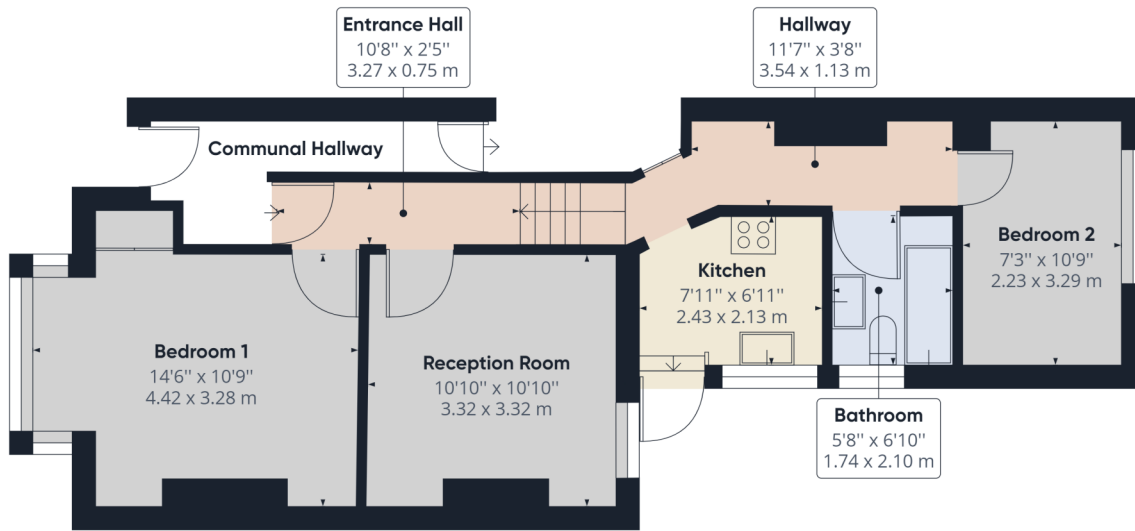
Winkworth

for every step...



Winkworth

for every step...



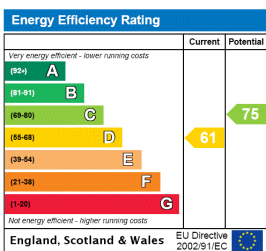
Approximate total area⁽¹⁾
527.37 ft²
48.99 m²

(1) Excluding balconies and terraces

While every attempt has been made to ensure accuracy, all measurements are approximate, not to scale. This floor plan is for illustrative purposes only.

GIRAFFE360

This floorplan is for illustration purposes only and is not to scale. The position and size of doors, windows, appliances and other features are approximate.



Kingsbury | 020 8204 0000 | kingsbury@winkworth.co.uk



for every step...

winkworth.co.uk

Winkworth wishes to inform prospective buyers and tenants that these particulars are a guide and act as information only. All our details are given in good faith and believed to be correct at the time of printing but they don't form part of an offer or contract. No Winkworth employee has authority to make or give any representation or warranty in relation to this property. All fixtures and fittings, whether fitted or not are deemed removable by the vendor unless stated otherwise and room sizes are measured between internal wall surfaces, including furnishings.