



DUFOURS PLACE, LONDON, W1F
£650,000 LEASEHOLD

**A LARGE STUDIO FLAT ON THE FIFTH FLOOR WITH
LIFT ACCESS, IN THE HEART OF SOHO.**

Leasehold 87 years remaining.
Service charge 1781.75 p/a.
Ground rent 293 p/a.
Council tax band E - payable 1058 p/a.

West End | 020 7240 3322 | westend@winkworth.co.uk

Winkworth

for every step...

winkworth.co.uk



DESCRIPTION:

The property is very quiet, has very good light and is in good order.

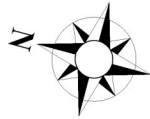
Dufour's Place leads off of Broadwick Street and is at the centre of everything in Soho.

The flat is within walking distance to all theatres of the West End, Universities and Tube Stations with the Elizabeth Line being no more than a 15-minute walk away.

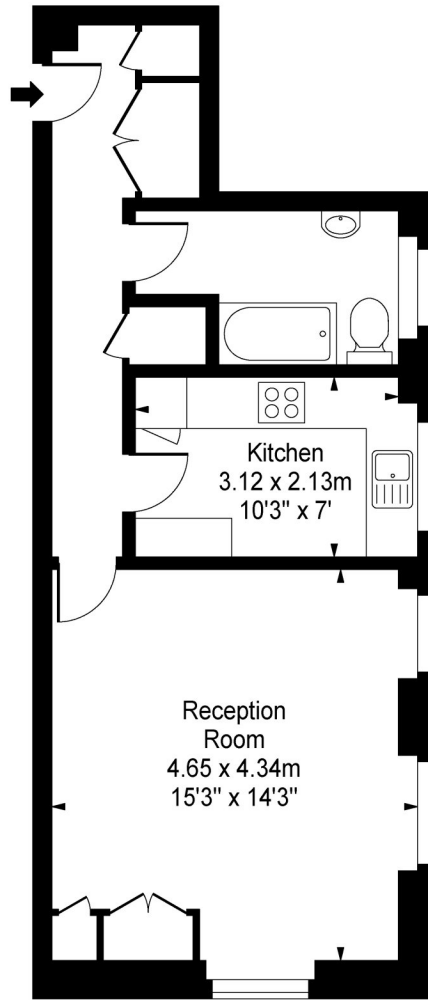
This apartment would make an ideal pied de terre and would suit a professional needing somewhere during the week to stay.







Dufours Place W1F



Fifth Floor

Approx Gross Internal Area

454 Sq Ft - 42.19 Sq M

Measured in accordance with RICS guidelines. Every attempt is made to ensure accuracy
However all measurements are approximate.
The floor plan is illustrative purposes only and is not to scale

This floorplan is for illustration purposes only and is not to scale. The position and size of doors, windows, appliances and other features are approximate.

Energy Efficiency Rating	
	Potential
Very energy efficient - lower running costs	
(92+) A	
(81-91) B	84
(69-80) C	
(55-68) D	65
(39-54) E	
(21-38) F	
(1-20) G	
Not energy efficient - higher running costs	
England, Scotland & Wales	EU Directive 2002/91/EC



West End | 020 7240 3322 | westend@winkworth.co.uk

for every step...

winkworth.co.uk

Winkworth wishes to inform prospective buyers and tenants that these particulars are a guide and act as information only. All our details are given in good faith and believed to be correct at the time of printing but they don't form part of an offer or contract. No Winkworth employee has authority to make or give any representation or warranty in relation to this property. All fixtures and fittings, whether fitted or not are deemed removable by the vendor unless stated otherwise and room sizes are measured between internal wall surfaces, including furnishings.