



RAINHAM ROAD, NW10

£5,500 PER MONTH PART FURNISHED, UNFURNISHED

**A SPECTACULAR THREE BEDROOM, THREE BATHROOM FAMILY HOME LOCATED IN THE HEART OF KENSAL RISE.**

Kensal & Queens Park | 0208 960 4947 | [kensalrise@winkworth.co.uk](mailto:kensalrise@winkworth.co.uk)

**Winkworth**

for every step...

[winkworth.co.uk](http://winkworth.co.uk)





## DESCRIPTION:

This family home is set over four floors and comprises of a large double aspect reception room with high ceilings and period features. This flows to an extended open-plan kitchen reception room with a stunning kitchen fitted with all modern appliances and a breakfast bar. Also there are bi-folding doors leading to a private south facing patio garden.

The first floor comprises of a rear double bedroom with fitted wardrobes, family bathroom with both a roll top bath and walk in shower. The primary bedroom which also has its own en-suite with bath and shower is spacious and large by design.

The top floor offered a bright bedroom with Juliette balcony as well as a further en-suite bathroom.

Additional features include but not limited to a separate w/c on the ground floor, alarm system, wooden flooring throughout and has been meticulously decorated in pastel tones.

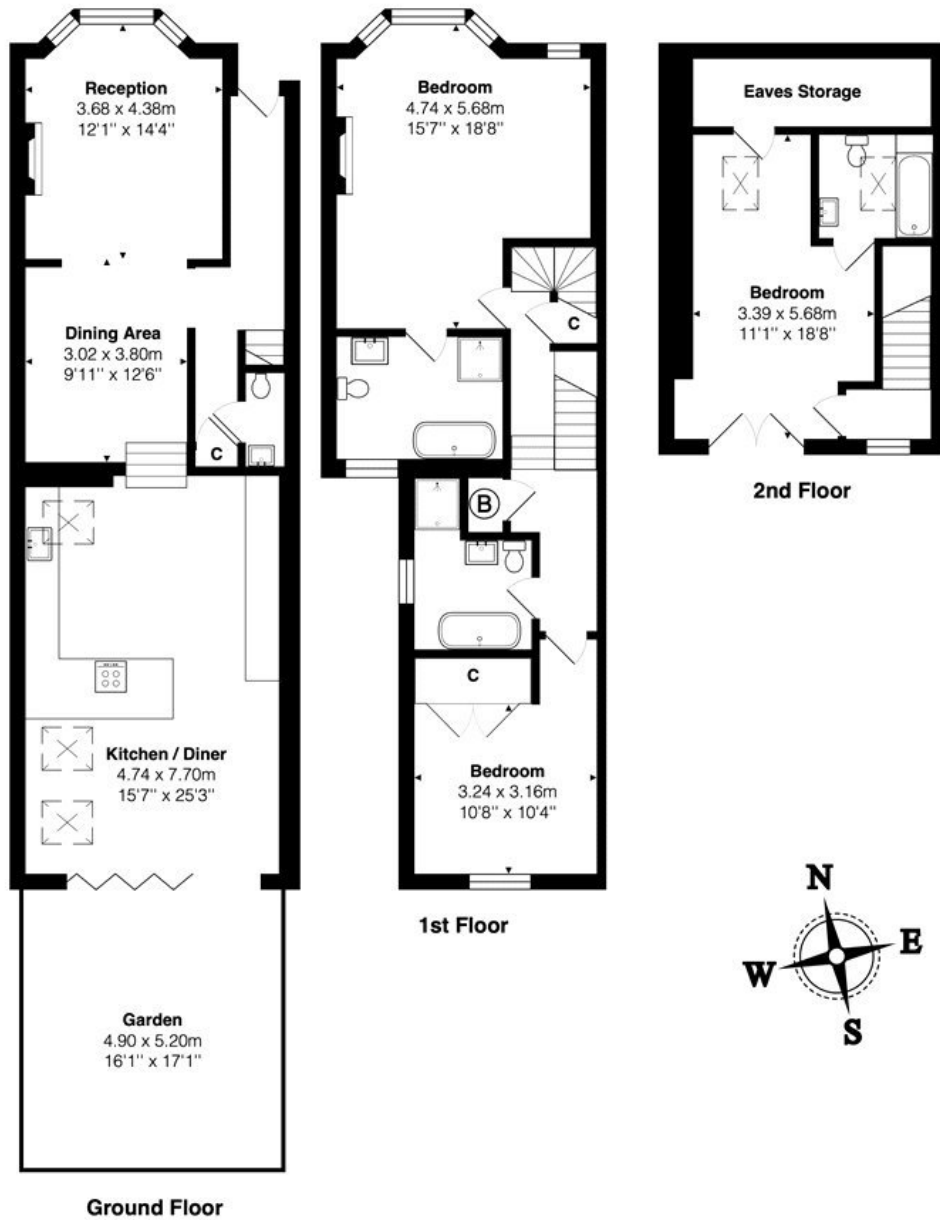
## AT A GLANCE

- Family Home
- Three Double Bedrooms
- Primary Bedroom With En-suite
- Three Bathrooms (including two en-suites)
- Open Plan Living
- Spacious Eat-In Kitchen Diner
- Private Garden









Total Area: 162.9 m<sup>2</sup> ... 1754 ft<sup>2</sup> (excluding garden, eaves storage)  
 All measurements are approximate and for display purposes only

This floorplan is for illustration purposes only and is not to scale. The position and size of doors, windows, appliances and other features are approximate.

Kensal & Queens Park | 0208 960 4947 | kensalrise@winkworth.co.uk



for every step...

winkworth.co.uk

winkworth wishes to inform prospective buyers and tenants that these particulars are a guide and act as information only. All our details are given in good faith and believed to be correct at the time of printing but they don't form part of an offer or contract. No Winkworth employee has authority to make or give any representation or warranty in relation to this property. All fixtures and fittings, whether fitted or not are deemed removable by the vendor unless stated otherwise and room sizes are measured between internal wall surfaces, including furnishings.