



5 Penrose Road Ferndown
BH22 9JF
OFFERS OVER £650,000





**OFFERS OVER £650,000
FREEHOLD**

Stunning four/five bedroom, two bathroom detached bungalow with versatile accommodation and a south facing garden with hot tub. Positioned in a very sought after cul-de-sac, less than a five minute walk from the amenities along Ferndown high street.

Properties of this quality in this location are rarely available!

Detached Bungalow
Stunning Interior
Approx 500m From High Street
Fabulous Main Bedroom With En-suite & Dressing Area
Off Road Parking For Several Vehicles
Two Bathrooms
South Facing Garden With Hot Tub
Kitchen/Diner
Four/Five Bedrooms
Large Workshop With Light & Power

EPC TBC | Council Tax Band D

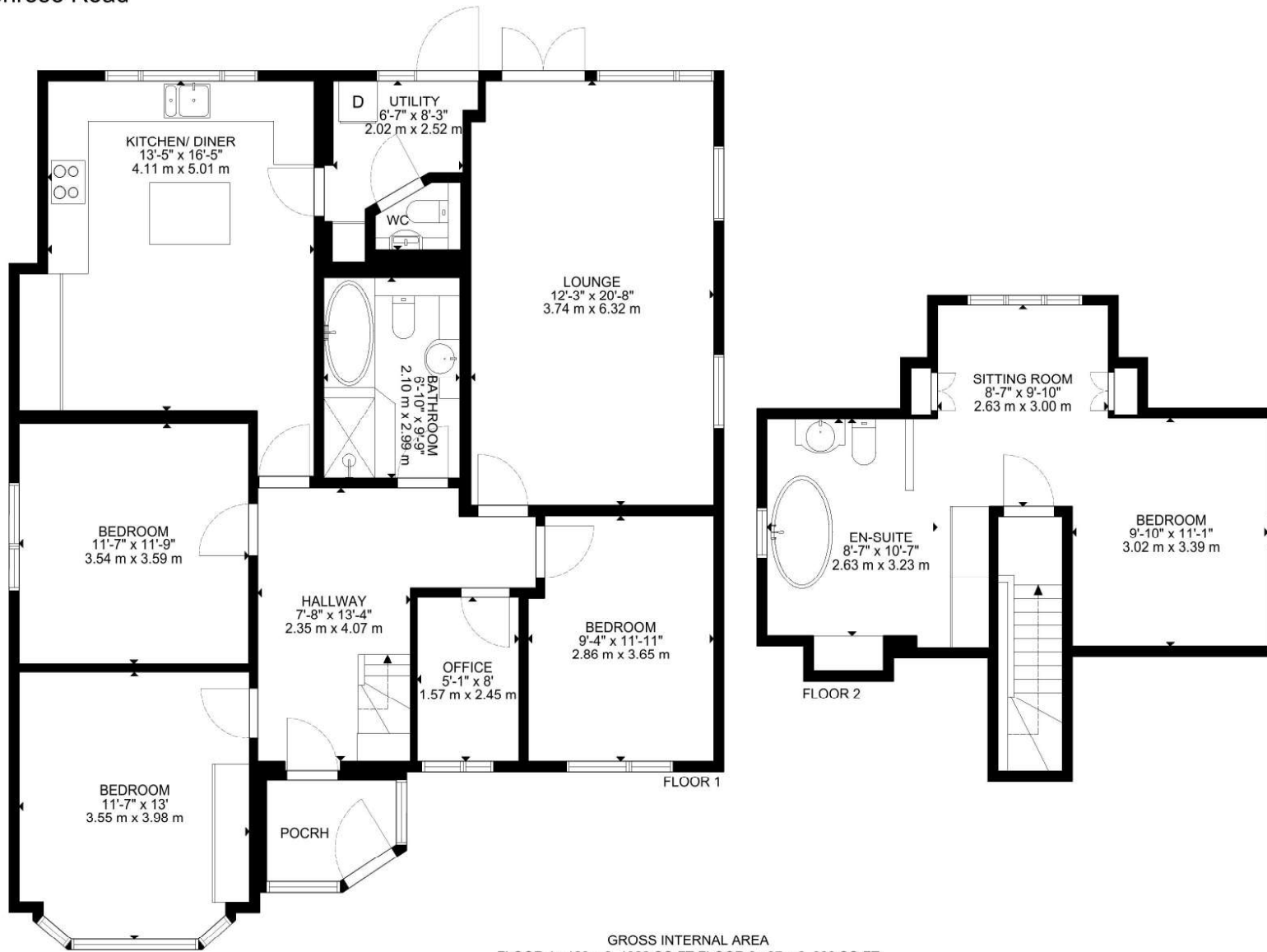
01202 434365

ferndown@winkworth.co.uk





5 Penrose Road



GROSS INTERNAL AREA
FLOOR 1 : 123 m2, 1323 SQ FT FLOOR 2 : 37 m2, 398 SQ FT
TOTAL: 160 m2, 1721 SQ FT
SIZE AND DIMENSIONS ARE APPROXIMATE, ACTUAL MAY VARY



LOCATION

Less than a five minute walk from Ferndown town centre, which has a range of shops, cafes and amenities including an M&S Food hall and a championship golf course. There are bus routes within a short walk giving you easy access to Bournemouth, Poole & Wimborne all of which have an excellent range of shops, bars, restaurants and leisure facilities. Award winning sandy beaches are just twenty minutes away in Bournemouth and the nearby A31 provides quick access to the New Forest, Southampton and London.

Winkworth Ferndown

406 Ringwood Road, Ferndown, Dorset, BH22 9AU

01202 434365 | ferndown@winkworth.co.uk

winkworth.co.uk/ferndown

Winkworth