



HANBURY CLOSE, LONDON, NW4  
**£670,000 LEASEHOLD**

SET WITHIN A GATED AND POPULAR DEVELOPMENT IN THE HEART OF HENDON IS THIS TWO BEDROOM APARTMENT MEASURING 1082 SQ FT OF LIVING SPACE.

Hendon | 020 8202 1031 | [hendon@winkworth.co.uk](mailto:hendon@winkworth.co.uk)

**Winkworth**

for every step...

[winkworth.co.uk](http://winkworth.co.uk)



### DESCRIPTION:

Set within a gated and popular development in the heart of Hendon is this two bedroom apartment measuring 1082 Sq ft of living space. This second-floor apartment comprises master bedroom with fitted storage and en-suite bathroom suite, second well sized bedroom, separate fully fitted kitchen, family bathroom and a spacious living room with access out to balcony. Further benefits include, residents parking, entry-phone and gas central heating. Leasehold. Chain free.

EPC: C

### AT A GLANCE

- TWO DOUBLE BEDROOMS
- GATED DEVELOPMENT
- OFF STREET PARKING
- SPACIOUS LIVING SPACE OF 1182 Sq Ft
- LONG LEASEHOLD
- LARGE SEPARATE FULLY FITTED KITCHEN





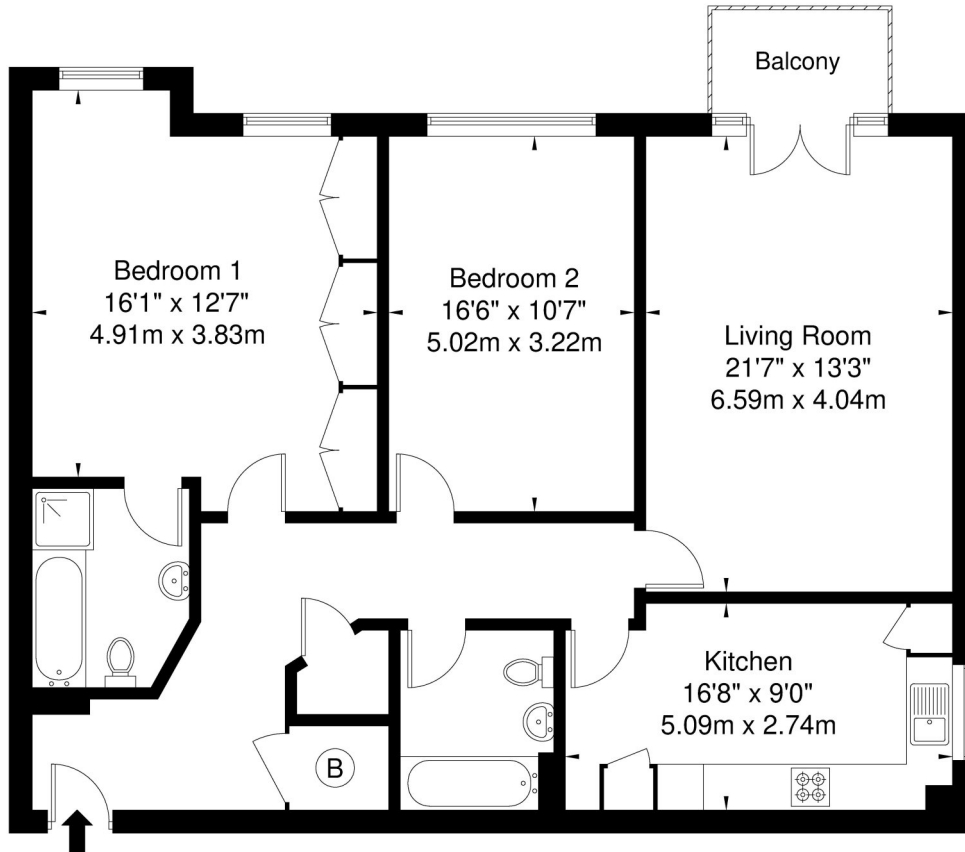
Winkworth



Winkworth

# Haddon Court, Hanbury Close, NW4 1QQ

Approx. Gross Internal Area = 111.5 sq m / 1200 sq ft



Second Floor

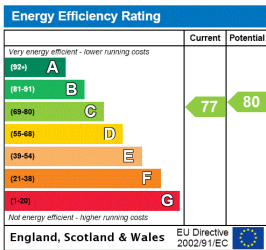
Ref

Copyright

**BLEU  
PLAN**

The Floor plan is not to scale and measurements and areas shown are approximate and therefore should be used for illustrative purposes only. The plan has been prepared in accordance with the RICS code of Measuring Practice and whilst we have confidence in the information produced it must not be relied on. If there is any aspect of particular importance, you should carry out or commission your own inspection of the property.

This floorplan is for illustration purposes only and is not to scale. The position and size of doors, windows, appliances and other features are approximate.



Hendon | 020 8202 1031 | hendon@winkworth.co.uk

for every step...

winkworth.co.uk

Winkworth wishes to inform prospective buyers and tenants that these particulars are a guide and act as information only. All our details are given in good faith and believed to be correct at the time of printing but they don't form part of an offer or contract. No Winkworth employee has authority to make or give any representation or warranty in relation to this property. All fixtures and fittings, whether fitted or not are deemed removable by the vendor unless stated otherwise and room sizes are measured between internal wall surfaces, including furnishings.