

PRINCIPAL PLACE, LONDON, EC2A
£1,313,100 LEASEHOLD

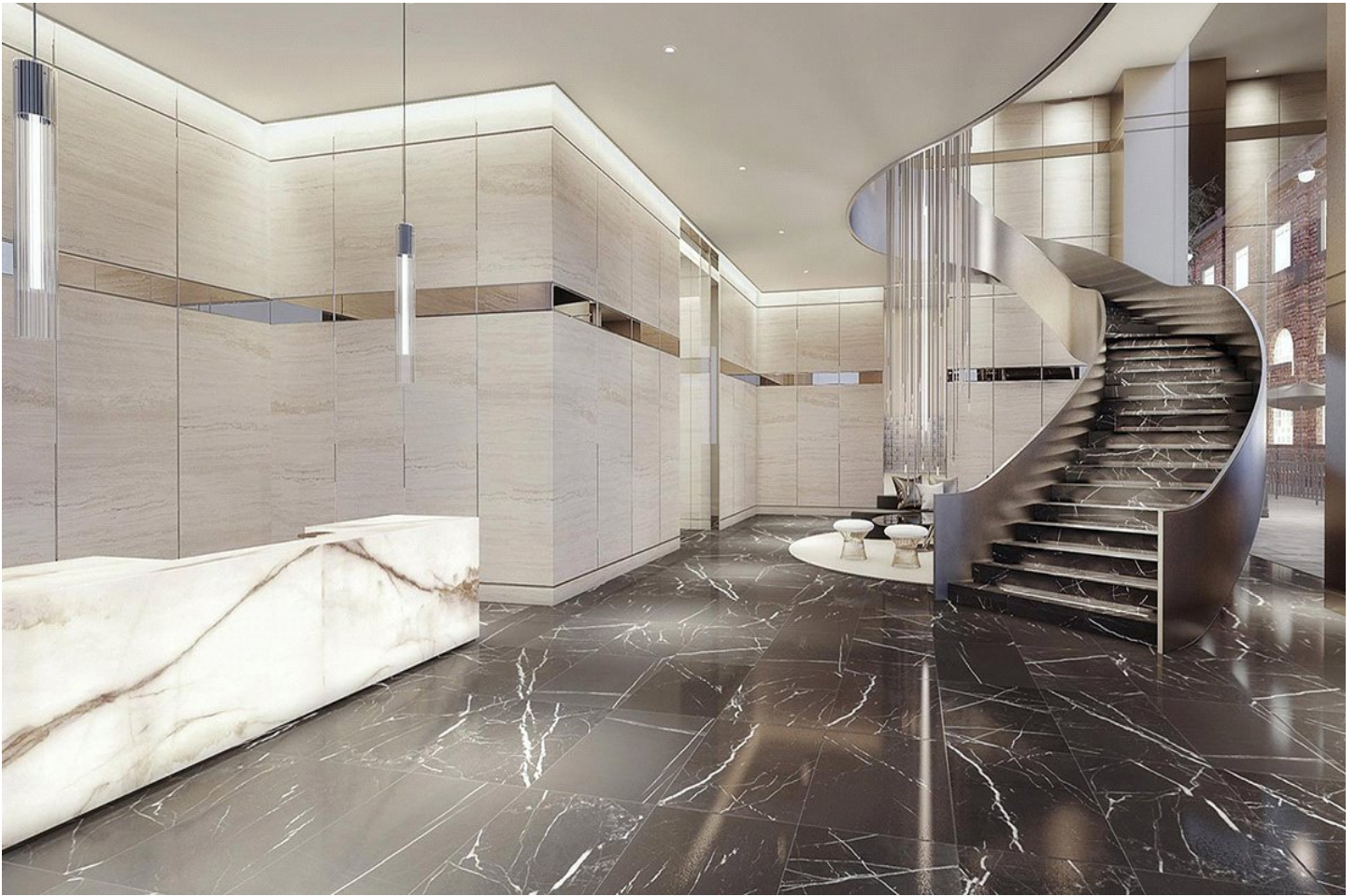
A FANTASTIC ONE-BEDROOM APARTMENT AVAILABLE ON THE 29TH FLOOR

Shoreditch | 020 7749 7650 | shoreditch@winkworth.co.uk

Winkworth

winkworth.co.uk

See things differently



DESCRIPTION:

A fantastic one-bedroom apartment available on the 29th floor measuring 518 sq ft of this brand-new development designed by Foster + Partners. The property features private balcony, open-plan kitchen/living room, Oak herringbone flooring throughout (except bathroom) and Underfloor heating. The kitchen is fully fitted including Miele oven and combination microwave oven, Siemens dishwasher, Stainless steel undermounted sink and monobloc mixer tap, Wood veneered kitchen doors and Luxury contemporary kitchen featuring white composite stone worktops. The bathroom features marble throughout, Dornbracht mixers, taps and shower fittings, Underfloor heating and heated towel radiator.

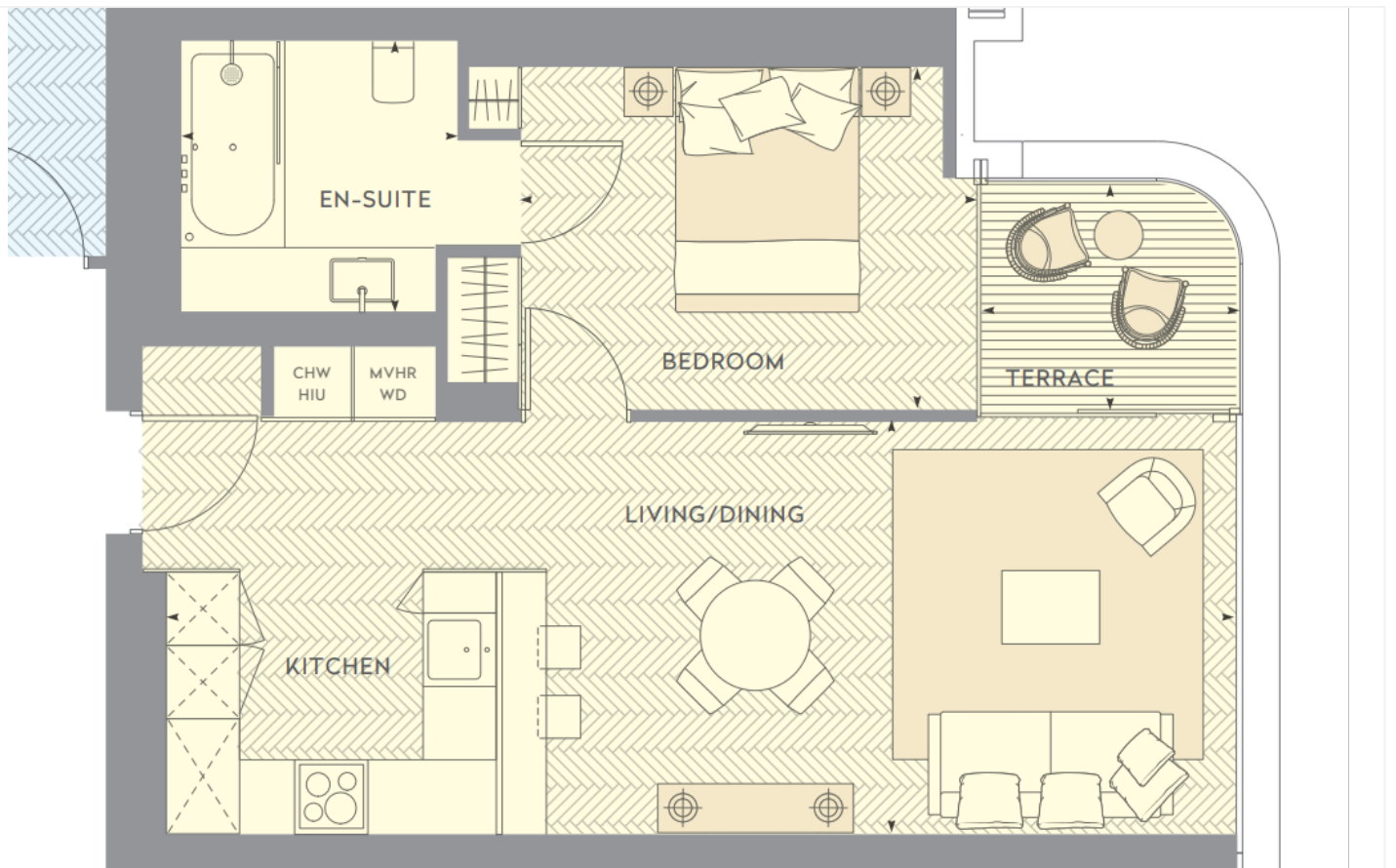
As well as spectacular views across London, the property features luxury amenities including swimming pool with adjacent jacuzzi, fully equipped residents' gym on the first floor, steam room and sauna, residents' lounge/bar, residents' screening room, 24-hour concierge service with CCTV, secure lift access and temperature-controlled storage facility for deliveries on ground floor.

Principle Tower is ideally placed and offers a vast array of local amenities on your doorstep with Commercial Street, Spitalfields Market, Brick Lane and Shoreditch High Street all within a short walk. You have a wealth of boutique shops, art galleries, pop ups, cafes, restaurants and bars to choose from as well as numerous transport links with Liverpool Street, Aldgate and Aldgate East Stations Close by.

Winkworth



Winkworth



This floorplan is for illustration purposes only and is not to scale. The position and size of doors, windows, appliances and other features are approximate.

Shoreditch | 020 7749 7650 | shoreditch@winkworth.co.uk

Winkworth

winkworth.co.uk

See things differently

Winkworth wishes to inform prospective buyers and tenants that these particulars are a guide and act as information only. All our details are given in good faith and believed to be correct at the time of printing but they don't form part of an offer or contract. No Winkworth employee has authority to make or give any representation or warranty in relation to this property. All fixtures and fittings, whether fitted or not are deemed removable by the vendor unless stated otherwise and room sizes are measured between internal wall surfaces, including furnishings.