



## OXBERRY AVENUE, SW6 £600 PER WEEK

Offering exceptional space, this incredible, split-level two double bedroom flat is located in the heart of Fulham on the highly sought after Oxberry Avenue.

Fulham & Parsons Green | 020 7731 3388 | [fulham@winkworth.co.uk](mailto:fulham@winkworth.co.uk)

**Winkworth**

for every step...

[winkworth.co.uk](http://winkworth.co.uk)



Located on the second and third floors of this impressive mid terrace town house, this light and bright flat has more than 850 sq. ft of living space.

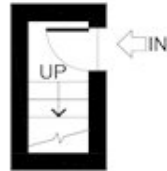
The two good size, well-proportioned double bedrooms both have built in wardrobes and are conveniently separated by the recently redesigned complimenting bathroom.

On the top floor you will be greeted by a large light and bright, open plan kitchen/reception room, with a high ceiling and large dual aspect windows and clear views across to Bishops Park and Central London. Double doors lead on to South-West facing roof terrace looking directly over into Bishops Park.

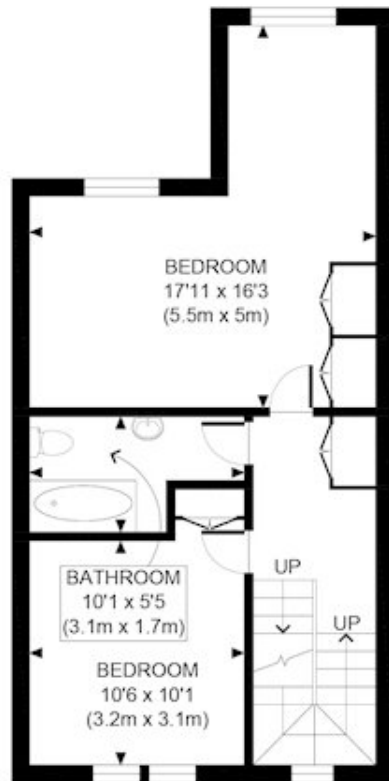
Oxberry Avenue is perfectly located for quick and easy access to the wide and open spaces of Bishops Park and Fulham Palace. Putney Bridge Tube Station is within a few minutes' walk, along with the numerous bus links. The boutique shops, bars and restaurants found on nearby Fulham Road and Parsons Green are moments away.







FIRST FLOOR  
GROSS INTERNAL  
FLOOR AREA 17 SQ FT



SECOND FLOOR  
GROSS INTERNAL  
FLOOR AREA 489 SQ FT



THIRD FLOOR  
GROSS INTERNAL  
FLOOR AREA 377 SQ FT

This floorplan is for illustration purposes only and is not to scale. The position and size of doors, windows, appliances and other features are approximate.

Fulham & Parsons Green | 020 7731 3388 | fulham@winkworth.co.uk

**Winkworth**

for every step...

*winkworth.co.uk*

Winkworth wishes to inform prospective buyers and tenants that these particulars are a guide and act as information only. All our details are given in good faith and believed to be correct at the time of printing but they don't form part of an offer or contract. No Winkworth employee has authority to make or give any representation or warranty in relation to this property. All fixtures and fittings, whether fitted or not are deemed removable by the vendor unless stated otherwise and room sizes are measured between internal wall surfaces, including furnishings.