



ADMIRALS TOWER, GREENWICH, LONDON, SE10
£900,000 LEASEHOLD

AN ABSOLUTELY STUNNING THREE BEDROOM , 7TH FLOOR, APARTMENT THAT FEATURES WONDERFUL RIVER VIEWS AND MEASURES CIRCA 873 SQUARE FOOT. THE PROPERTY ALSO FEATURE SECURE UNDERGROUND PARKING! EWS1 COMPLIANT!

Greenwich | 02030533033 | greenwich@winkworth.co.uk

Winkworth

winkworth.co.uk

See things differently



DESCRIPTION:

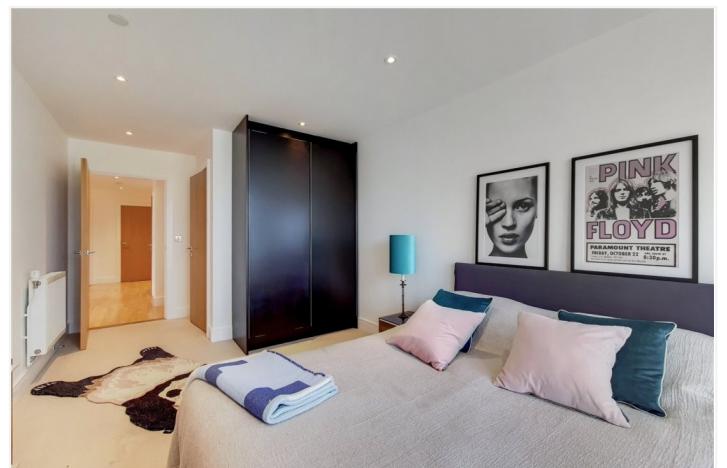
An absolutely stunning three bedroom , 7th floor, apartment that features wonderful river views and measures circa 873 square foot. The property also feature secure underground parking! EWS1 compliant!

The property is in wonderful order throughout and briefly comprises a 23ft kitchen/living room that in turn has access onto a large winter garden balcony, that spans the length of the flat. The flat is situated on the curve of the river which means the views are outstanding in all directions. There are three bedrooms and two high quality bathrooms. Added benefits include plenty of storage and a 24 hour concierge on site.

Admirals Tower is part of the hugely popular New Capital riverside development, perfectly located just to the west of Greenwich town centre and moments from a large Waitrose which is onsite. Mainline Rail, DLR and riverboat service are just moments away.

AT A GLANCE

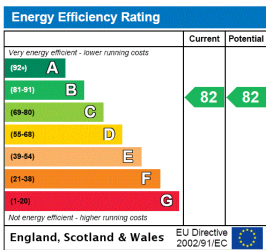
- outstanding apartment
- 7th floor with lift
- stunning river views
- three bedroom
- circa 873 square foot
- secure underground parking
- two bathrooms
- concierge on site
- large winter garden balcony
- west Greenwich location
- New Capital Quay development







This floorplan is for illustration purposes only and is not to scale. The position and size of doors, windows, appliances and other features are approximate.



Greenwich | 02030533033 | greenwich@winkworth.co.uk



winkworth.co.uk

See things differently

Winkworth wishes to inform prospective buyers and tenants that these particulars are a guide and act as information only. All our details are given in good faith and believed to be correct at the time of printing but they don't form part of an offer or contract. No Winkworth employee has authority to make or give any representation or warranty in relation to this property. All fixtures and fittings, whether fitted or not are deemed removable by the vendor unless stated otherwise and room sizes are measured between internal wall surfaces, including furnishings.