



APARTMENT B1, SHEPHERDESS WALK, LONDON, N1
£2,250,000 SHARE OF FREEHOLD

A TRULY SUBLIME, THREE BEDROOM WAREHOUSE CONVERSION WITH SENSATIONAL ROOF TERRACE IN ISLINGTON,

Highbury | 0207 989 7000 | highbury@winkworth.co.uk

Winkworth



DESCRIPTION:

This sensational three-bedroom penthouse apartment offers more than 2,200 sqft of lateral space alongside an outstanding private roof terrace. The property is one of only a handful of unique flats set within the sought-after Shepherdess Walk Building, a collection of bespoke apartments in a characterful Victorian warehouse conversion. One of only two penthouses accessed from the same lift, this flat is not only exclusive but utterly charming internally. A abundance of natural light from multiple windows throughout along with warehouse elements feature across the vast space, whilst the conversion has been carefully designed to capture the essence of industrial living. The centrepiece of the property is a grand social space incorporating huge living area and significant kitchen. The master suite is enhanced by solid wood flooring and original warehouse style doorframes, alongside ensuite shower room whilst a second large bedroom again benefits from ensuite. The property is completed with a further double bedroom with in-built storage, family sized bathroom and ample storage throughout.

The most spectacular private roof terrace can be accessed via an industrial spiral staircase with wrap round views of the city creating the perfect entertaining space.

The Shepherdess Walk buildings were originally used as a warehouse in Victorian times and the conversion to residential use created a striking collection of apartments which are internally distanced from the terraced surroundings. Set on a no through road, the property benefits from relatively peaceful surroundings whilst being set just moments from both Old Street and Angel. A huge selection of bars,

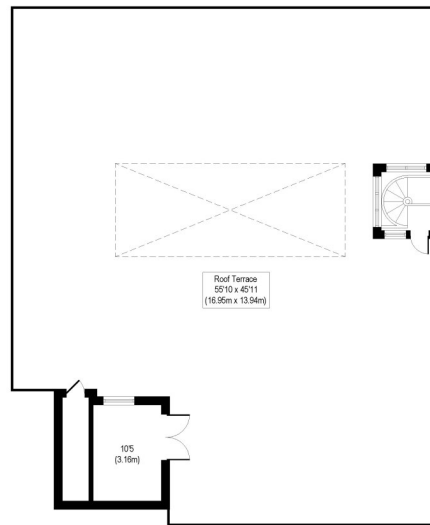
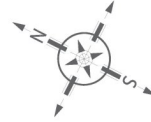
Winkworth



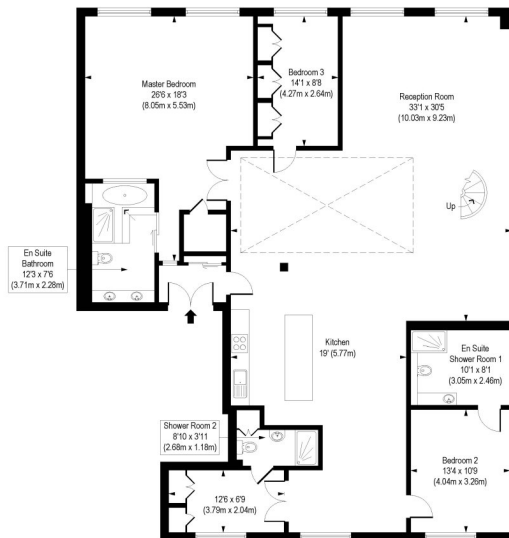
Winkworth

Shepherdess Walk, N1

Approx. Gross Internal Floor Area 2235 sq. ft / 207.65 sq. m



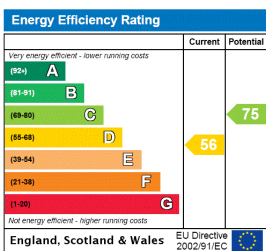
Fifth Floor
Gross Internal
Floor Area 33 sq ft



Fourth Floor
Gross Internal
Floor Area 2202 sq ft

COMPLIANT WITH RICS CODE OF MEASURING PRACTICE. Floorplan is for illustrative purposes only and is not to scale. Every attempt has been made to ensure the accuracy of the floorplan shown, however all measurements, fixtures, fittings and data shown are an approximate interpretation for illustrative purposes only. Liability for errors, omissions or mis-statement through negligence or otherwise is hereby excluded.

This floorplan is for illustration purposes only and is not to scale. The position and size of doors, windows, appliances and other features are approximate.



Highbury | 0207 989 7000 | highbury@winkworth.co.uk



winkworth.co.uk

See things differently

Winkworth wishes to inform prospective buyers and tenants that these particulars are a guide and act as information only. All our details are given in good faith and believed to be correct at the time of printing but they don't form part of an offer or contract. No Winkworth employee has authority to make or give any representation or warranty in relation to this property. All fixtures and fittings, whether fitted or not are deemed removable by the vendor unless stated otherwise and room sizes are measured between internal wall surfaces, including furnishings.