



Stonor Road, West Kensington, W14

£925,000 Leasehold

An unmodernised maisonette with private garden arranged over the lower and raised ground floors of a red brick Victorian terraced house.

Reception Room | Kitchen | 3 Bedrooms | En suite Shower Room | Cloakroom | Vault | Garden |
1211 Sq Ft / 113 Sq M | Council Tax band F | EPC Rating Band D

Winkworth



LOCATION

Stonor Road is ideally positioned for the numerous amenities on offer not only within the immediate area, but also those at Westfield London, Kensington High Street and Hammersmith. Various transport links are within close proximity with the nearest stations located at West Kensington, Barons Court and Kensington Olympia.

DESCRIPTION

Allowing the incoming purchaser the opportunity to extend and reconfigure, subject to the usual necessary consents, the property currently offers accommodation comprising entrance hall, two bedrooms and bathroom on the raised ground floor; the lower ground floor offers storage vault, reception room, bedroom, shower room and kitchen. The property further benefits from a balcony on the raised ground floor and private garden.

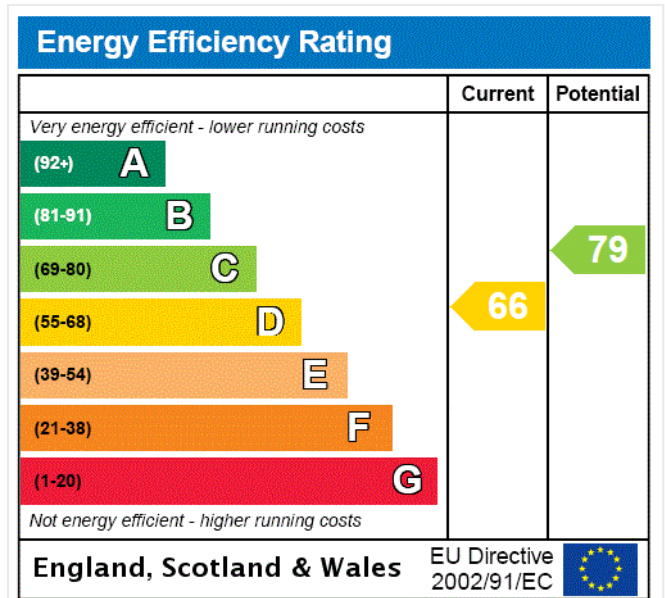


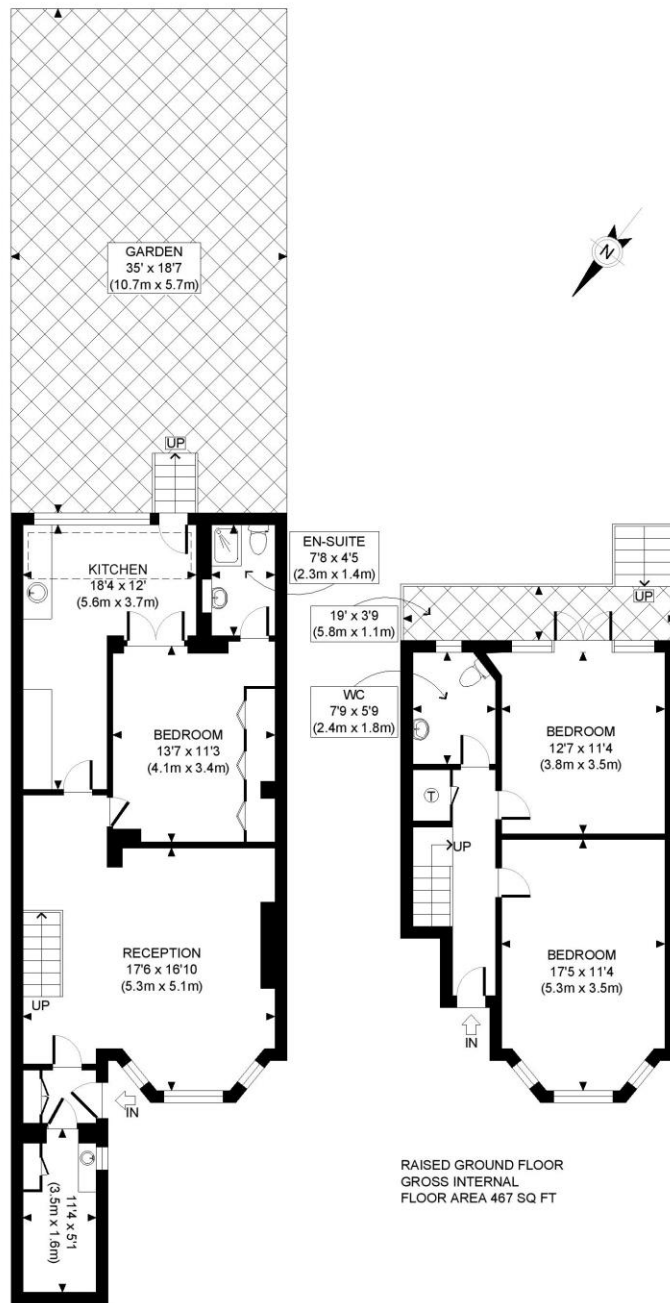


LOCAL AUTHORITY
Hammersmith and Fulham

TENURE
Leasehold.

PRICE: £925,000 Leasehold





LOWER GROUND FLOOR
GROSS INTERNAL
FLOOR AREA 744 SQ FT

APPROX. GROSS INTERNAL FLOOR AREA: 1211 SQ FT/ 113 SQM

PROPERTY PHOTO PLANS.CO.UK
ONE STOP SHOP FOR PROPERTY MARKETING

This plan is for illustrative purposes only and should be used as such by any prospective client. Whilst every attempt has been made to ensure the accuracy of the Floor Plan contained here, measurements of the doors, windows, rooms and any other items are approximate and no responsibility is taken for any errors, omissions, or misstatement. The services, systems and appliances shown have not been tested and no guarantee as to the operability or efficiency can be given.

The displayed square footage is taken from the floor plans with measurements created using the Royal Institute of Chartered Surveyors' Code of Practice for Measuring. These measurements are approximate and included for illustrative purposes only. Winkworth does not make any representation as to the accuracy of these measurements and you should seek to verify them for yourself. Winkworth accept no liability for any loss you may suffer if you rely on these measurements.

Hammersmith | 0207 371 4466 | hammersmith@winkworth.co.uk

Winkworth

for every step...

Under the Property Misdescriptions Act 1991, these Particulars are a guide and act as information only. All details are given in good faith and are believed to be correct at time of printing. Winkworth give no representation as to their accuracy and potential purchasers or tenants must satisfy themselves by inspection or otherwise as to their correctness. No employee of Winkworth has authority to make or give any representation or warranty in relation to this property.