



DUKE'S ROAD, LONDON, WC1H
£2,300,000 FREEHOLD

A CHARMING LATE GEORGIAN GRADE II LISTED END OF TERRACE FREEHOLD FAMILY HOUSE IN NORTH BLOOMSBURY.

Freehold
Council tax -£2,201 (Band G)

West End | 020 7240 3322 | westend@winkworth.co.uk

Winkworth

for every step...

winkworth.co.uk



DESCRIPTION:

The main accommodation is set on the ground and upper floors with a self-contained flat located on the lower floor. There is a large kitchen-diner and utility room on the ground floor and a comfortable reception with study on the first. The main rooms on the first and second floors are dual aspect and so receive good natural light. There are Three Bedrooms and Three Bathrooms which are all recently updated. The house has many period features and a pleasant period feel. Dukes Road has a Dickensian ambience. There are traffic limitations which limit through traffic. The location is good for Euston, Kings Cross, St Pancras and Eurostar. UCL, SOAS, UCH, The British Library are all well within walking distance as well as the Brunswick Centre and the Squares and open spaces of Bloomsbury.



Winkworth

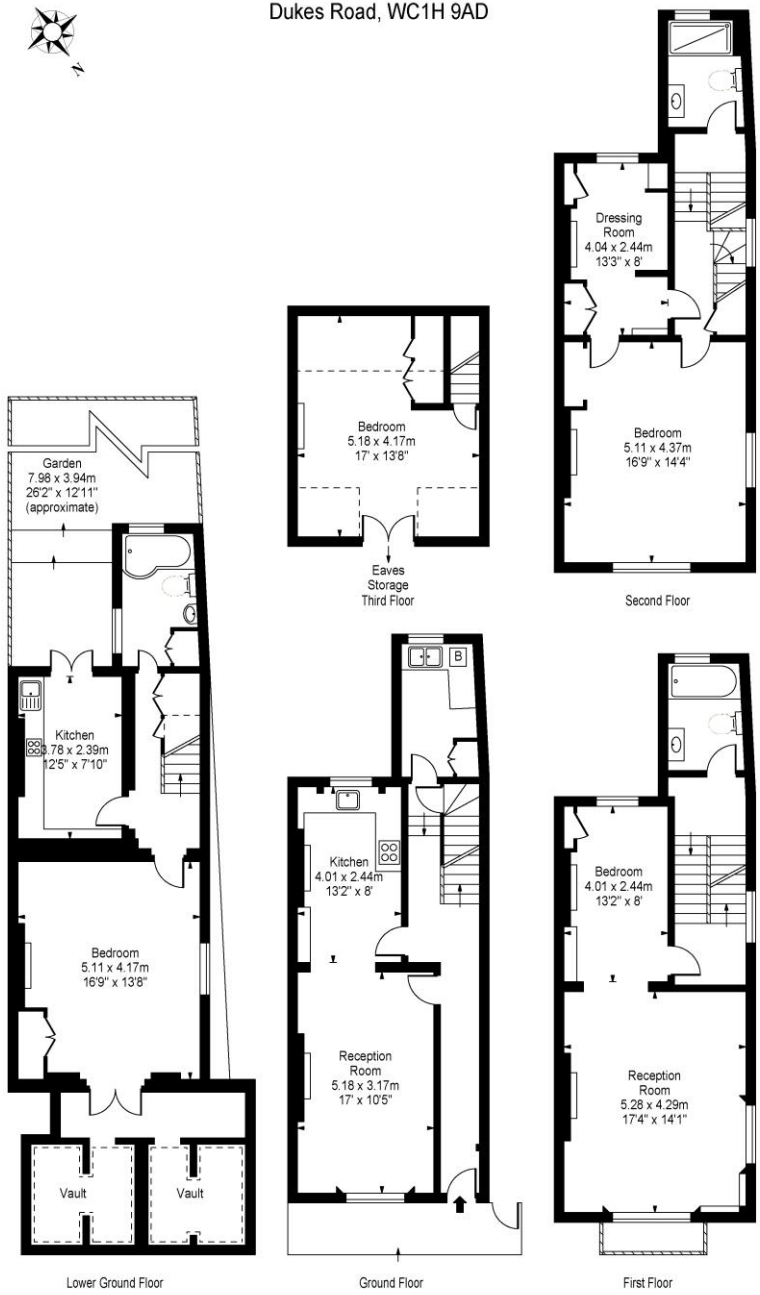
for every step...



Winkworth

for every step...

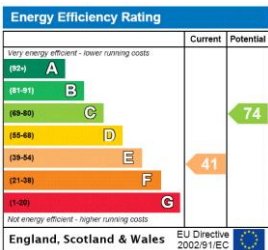
Dukes Road, WC1H 9AD



Approx Gross Internal Area 2360 Sq Ft - 219.24 Sq M

This floor plan should be used as a general outline for guidance only and does not constitute in whole or in part an offer or contract. Any intending purchaser or lessee should satisfy themselves by inspection, searches, enquiries and full survey as to the correctness of each statement. Any areas, measurements or distances quoted are approximate and should not be used to value a property or be the basis of any sale or let.

This floorplan is for illustration purposes only and is not to scale. The position and size of doors, windows, appliances and other features are approximate.



West End | 020 7240 3322 | westend@winkworth.co.uk



for every step...

winkworth.co.uk

Winkworth wishes to inform prospective buyers and tenants that these particulars are a guide and act as information only. All our details are given in good faith and believed to be correct at the time of printing but they don't form part of an offer or contract. No Winkworth employee has authority to make or give any representation or warranty in relation to this property. All fixtures and fittings, whether fitted or not are deemed removable by the vendor unless stated otherwise and room sizes are measured between internal wall surfaces, including furnishings.