



SOUTH DRIVE, LITTLETON, WINCHESTER, SO22 6PY



SOUTH DRIVE, LITTLETON, WINCHESTER, SO22 6PY



## WELL-PRESENTED BUNGALOW IN ENVIABLE SPOT ON SOUTH DRIVE

This attractive, cedar-clad bungalow enjoys a lovely position on South Drive in Littleton - a very popular private road in the heart of the village. With well-proportioned rooms internally, offering 1650 square feet of accommodation and a good-sized, mature and pretty garden, this intriguing property has much to offer. First impressions internally are excellent, with the spacious central hallway giving access to all of the principal accommodation. There is a pleasing separation between the reception spaces which are at one end of the bungalow, while the bedrooms are grouped together with the bathrooms at the other end. Solar panels on the garage provide much of the required electricity.

The centrally positioned hallway gives access through to an attractive kitchen/breakfast family room to one side which is nice and bright thanks to windows on two aspects. The kitchen itself offers plenty of base and eye level units and there is ample space for appliances such as a range style oven. A door leads through to a useful utility room with WC off and with door out to the side. The sitting/dining room is another spacious, welcoming room alongside the kitchen, again with windows on two sides ensuring plenty of natural light while glazed doors lead out to the garden at the side. There are four well-appointed bedrooms radiating from the hall, all of which are doubles and all of which have built in wardrobes. On the opposite side of the hall there are two separate bathrooms, both very smartly finished and one with both a bath and separate shower. There is also another shower room with WC positioned opposite the kitchen.

The attractive garden which wraps round the property is a lovely size with various areas to sit including a patio, and a large area of decking and with mature, well-stocked flower beds all around. There is an excellent studio with an internal storeroom and a covered veranda, positioned towards the bottom of the garden. The driveway to the front provides ample off-road parking and there is a detached double garage to one side.



## South Drive, Littleton, SO22 6PY

### Directions

From our office in Southgate Street, turn left up the High Street and go straight across the two mini roundabouts into Romsey Road; turn right into Clifton Terrace. Follow the road along to the bottom of St Paul's Hill and turn left onto Stockbridge Road. Follow Stockbridge Road straight over the two mini roundabouts and turn right into Main Road, signposted Littleton. After approximately 0.5 miles, take the slip road on the left, and turn left into South Drive. The property can be found towards the end of the road on the right-hand side.

### Situation

Littleton is one of Winchester's most popular villages and is located approximately one and a half miles from Winchester. The village benefits from a local restaurant (The Running Horse), bowling club, cricket club, croquet club, football team and tennis club. Winchester itself has a wider range of amenities including the mainline railway station (links to London Waterloo in approximately 55 minutes), high street shops, boutiques, library, coffee shops, public houses, restaurants, theatre, cinema, museums and of course the city's historic cathedral. Littleton falls within the catchment area for Sparsholt Primary School, The Westgate School and Henry Beaufort Secondary School.

### Tenure

Freehold

### Services

Mains gas, mains water, mains and solar-panel fed electricity  
Septic tank for waste

### Council tax band

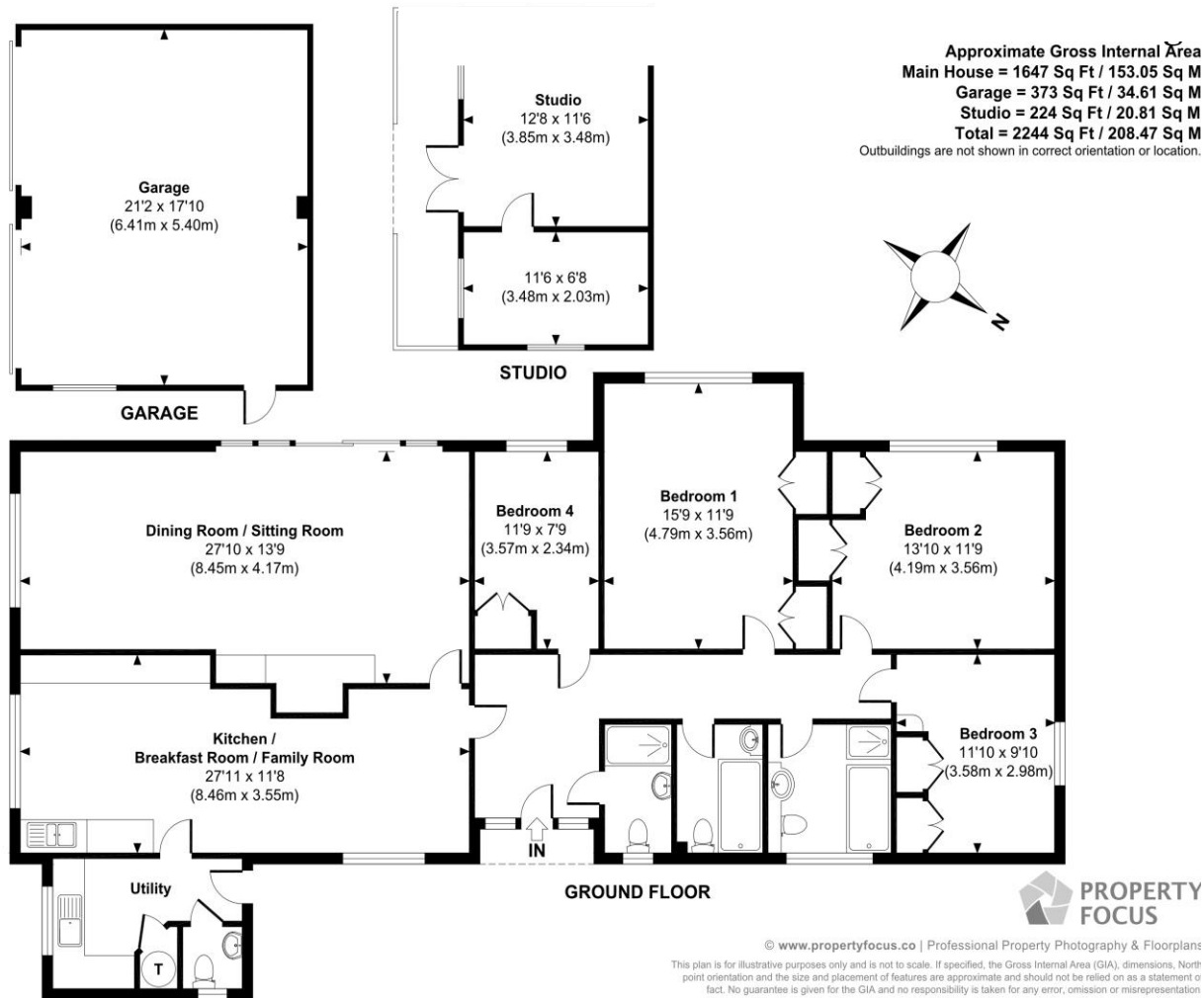
E – Winchester City Council

### EPC rating

C

### Viewing

Strictly by appointment with Winkworth Winchester Office



## Winkworth Winchester

2 Black Swan Buildings, Southgate Street, Winchester, SO23 9DT  
01962 866 777 | winchester@winkworth.co.uk

## Winkworth Country House Department

4<sup>th</sup> Floor, 1 Lumley Street, London, W1K 6TT  
020 7871 0589 | countryhouse@winkworth.co.uk

[winkworth.co.uk/winchester](http://winkworth.co.uk/winchester)

See all our properties at onTheMarket.com

# Winkworth

See things differently