



ST. PAULS VIEW APARTMENTS, 15 AMWELL STREET, LONDON, EC1R  
**£825,000 LEASEHOLD**

**AN EXCELLENT TWO BEDROOM, TWO BATHROOM  
APARTMENT COMPLETE WITH SECURE  
UNDERGROUND PARKING.**

Clerkenwell | 020 7405 1288 | [clerkenwell@winkworth.co.uk](mailto:clerkenwell@winkworth.co.uk)

**Winkworth**

for every step...

[winkworth.co.uk](http://winkworth.co.uk)



## DESCRIPTION:

A well-balanced apartment, it consists of two bedrooms (one with its own en-suite bathroom), a further shower room, reception room and a separate kitchen. Outside space is catered for by a south-facing balcony off the reception, and a large communal terrace situated on top of the building. The property further benefits from concierge, communal garden and an on-site private gym. St. Pauls View is in the heart of the much sort after Amwell Village. Amwell Street and the surrounding area prides itself on its eclectic array of independent boutiques and businesses, Exmouth Market is also right on its doorstep.



**Winkworth**

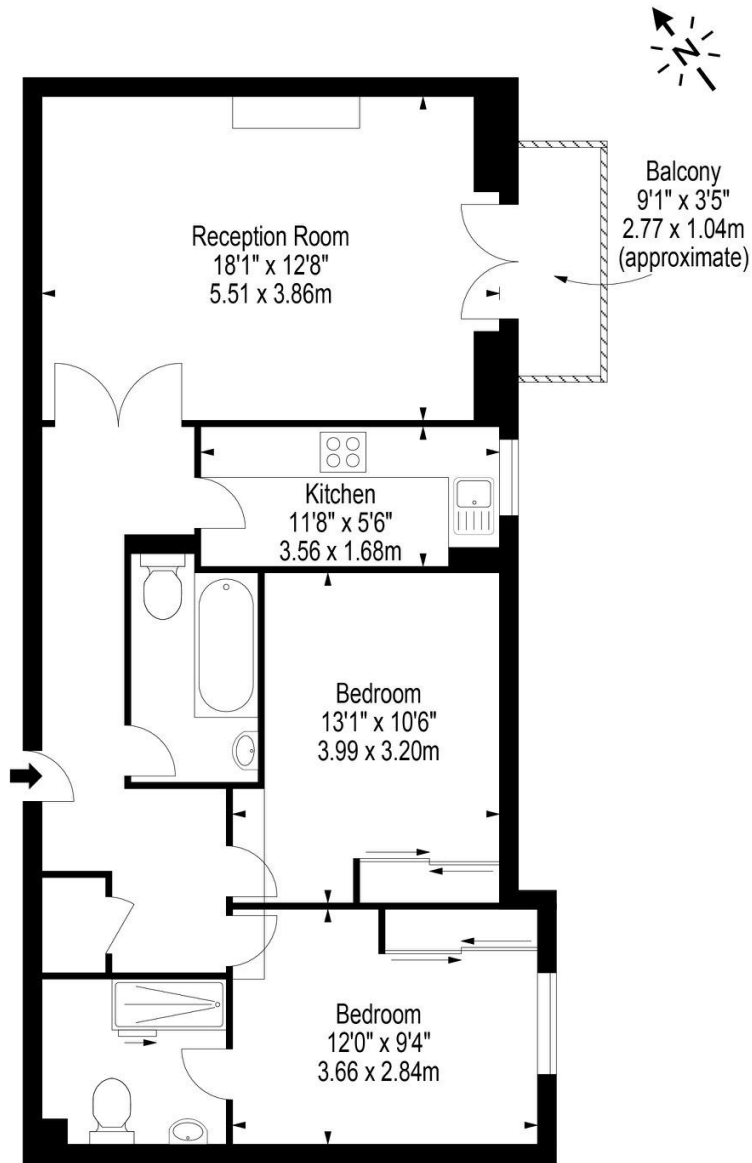
for every step...



**Winkworth**

for every step...

St. Pauls View Apartments, 15 Amwell Street, London, EC1R



First Floor

Approx Gross Internal Area **748 Sq Ft - 69.48 Sq M**

Floor Plan Supplied For Identification Purposes Only And May Not Be Accurate  
Floor Plan by [www.elegantmediasolution.com](http://www.elegantmediasolution.com)

This floorplan is for illustration purposes only and is not to scale. The position and size of doors, windows, appliances and other features are approximate.

Energy Efficiency Rating		Current	Potential
Very energy efficient - lower running costs			
(92-100)	A		
(81-91)	B		
(69-80)	C	79	80
(55-68)	D		
(39-54)	E		
(21-38)	F		
(1-20)	G		
Not energy efficient - higher running costs			
England, Scotland & Wales		EU Directive 2002/91/EC	



Clerkenwell | 020 7405 1288 | [clerkenwell@winkworth.co.uk](mailto:clerkenwell@winkworth.co.uk)

for every step...

[winkworth.co.uk](http://winkworth.co.uk)

Winkworth wishes to inform prospective buyers and tenants that these particulars are a guide and act as information only. All our details are given in good faith and believed to be correct at the time of printing but they don't form part of an offer or contract. No Winkworth employee has authority to make or give any representation or warranty in relation to this property. All fixtures and fittings, whether fitted or not are deemed removable by the vendor unless stated otherwise and room sizes are measured between internal wall surfaces, including furnishings.