



BASIRE STREET, LONDON, N1
£750,000 SHARE OF FREEHOLD

A WONDERFUL 2 BED APARTMENT IN THE HEART OF ISLINGTON

Islington | 0207 354 2480 | islington@winkworth.co.uk



DESCRIPTION:

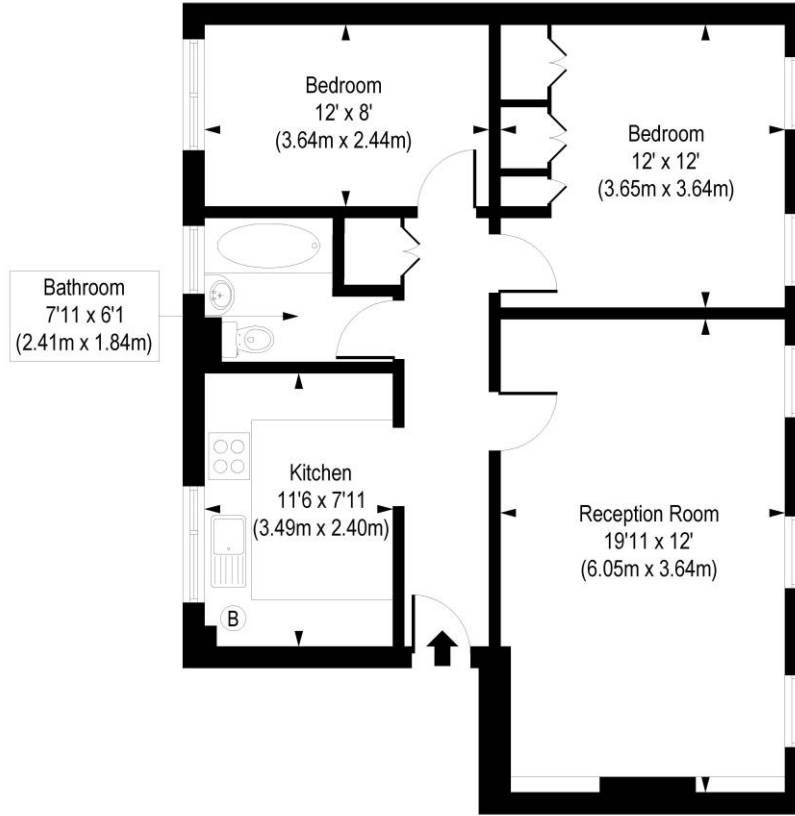
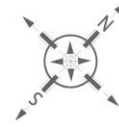
A fantastic two bedroom flat positioned on the top floor of this charming, well-maintained block in Islington. The property boasts well-proportioned rooms and is flooded with natural light throughout. Accommodation includes a generous master bedroom with inbuilt storage, a second double bedroom, family bathroom, kitchen, and a large reception/dining room. The property further benefits from a share of the freehold, secure bike storage and shared outdoor space.

Basire Street is within easy reach of the boutiques, bars and restaurants of Upper Street as well as moments from Regents Canal. The closest tubes can be found at Angel and Highbury & Islington stations whilst Old Street and Essex Road overground lines are also within easy reach. Numerous bus routes provide easy access the City and West End and international travel is made easy from Kings Cross St. Pancras.



Basire Street, N1

Approx. Gross Internal Floor Area 716 sq. ft / 66.53 sq. m



First Floor

COMPLIANT WITH RICS CODE OF MEASURING PRACTICE. Floorplan is for illustrative purposes only and is not to scale. Every attempt has been made to ensure the accuracy of the floorplan shown, however all measurements, fixtures, fittings and data shown are an approximate interpretation for illustrative purposes only. Liability for errors, omissions or mis-statement through negligence or otherwise is hereby excluded.

This floorplan is for illustration purposes only and is not to scale. The position and size of doors, windows, appliances and other features are approximate.

