



ELDON LODGE, READING, BERKSHIRE, RG1 4NH  
£2,500 PER MONTH FURNISHED

## THREE BEDROOM EXECUTIVE FIRST FLOOR APARTMENT SET IN A REFURBISHED GRADE II LISTED GEORGIAN BUILDING

Reading | 0118 4022 300 | [reading@winkworth.co.uk](mailto:reading@winkworth.co.uk)

**Winkworth**

for every step...

[winkworth.co.uk](http://winkworth.co.uk)



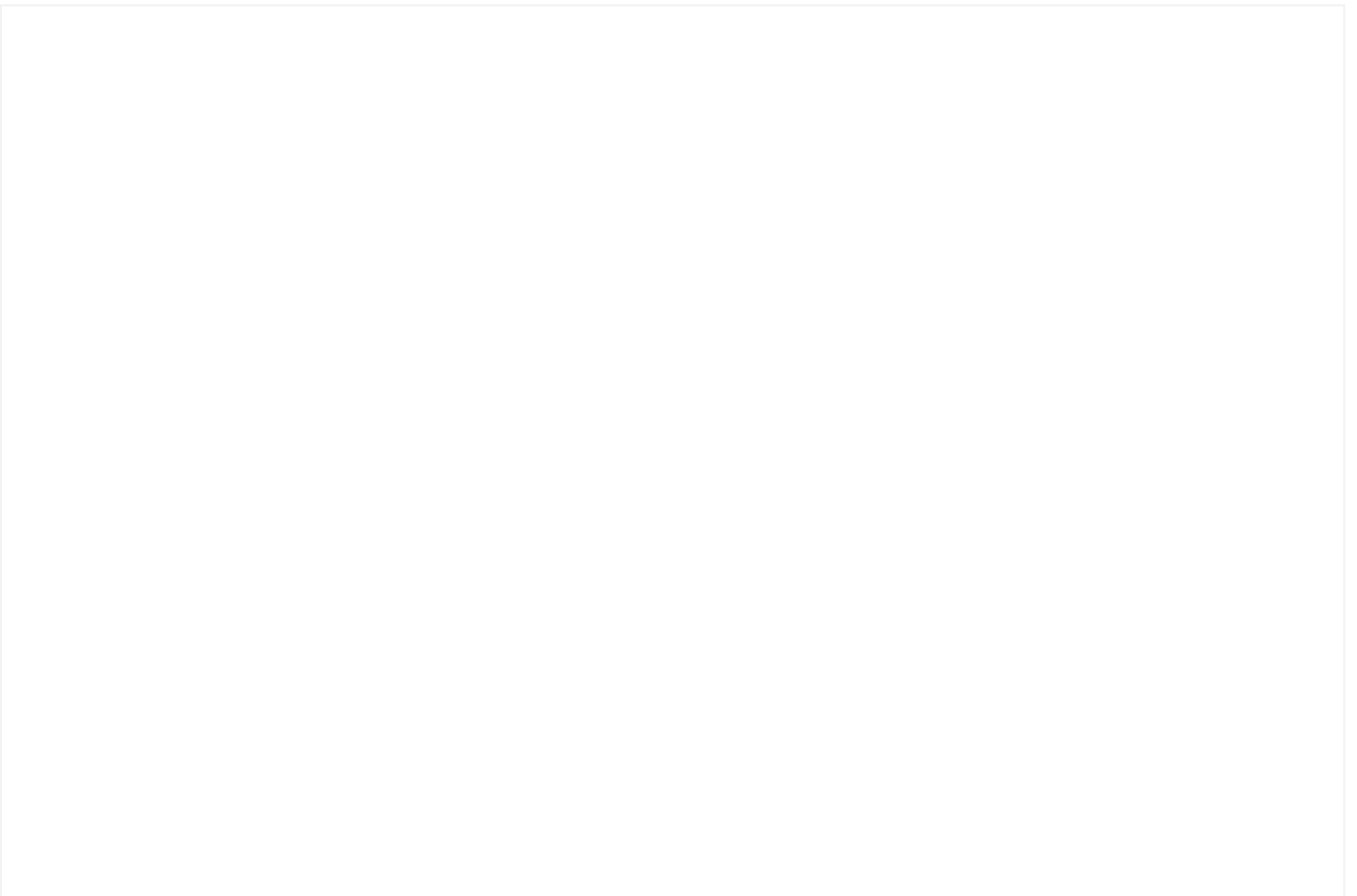
## DESCRIPTION:

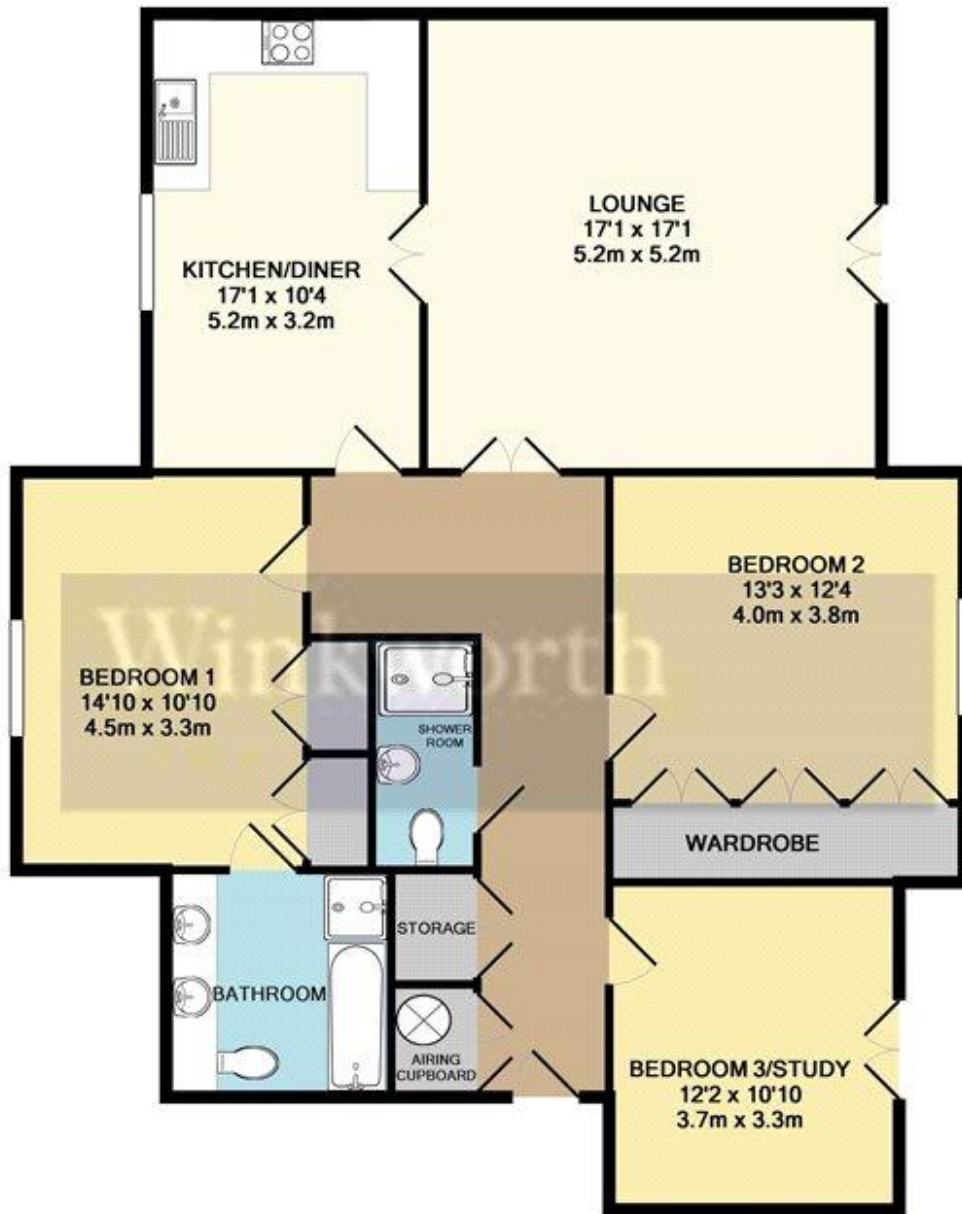
This stunning three bedroom executive first floor apartment is set in a Grade II listed Georgian building located in the heart of the town centre, giving easy access to Reading train station and The Oracle shopping complex. Accommodation comprises a large living area, fully fitted kitchen/dining room with integrated appliances, three double bedrooms, four piece en-suite to master and separate shower room. The property further benefits from two balconies and one allocated parking space within a secure gated car park. Available 7th December 2022. Furnished.

## AT A GLANCE

- Located in Reading town centre
- Grade II listed building
- Three double bedrooms
- Council tax band C
- Off-road parking
- Available 7th December
- Furnished



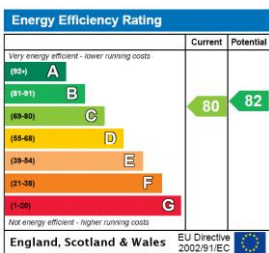




TOTAL APPROX. FLOOR AREA 1272 SQ.FT. (118.1 SQ.M.)

Whilst every attempt has been made to ensure the accuracy of the floor plan contained here, measurements of doors, windows, rooms and any other items are approximate and no responsibility is taken for any error, omission, or mis-statement. This plan is for illustrative purposes only and should be used as such by any prospective purchaser. The services, systems and appliances shown have not been tested and no guarantee as to their operability or efficiency can be given.  
Made with Metropix ©2016

This floorplan is for illustration purposes only and is not to scale. The position and size of doors, windows, appliances and other features are approximate.



Reading | 0118 4022 300 | reading@winkworth.co.uk



for every step...

winkworth.co.uk

Winkworth wishes to inform prospective buyers and tenants that these particulars are a guide and act as information only. All our details are given in good faith and believed to be correct at the time of printing but they don't form part of an offer or contract. No Winkworth employee has authority to make or give any representation or warranty in relation to this property. All fixtures and fittings, whether fitted or not are deemed removable by the vendor unless stated otherwise and room sizes are measured between internal wall surfaces, including furnishings.