



**Green Croft, Top Green, Lockerley, Romsey, Hampshire, SO51 0JP**

**Winkworth**



## BEAUTIFUL DETACHED FAMILY HOME WITH STUNNING VIEWS

Green Croft is a truly stunning family home situated on Top Green in the desirable village of Lockerley with superb and far reaching countryside views. Lockerley is located approximately six miles east of the market town of Romsey with the cities of Winchester, Salisbury and Southampton easily accessible. The village has an excellent convenience store and day to day facilities including the highly regarded primary school, church and public house, a pop-up Post office and coffee shop are just a short drive away. The property is also well served by local independent schools. Train stations are at nearby Dunbridge and West Dean and major road links including Junction 2 of the M27 offer excellent commuter access, whilst there are also many beautiful country walks in the immediate surrounding area.

The property has been lovingly extended and improved by the current owner to provide light and airy living accommodation ideally suited to the growing family. There is a very spacious open plan kitchen/dining/living room with stunning viewings over the grounds to the rear and farmland beyond. A further three reception rooms provide a formal dining room, sitting room and tv room. Stairs lead to the first floor and the five bedrooms. The master benefits from double doors opening onto the roof space taking advantage of the stunning views and also has a dressing area and en-suite facilities.

Outside a gated entrance leads to the driveway and double garage/ancillary accommodation currently a large games room. There is also a large separate brick-built out building/log store. The beautiful landscaped gardens of around 1.1 acres are laid to lawn with mature shrubs and trees, a terraced area with a safari breeze house make it ideal for 'al fresco' entertaining and feature pond.







# Winkworth

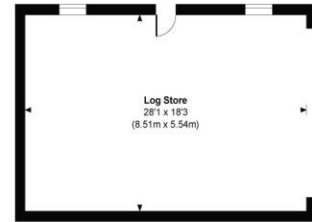
**Address: Green Croft, Top Green,  
Lockerley, Romsey, Hampshire,  
SO51 0JP  
Council Tax Band: "F"**



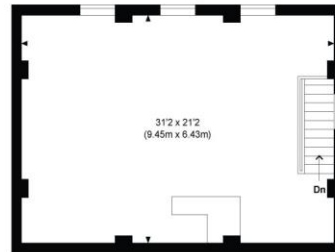
## Green Croft

**Approximate Gross Internal Area**  
**Main House = 3900 Sq Ft / 362.36 Sq M**  
**Garage = 1314 Sq Ft / 122.09 Sq M**  
**Log Store = 508 Sq Ft / 47.15 Sq M**  
**Breeze House = 231 Sq Ft / 21.48 Sq M**  
**Total = 5953 Sq Ft / 553.08 Sq M**

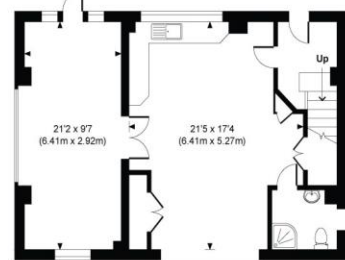
Outbuildings are not shown in correct orientation or location.  
Includes areas with restricted height less than 1.5m



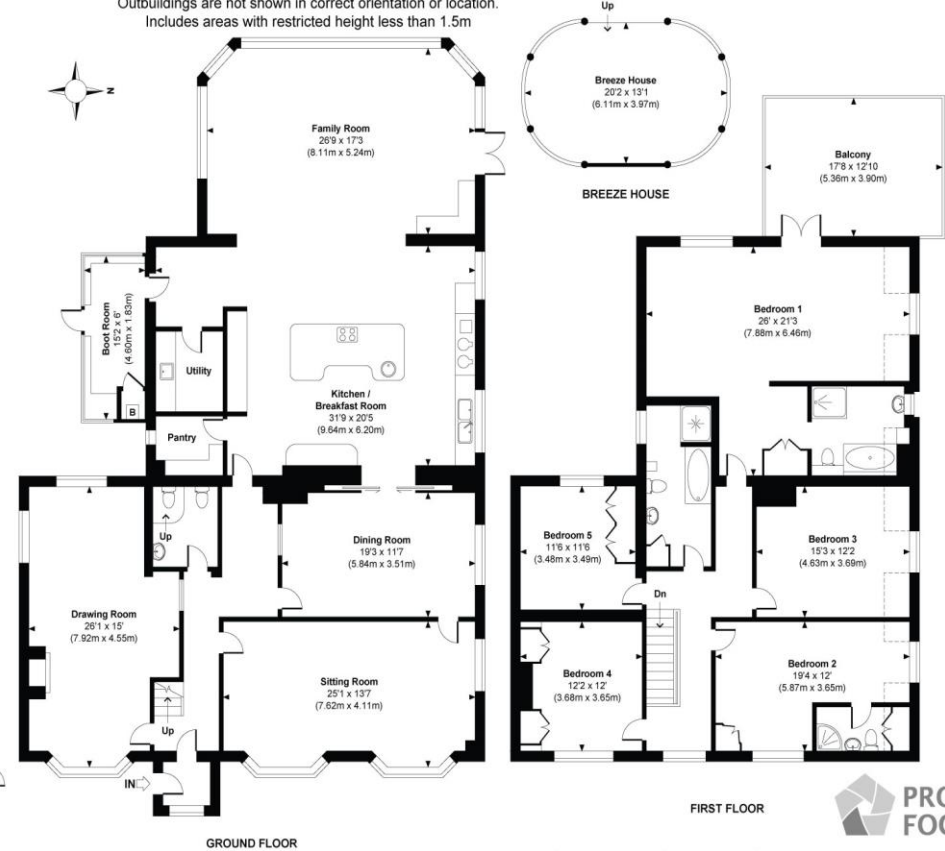
LOG STORE



GARAGE FIRST FLOOR



GARAGE GROUND FLOOR



FIRST FLOOR

GROUND FLOOR

--- Indicates restricted room height less than 1.5m.



© www.propertyfocus.co | Professional Property Photography & Floorplans

Measured and drawn to RICS guidelines. Plan is for illustrative purposes only and is not to scale. All dimensions, North point orientation and the size and placement of features are approximate and should not be relied on as a statement of fact. No responsibility is taken for any error, omission or misrepresentation.

[winkworth.co.uk/romsey](http://winkworth.co.uk/romsey)

### Winkworth Romsey

18 Market Place, Romsey, Hampshire, SO51 8NA  
01794 511911 | [romsey@winkworth.co.uk](mailto:romsey@winkworth.co.uk)

[winkworth.co.uk/romsey](http://winkworth.co.uk/romsey)

### Winkworth Winchester

2 Black Swan Buildings, Southgate Street,  
Winchester, Hampshire, SO23 9DT  
01962 866777 | [winchester@winkworth.co.uk](mailto:winchester@winkworth.co.uk)

### Winkworth Mayfair & Country House Department

11 Berkeley Street, Mayfair, London, W1J 8DS  
020 7871 0589 | [countryhouse@winkworth.co.uk](mailto:countryhouse@winkworth.co.uk)

# Winkworth

See things differently