



BECMEAD AVENUE, SW16
£1,650 PER MONTH UNFURNISHED

A VERY LARGE ONE-TWO BEDROOM GROUND FLOOR GARDEN FLAT IN A SOUGHT-AFTER LOCATION BY TOOTING BEC COMMON

Streatham | 020 8769 6699 | streatham@winkworth.co.uk

Winkworth

for every step...

winkworth.co.uk



DESCRIPTION:

Winkworth are pleased to present this large ground floor Edwardian conversion garden flat. The accommodation is basic in nature but has well-proportioned rooms with great natural light and is flexibly laid-out to offer either one or two large double bedrooms with one or two reception rooms. There is a white bathroom, built in storage as well as a fitted kitchen and a separate utility room. The wide, large, sunny rear garden is very well-screened for privacy from the neighbours either side and has a patio area and a lawn extending about 50ft in length. Becmead Avenue is a quiet tree-lined residential street off Streatham High Road consisting mainly of large semi-detached Edwardian houses running down to Tooting Bec Common and the Lido. It is close to the shopping and amenities of the High Road with transport into the City from Streatham station (Thameslink) and the West End from Streatham Hill station. The property is presented unfurnished, and Winkworth are appointed as sole agents and will be managing this tenancy. Available 21 November 2022.

AT A GLANCE

- Two Bedrooms
- Reception & Dining Room
- Bathroom
- Kitchen
- Utility Room
- 1,145 sq. Ft. Living Space
- Large Private Rear Garden
- Unfurnished
- Available 21 November 2022



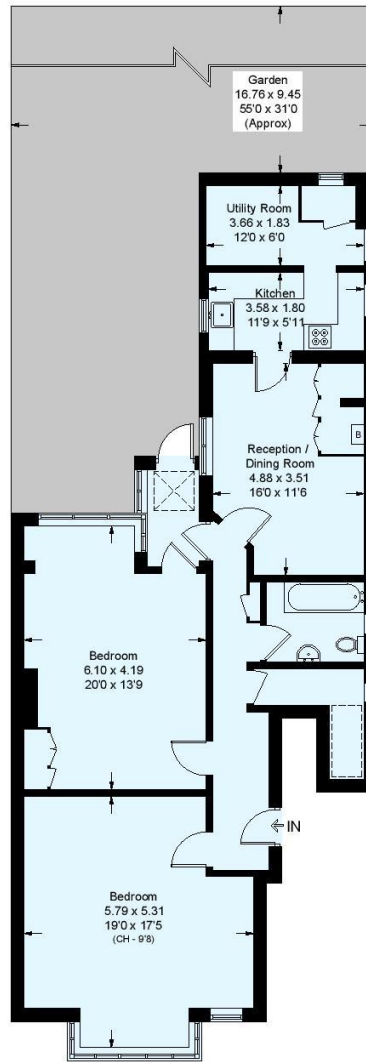


Becmead Avenue, SW16

Approximate Floor Area = 106.4 sq m / 1145 sq ft
Including Limited Use Area (3.3 sq m / 35 sq ft)



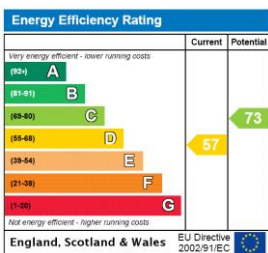
= Reduce head height below 1.5m



Ground Floor

This plan is for layout guidance only. Not drawn to scale unless stated. Windows and door openings are approximate. Whilst every care is taken in the preparation of this plan, please check all dimensions, shapes and compass bearings before making any decisions reliant upon them. (ID638128)

This floorplan is for illustration purposes only and is not to scale. The position and size of doors, windows, appliances and other features are approximate.



Streatham | 020 8769 6699 | streatham@winkworth.co.uk



for every step...

winkworth.co.uk

Winkworth wishes to inform prospective buyers and tenants that these particulars are a guide and act as information only. All our details are given in good faith and believed to be correct at the time of printing but they don't form part of an offer or contract. No Winkworth employee has authority to make or give any representation or warranty in relation to this property. All fixtures and fittings, whether fitted or not are deemed removable by the vendor unless stated otherwise and room sizes are measured between internal wall surfaces, including furnishings.