



BLACKHEATH HILL, GREENWICH, LONDON, SE10  
**£875,000 FREEHOLD**

**A SUPERB AND EXTREMELY WELL PRESENTED  
FOUR BEDROOM VICTORIAN HOUSE WHICH IS  
SET OVER THREE FLOORS AND IS LOCATED JUST  
OFF THE OPEN HEATH!**

Greenwich | 02030533033 | [greenwich@winkworth.co.uk](mailto:greenwich@winkworth.co.uk)

**Winkworth**

*winkworth.co.uk*

See things differently



## DESCRIPTION:

A superb and extremely well presented four bedroom Victorian house which is set over three floors and is located just off the open heath!

The current vendors have owned the property for five years and in that time it has gone through a full refurbishment including an extension to the rear, which means it is now presented in the very highest order. The accommodation comprises of a stunning kitchen breakfast room with granite worktops and fitted NEFF appliances. There is a through reception room and also a separate cloakroom. Upstairs there are four good sized double bedrooms with two ensuites and a family bathroom. Also a well fitted utility room and storage room, along with good loft space.

As mentioned, Blackheath Hill is well located just off the open heath and just a short walk to the gates of Greenwich Park. It's also on the cusp of Blackheath, Greenwich and Lewisham giving an excellent choice of mainline rail, DLR and a huge range of shops and restaurants.

## AT A GLANCE

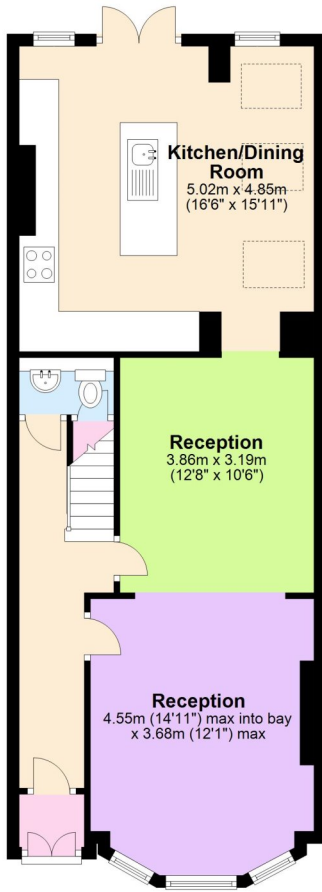
- Victorian house
- four bedrooms
- three storey
- fully refurbished
- immaculate condition
- large kitchen breakfast room
- double and triple glazed
- three bathrooms
- utility room
- sep cloakroom
- storage room and loft





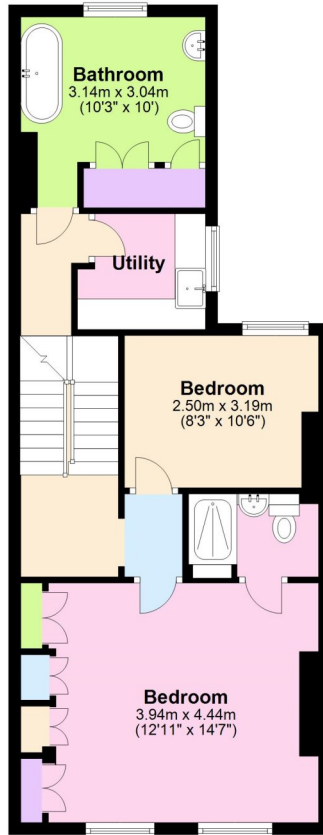
### Ground Floor

Approx. 64.7 sq. metres (696.0 sq. feet)



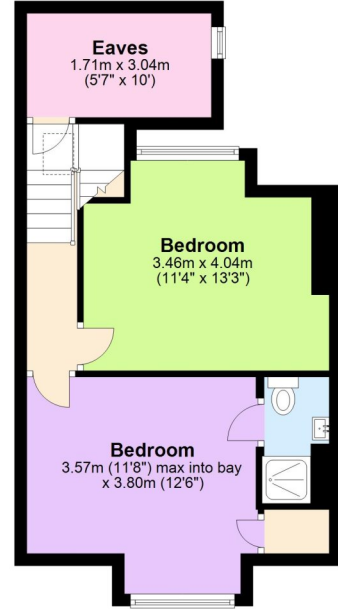
### First Floor

Approx. 55.1 sq. metres (592.6 sq. feet)



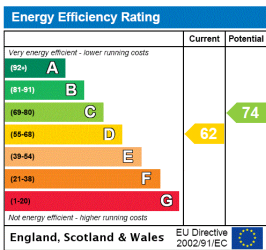
### Second Floor

Approx. 33.7 sq. metres (362.7 sq. feet)



Total area: approx. 153.4 sq. metres (1651.4 sq. feet)

This floorplan is for illustration purposes only and is not to scale. The position and size of doors, windows, appliances and other features are approximate.



Greenwich | 02030533033 | greenwich@winkworth.co.uk



winkworth.co.uk

See things differently

Winkworth wishes to inform prospective buyers and tenants that these particulars are a guide and act as information only. All our details are given in good faith and believed to be correct at the time of printing but they don't form part of an offer or contract. No Winkworth employee has authority to make or give any representation or warranty in relation to this property. All fixtures and fittings, whether fitted or not are deemed removable by the vendor unless stated otherwise and room sizes are measured between internal wall surfaces, including furnishings.