



AMHERST AVENUE, LONDON, W13
£1,950,000 FREEHOLD

Ealing & Acton | 0208 896 0123 | ealing@winkworth.co.uk

Winkworth

for every step...

winkworth.co.uk



A stunning family home boasting an overall size in excess of 2,700sqft. Arranged over three floors, the property offers well balanced accommodation that could well suit a young family with room for an au pair; extended family or indeed buyers that seek sufficient space to work from home.

The hub of this home is the 25' square kitchen/dining/ sitting room. Ideal for entertaining both family and friends. The four first floor bedrooms are all of generous proportions with an ensuite to the master; whilst the upper bedroom with an ensuite bathroom extends to a fabulous 28'.

With a well maintained garden, this house is well placed for some of the excellent schools, and of course Ealing Broadway with its wide range of shops, bars, restaurants and transport links, particularly with the tube station being a Crossrail link.



Winkworth

for every step...



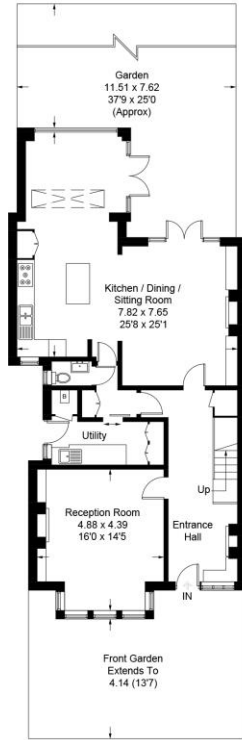
Winkworth

for every step...

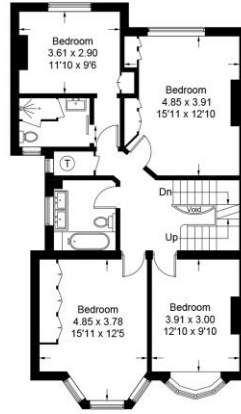
Amherst Avenue, W13



Approximate Gross Internal Area = 257.3 sq m / 2769 sq ft (Including Eaves / Voids)



Ground Floor



First Floor



Second Floor

 = Reduced headroom below 1.5m / 5'0"

Illustration for identification purposes only,
measurements are approximate, not to scale. (ID755572)

This floorplan is for illustration purposes only and is not to scale. The position and size of doors, windows, appliances and other features are approximate.

Ealing & Acton | 0208 896 0123 | ealing@winkworth.co.uk

Winkworth

for every step...

winkworth.co.uk

Winkworth wishes to inform prospective buyers and tenants that these particulars are a guide and act as information only. All our details are given in good faith and believed to be correct at the time of printing but they don't form part of an offer or contract. No Winkworth employee has authority to make or give any representation or warranty in relation to this property. All fixtures and fittings, whether fitted or not are deemed removable by the vendor unless stated otherwise and room sizes are measured between internal wall surfaces, including furnishings.