



**THE PIPER BUILDING, FULHAM, SW6**  
**£1,750,000 LEASEHOLD**

Fulham & Parsons Green | 020 7731 3388 | [fulham@winkworth.co.uk](mailto:fulham@winkworth.co.uk)



for every step...

[winkworth.co.uk](http://winkworth.co.uk)



## DESCRIPTION:

This three bedroom flat is located on the fifth floor of a modern block with fantastic views over London from the private roof terrace.

The flat is contemporary and comprises a large open plan kitchen/reception room with floor to ceiling sliding doors allowing an abundance of natural light to fill the room with an abundance of space for a dining table and chairs, sofas and a coffee table. Above there is a mezzanine reception room and bar area which is ideal for entertaining. In addition, there are three bedrooms and two modern bathrooms, one of which is en suite. The private roof terrace spans over 850sqft and has far reaching views of London's skyline, it is perfect for a summer evening barbeque.

The Piper building is located close to the River Thames, South Park and is a short walk away from Parsons Underground Station (District Line) and Wandsworth Town railway station (National Rail), the area is well served with bus routes into central London and beyond. There is 24 hour concierge and gated parking.

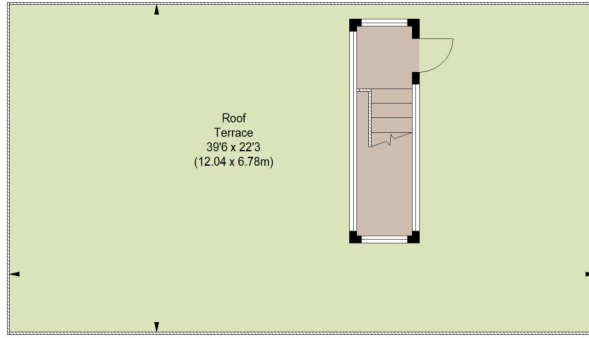
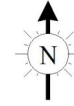
## ACCOMMODATION

Leasehold 975 years, 3 Bedrooms, 2 to 3  
Bathrooms, Flat/Apartment, Upper Floor with Lift,  
Roof Terrace, Off Street Parking, Modern, Good  
decoration



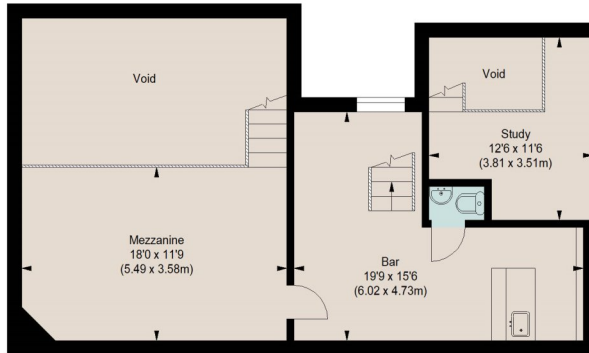
# PIPER BUILDING, SW6

Approximate gross internal area  
1899 sq ft / 176.42 sq m  
(Including Voids)



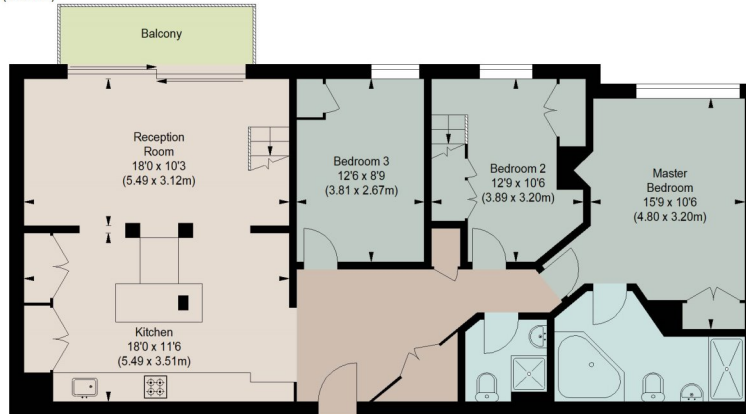
## SEVENTH FLOOR

(5.22 m<sup>2</sup>)



## SIXTH FLOOR

(72.58 m<sup>2</sup>)



## FIFTH FLOOR

(98.60 m<sup>2</sup>)

Illustration For Identification Purposes Only.  
All measurements and areas are approximate, not to scale.

This floorplan is for illustration purposes only and is not to scale. The position and size of doors, windows, appliances and other features are approximate.

Fulham & Parsons Green | 020 7731 3388 | fulham@winkworth.co.uk

# Winkworth

for every step...

[winkworth.co.uk](http://winkworth.co.uk)

Winkworth wishes to inform prospective buyers and tenants that these particulars are a guide and act as information only. All our details are given in good faith and believed to be correct at the time of printing but they don't form part of an offer or contract. No Winkworth employee has authority to make or give any representation or warranty in relation to this property. All fixtures and fittings, whether fitted or not are deemed removable by the vendor unless stated otherwise and room sizes are measured between internal wall surfaces, including furnishings.