



CARLTON MANSIONS, HOLLAND PARK GARDENS, W14
£1,150,000 SHARE OF FREEHOLD

**A SPACIOUS AND NEWLY REFURBISHED TWO BEDROOM APARTMENT SET
WITHIN AN ATTRACTIVE VICTORIAN RED BRICK MANSION BLOCK.**

Kensington | 020 7727 1500
118 Kensington Church Street, Kensington, London, W8 4BH

Winkworth

for every step...

winkworth.co.uk



DESCRIPTION:

A spacious and newly refurbished two bedroom apartment set within an attractive Victorian red brick mansion block. The bright west facing reception room has herringbone wood flooring, bay window and original fireplace. There is also a contemporary kitchen/dining room, two double bedrooms, en suite bathroom and shower room.

Holland Park Gardens is located off Holland Park Avenue with its many excellent shops, restaurants and transport facilities. The green open spaces of Holland Park are also within easy walking distance.

ACCOMMODATION:

Entrance Hall | Reception Room | Kitchen/Dining Room | Principal Bedroom with En Suite Bathroom | Second Bedroom | Shower Room

LOCAL AUTHORITY:

The Royal Borough of Kensington & Chelsea

NEAREST PUBLIC TRANSPORT:

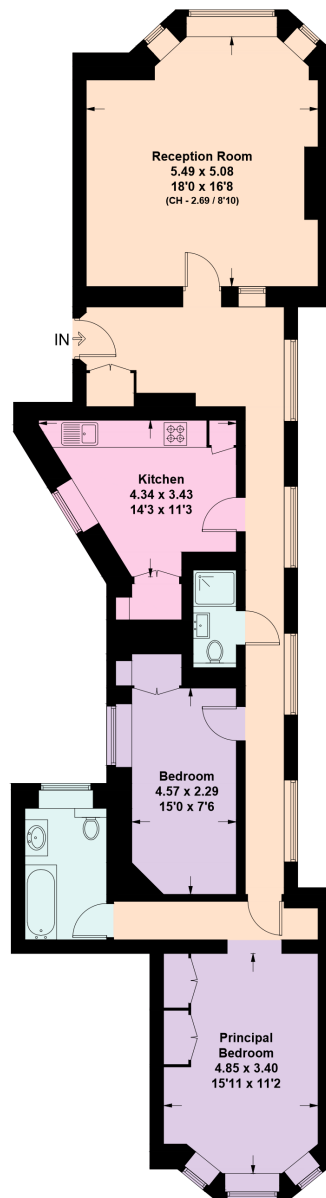
Holland Park
Shepherds Bush





Carlton Mansions, W14

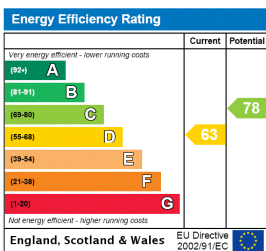
Approximate Floor Area = 109.2 sq m / 1175 sq ft
Including Limited Use Area (3.9 sq m / 42 sq ft)



Lower Ground Floor

This plan is for layout guidance only. Not drawn to scale unless stated. Windows and door openings are approximate. Whilst every care is taken in the preparation of this plan, please check all dimensions, shapes and compass bearings before making any decisions reliant upon them. (ID891931)

This floorplan is for illustration purposes only and is not to scale. The position and size of doors, windows, appliances and other features are approximate.



Lease: 108 years remaining

Ground Rent: N/A

Service Charge: £3600 P/A

Council tax band: F

Please note all figures are approximate

Kensington | 020 7727 1500 | kensington@winkworth.co.uk
118 Kensington Church Street, Kensington, London, W8 4BH

Winkworth

for every step...

winkworth.co.uk

Winkworth wishes to inform prospective buyers and tenants that these particulars are a guide and act as information only. All our details are given in good faith and believed to be correct at the time of printing but they don't form part of an offer or contract. No Winkworth employee has authority to make or give any representation or warranty in relation to this property. All fixtures and fittings, whether fitted or not are deemed removable by the vendor unless stated otherwise and room sizes are measured between internal wall surfaces, including furnishings.