



Grove Mews, Brook Green, W6

£700,000 Freehold

An unmodernised three bedroom mews house with garden, offering scope for extension and improve, subject to the usual consents.

Reception Room | Kitchen | 3 Bedrooms | Bathroom | Garage | Garden | 902 Sq Ft / 84 Sq M | Council Tax Band F | EPC Rating Band E

Winkworth

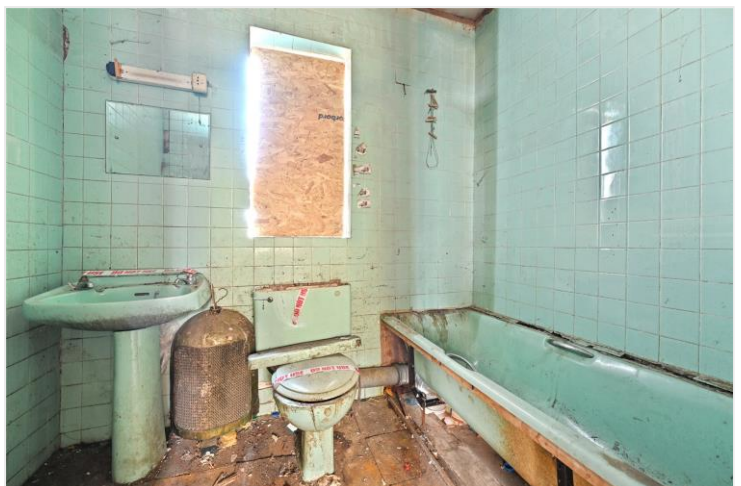


LOCATION

Grove Mews is in a row of houses which lies parallel to Hammersmith Grove. Ideally located for a range of amenities which include a number of local independent shops, delis, pubs and restaurants. A range of transport links are close to hand with Hammersmith station serving four Underground lines and Shepherds Bush station which offers Central Line and London Overground services.

DESCRIPTION

In need of total renovation, the property currently comprises reception room/kitchen and garage on the ground floor, with the first floor offering three bedrooms and bathroom; there is also the advantage of a private rear garden. There is scope to further extend, subject to the usual necessary consents, with other houses on the street having added an additional storey.





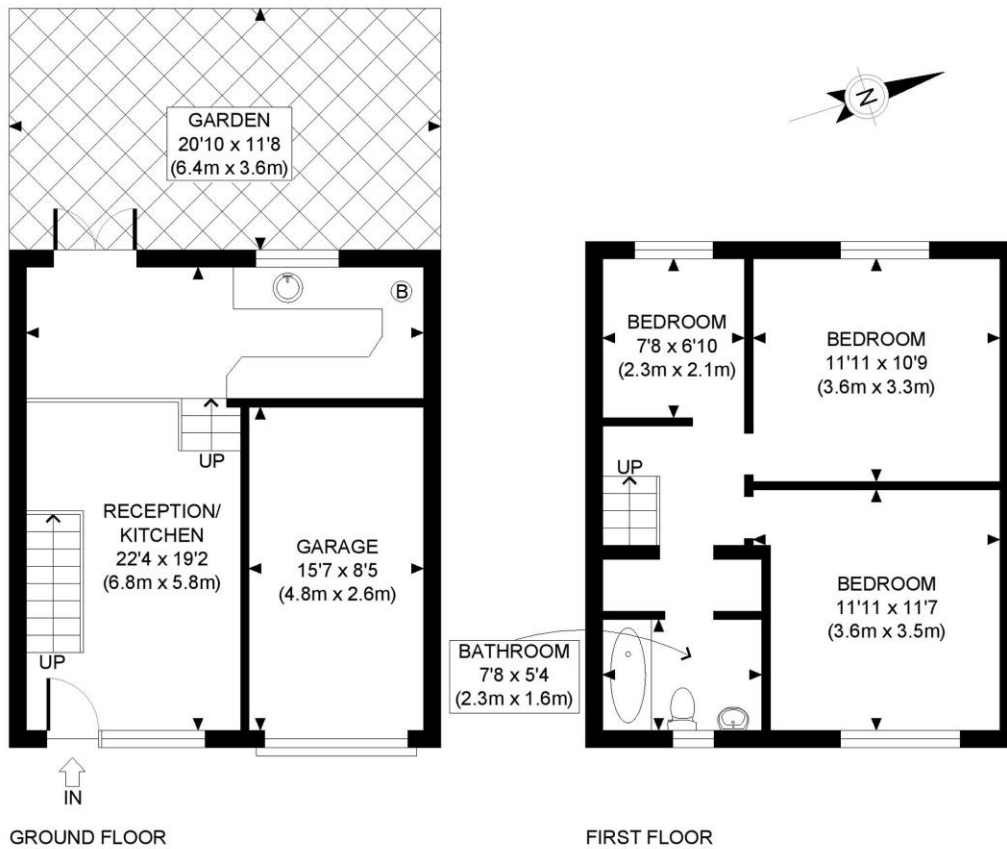
LOCAL AUTHORITY
Hammersmith and Fulham

TENURE
Freehold.

PRICE: £700,000 Freehold

Energy Efficiency Rating

	Current	Potential
Very energy efficient - lower running costs		
(92+) A		
(81-91) B		87
(69-80) C		
(55-68) D		
(39-54) E	40	
(21-38) F		
(1-20) G		
Not energy efficient - higher running costs		
England, Scotland & Wales	EU Directive 2002/91/EC	



APPROX. GROSS INTERNAL FLOOR AREA: 902 SQ FT/ 84 SQM

PROPERTY PHOTO PLANS.co.uk
ONE STOP SHOP FOR PROPERTIES MARKETING

Whilst every attempt has been made to ensure the accuracy of the floor plan contained here, measurements of the doors, windows, rooms and any other items are approximate and no responsibility is taken for any errors, omissions, or miss-statement. This plan is for illustrative purposes only and should be used as such by any prospective client. The services, systems and appliances shown have not been tested and no guarantee as to the operability or efficiency can be given.

The displayed square footage is taken from the floor plans with measurements created using the Royal Institute of Chartered Surveyors' Code of Practice for Measuring. These measurements are approximate and included for illustrative purposes only. Winkworth does not make any representation as to the accuracy of these measurements and you should seek to verify them for yourself. Winkworth accept no liability for any loss you may suffer if you rely on these measurements.

Hammersmith | 0207 371 4466 | hammersmith@winkworth.co.uk



for every step...

Under the Property Misdescriptions Act 1991, these Particulars are a guide and act as information only. All details are given in good faith and are believed to be correct at time of printing. Winkworth give no representation as to their accuracy and potential purchasers or tenants must satisfy themselves by inspection or otherwise as to their correctness. No employee of Winkworth has authority to make or give any representation or warranty in relation to this property.