



GOLDSMITH LANE, KINGSBURY, LONDON., NW9
£385,000 LEASEHOLD

TWO DOUBLE BEDROOM FIRST FLOOR GARDEN MAISONETTE

Kingsbury | 020 8204 0000 | kingsbury@winkworth.co.uk



winkworth.co.uk

See things differently

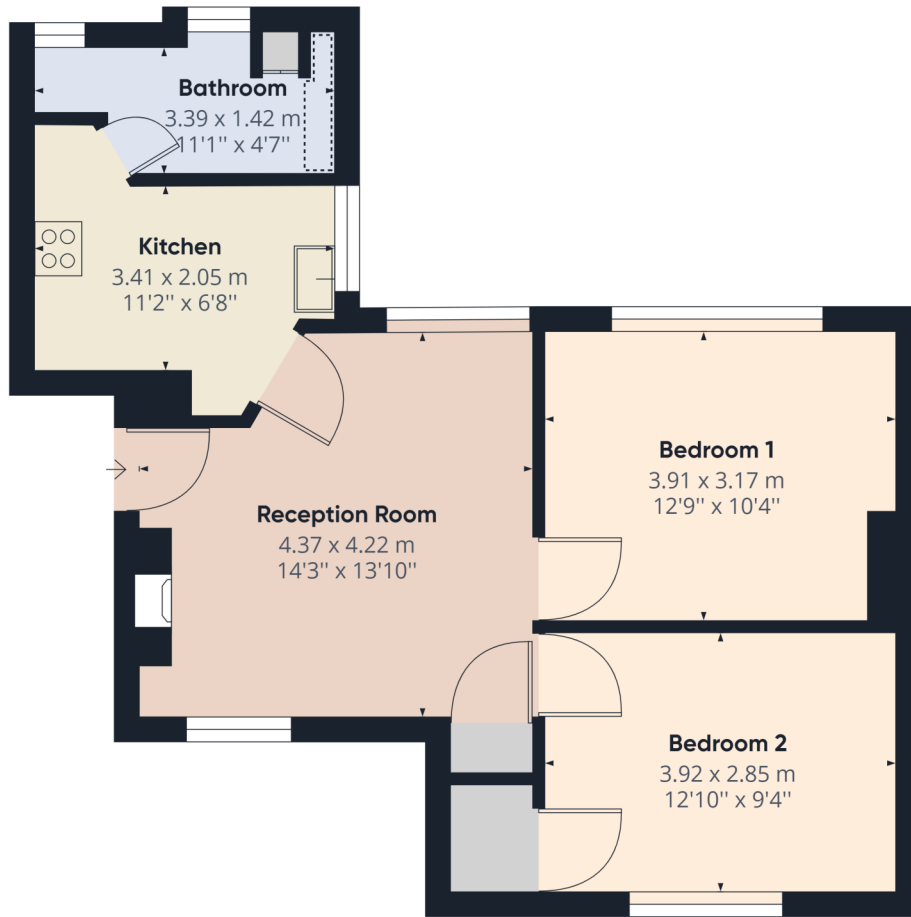


DESCRIPTION: Winkworth are delighted to offer as sole agents this rarely available and rich in character two bedroom, purpose built maisonette set in the heart of the picturesque 'Roe Green Village' conservation area. Offered with Leasehold tenure, this extremely well-presented property is situated on the first floor and boasts a bright and airy open plan reception room and kitchen. Both bedrooms offer spacious and comfortable living, and the neutral, modern bathroom conveniently offers a space saving integrated storage system. Externally, the property benefits from its own delightful rear garden as well as ample street parking. Positioned peacefully away from the hustle and bustle of normal city living, yet still being within close proximity Colindale Station (Northern Line), Kingsbury Station (Jubilee Line) and the array of local amenities, places of worship and reputable primary and secondary schools such as Kingsbury High School and Roe Green Primary School that Kingsbury has to offer, this is a fantastic location to be enjoyed by all. To entirely appreciate all aspects of this lovely home and its tasteful surroundings, an internal insight is highly advised.





Winkworth



Approximate total area⁽¹⁾

568.56 ft²
52.82 m²

Reduced headroom

6.92 ft²
0.64 m²

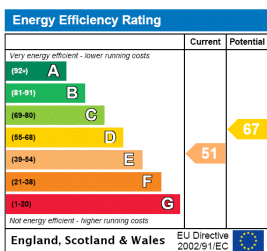
(1) Excluding balconies and terraces

☐ Reduced headroom
(below 1.5m/4.92ft)

While every attempt has been made to ensure accuracy, all measurements are approximate, not to scale. This floor plan is for illustrative purposes only.

GIRAFFE360

This floorplan is for illustration purposes only and is not to scale. The position and size of doors, windows, appliances and other features are approximate.



Kingsbury | 020 8204 0000 | kingsbury@winkworth.co.uk



winkworth.co.uk

See things differently

Winkworth wishes to inform prospective buyers and tenants that these particulars are a guide and act as information only. All our details are given in good faith and believed to be correct at the time of printing but they don't form part of an offer or contract. No Winkworth employee has authority to make or give any representation or warranty in relation to this property. All fixtures and fittings, whether fitted or not are deemed removable by the vendor unless stated otherwise and room sizes are measured between internal wall surfaces, including furnishings.