



B, LANCASTER ROAD, LONDON, W11
£995 PER WEEK UNFURNISHED

STUNNING THREE BEDROOM MAISONETTE WITH PRIVATE GARDEN

North Kensington | 020 7792 5000 | northkensington@winkworth.co.uk

Winkworth

for every step...

winkworth.co.uk



DESCRIPTION:

Property comprises separate entrance, utility cupboard, spacious living room with fireplace and wood floors, fantastic eat in kitchen/conservatory with doors out to large private garden and separate study/bedroom and cloakroom. The property further comprises master bedroom with good storage and an en suite bathroom, second double bedroom, second bathroom and third bedroom. The property is beautifully presented throughout and is offered unfurnished.



Winkworth

for every step...

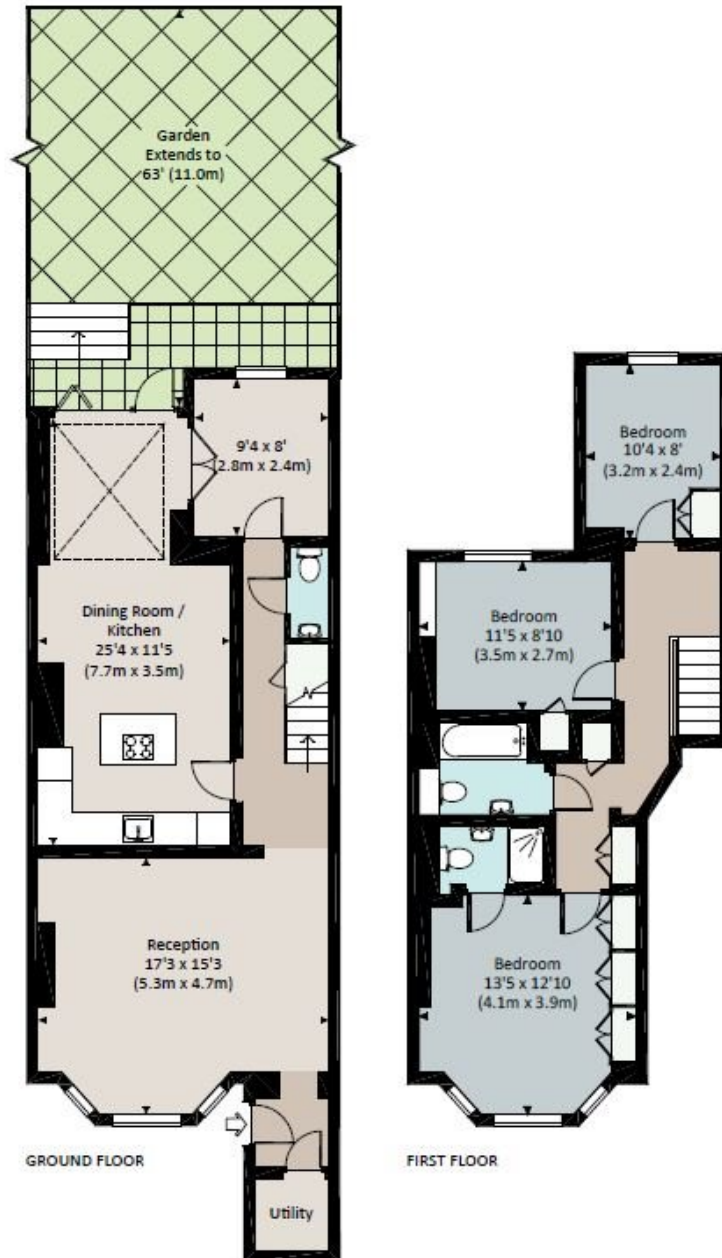


Winkworth

for every step...

LANCASTER ROAD, W11

Approx. gross internal area
1311 Sq Ft. / 121.8 Sq M.



All measurements have been made in accordance with RICS Code of Measuring Practice which are approximate only and only for illustrative purposes. For the avoidance of doubt, Dowling Jones Design shall not be liable for any reliance on these measurements. © 2015 www.dowlingjones.com 020 7610 9003

This floorplan is for illustration purposes only and is not to scale. The position and size of doors, windows, appliances and other features are approximate.

North Kensington | 020 7792 5000 | northkensington@winkworth.co.uk

Winkworth

for every step...

winkworth.co.uk

Winkworth wishes to inform prospective buyers and tenants that these particulars are a guide and act as information only. All our details are given in good faith and believed to be correct at the time of printing but they don't form part of an offer or contract. No Winkworth employee has authority to make or give any representation or warranty in relation to this property. All fixtures and fittings, whether fitted or not are deemed removable by the vendor unless stated otherwise and room sizes are measured between internal wall surfaces, including furnishings.