



FULLER STREET, LONDON, NW4
£550,000 FREEHOLD

**SPACIOUS THREE BEDROOM TERRACED
HOUSE WELL LOCATED IN THE HEART OF
HENDON CLOSE TO BRENT STREET AND THE**

Hendon | 020 8202 1031 | hendon@winkworth.co.uk

Winkworth

for every step...

winkworth.co.uk



DESCRIPTION:

We are pleased to offer for sale this spacious three bedroom terraced house well located in the heart of Hendon close to Brent Street and the many transport links the area has to offer. With approx 971 sq ft of living space the house comprises on the ground floor; guest WC, large living area with semi open plan kitchen with patio doors out to private garden. The upper floor comprises; family bathroom and three well sized double bedrooms. Further benefits include, gas central heating, off street residents parking and ample storage. Freehold.

EPC: To follow.

Council Tax Band: D

AT A GLANCE

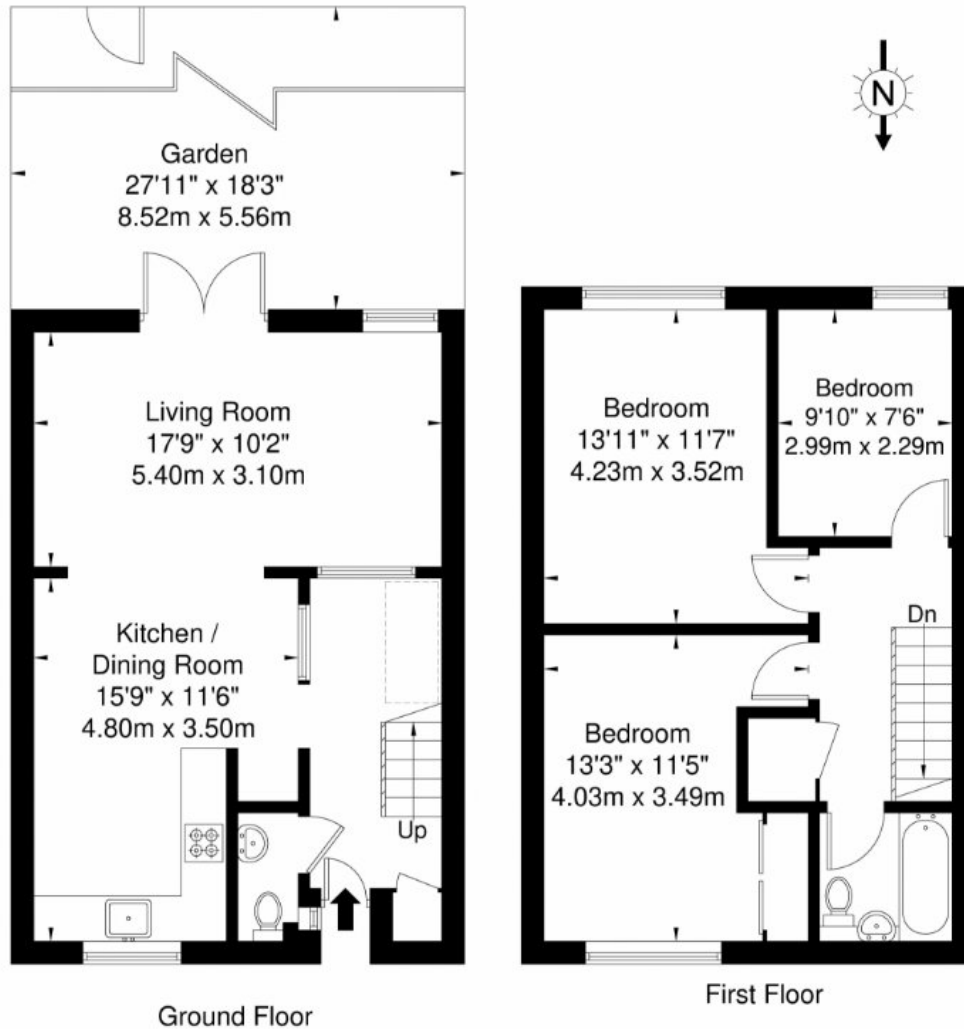
- THREE BEDROOM TERRACED HOUSE
- WELL LOCATED IN THE HEART OF HENDON
- CLOSE TO UNI SHOPS AND MANY TRANSPORT LINKS
- LOTS OF POTENTIAL
- CHAIN FREE
- FREEHOLD





Fuller Street, NW4 4RR

Approx. Gross Internal Area = 90.3 sq m / 971 sq ft



Ref

Copyright **BLEU PLAN**

The Floor plan is not to scale and measurements and areas shown are approximate and therefore should be used for illustrative purposes only. The plan has been prepared in accordance with the RICS code of Measuring Practice and whilst we have confidence in the information produced it must not be relied on. If there is any aspect of particular importance, you should carry out or commission your own inspection of the property.

Copyright @ BLEUPLAN

This floorplan is for illustration purposes only and is not to scale. The position and size of doors, windows, appliances and other features are approximate.

Hendon | 020 8202 1031 | hendon@winkworth.co.uk

Winkworth

for every step...

winkworth.co.uk

Winkworth wishes to inform prospective buyers and tenants that these particulars are a guide and act as information only. All our details are given in good faith and believed to be correct at the time of printing but they don't form part of an offer or contract. No Winkworth employee has authority to make or give any representation or warranty in relation to this property. All fixtures and fittings, whether fitted or not are deemed removable by the vendor unless stated otherwise and room sizes are measured between internal wall surfaces, including furnishings.