



CRYSTAL PALACE ROAD, EAST DULWICH, SE22
£1,300,000 FREEHOLD

THIS FOUR BEDROOM VICTORIAN SEMI-DETACHED HOUSE HAS BEEN LOVINGLY RESTORED AND REFURBISHED.

Dulwich | 020 8299 2722 | dulwich@winkworth.co.uk

Winkworth

winkworth.co.uk

See things differently



DESCRIPTION:

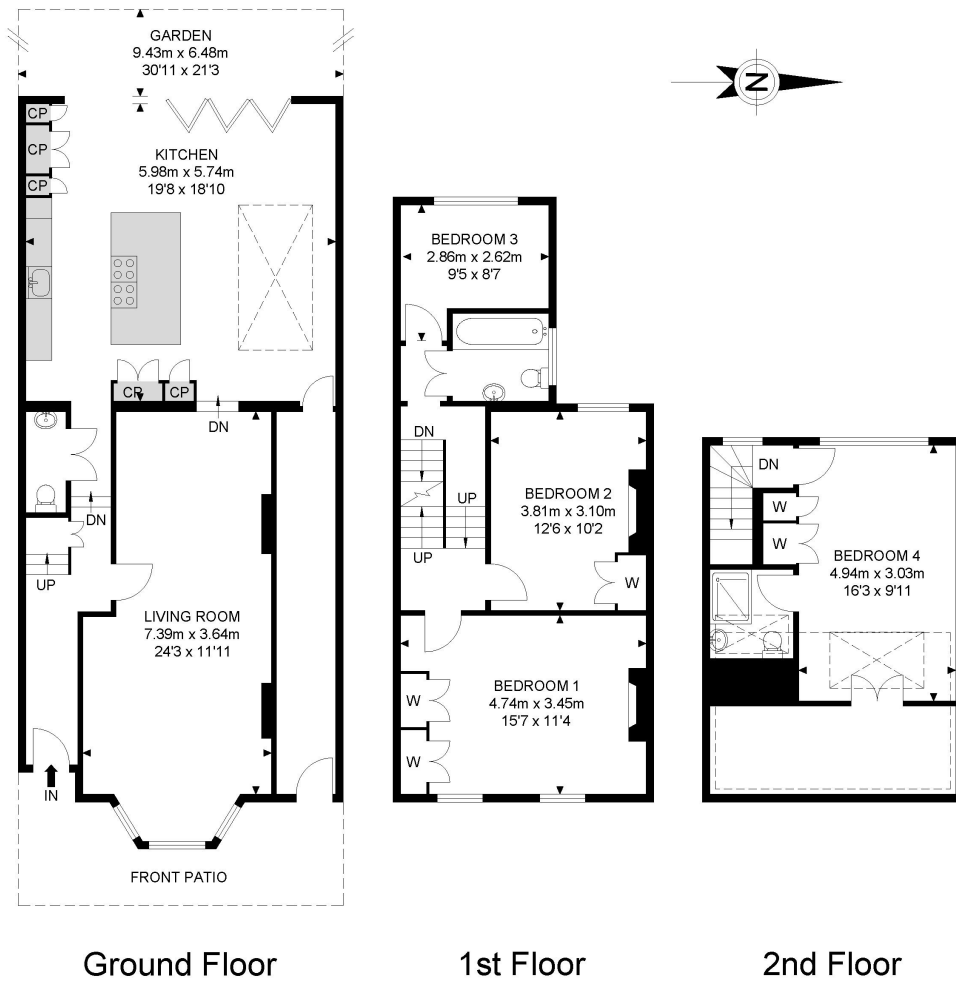
This beautifully presented four-bedroom Victorian semi-detached house has been lovingly restored and extended to the highest standards. The house has a fantastic rear-and-side extension with underfloor heating and floor-to-ceiling bi-fold doors, leading to a private garden with south/west aspects. The side return has been modified and secured to provide a huge amount of storage space. The generous double reception retains wooden flooring and has a built-in desk and bookshelf. On the first floor there are three good size bedrooms and a family bathroom, and the second floor has recently been converted (with full planning permission) to provide the fourth bedroom with ensuite/shower room. The loft has stunning views across the rooftops of East Dulwich as far as the City and Vauxhall. Located close to excellent nurseries/schools, Dulwich Park, Peckham Rye Park, and all the amenities on Lordship Lane. Transport links to Central London via East Dulwich or Peckham Rye. This is a stunning family home in a superb location.

AT A GLANCE

- Four Bedrooms
- Stunning open plan Kitchen-Diner
- Very private garden
- Wonderful loft conversion
- Large covered side return
- Excellent Location



Crystal Palace Road



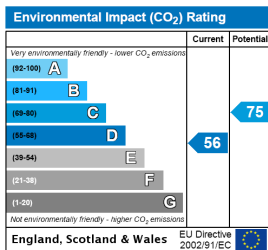
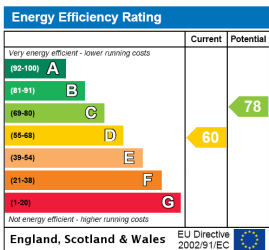
APPROX. GROSS INTERNAL FLOOR AREA 1554.30 SQ FT / 144.40 SQM
 APPROX. GROSS EXTERNAL FLOOR AREA 121.63 SQ FT / 11.30 SQM
 RESTRICTED HEIGHT AREA 159.30 SQ FT / 14.80 SQM

Whilst every attempt has been made to ensure the accuracy of the floor plan contained here, measurements of doors, windows, rooms and any other items are approximated and no responsibility is taken for any error, omission or mis-statement. This plan is for illustrative purposes only and should be used as such by any prospective purchaser. The service, system and appliances shown have not been tested and no guarantee as to their operability or efficiency can be given.

© SpacePhoto

Photography and Floor Plan

This floorplan is for illustration purposes only and is not to scale. The position and size of doors, windows, appliances and other features are approximate.



Dulwich | 020 8299 2722 | dulwich@winkworth.co.uk



winkworth.co.uk

See things differently

Winkworth wishes to inform prospective buyers and tenants that these particulars are a guide and act as information only. All our details are given in good faith and believed to be correct at the time of printing but they don't form part of an offer or contract. No Winkworth employee has authority to make or give any representation or warranty in relation to this property. All fixtures and fittings, whether fitted or not are deemed removable by the vendor unless stated otherwise and room sizes are measured between internal wall surfaces, including furnishings.