



FLAT 2, RIVERSDALE ROAD, LONDON, N5  
£875,000 SHARE OF FREEHOLD

A WONDERFUL, THREE BEDROOM PERIOD  
CONVERSION WITH ITS OWN PRIVATE  
TERRACE.

Highbury | 0207 989 7000 | [highbury@winkworth.co.uk](mailto:highbury@winkworth.co.uk)

**Winkworth**

[winkworth.co.uk](http://winkworth.co.uk)

See things differently



## DESCRIPTION:

A stunning, three double bedroom, two bathroom period conversion set across the top two floors of this handsome Victorian building in N5. Standing in excess of 1,000 sqft, the property offers a wealth of charm and is currently set out as a two bedroom property with additional dining room. The bright reception room spans the full width of the front of the building while the fully equipped kitchen is positioned at the rear with access to a beautiful, south facing terrace. Both bedrooms on the top floor are genuine double bedrooms while the property is completed with a modern bathroom, further shower room and ample storage throughout.

Riversdale Road is located moments away from Highbury Barn which offers a selection of sought-after local independents including Godfreys butchers, La Fromagerie, Da Mario's Deli, Bourne's Fishmongers and Highbury Vintners - a magnet for locals, and also drawing those from further afield. The property is a short walk away from the green, open spaces of Highbury Fields and Clissold Park along with a yoga studio and renowned local pub on its doorstep. Easy access to the popular and vibrant Stoke Newington Church Street provides a further variety of great boutiques, restaurants and cafes.

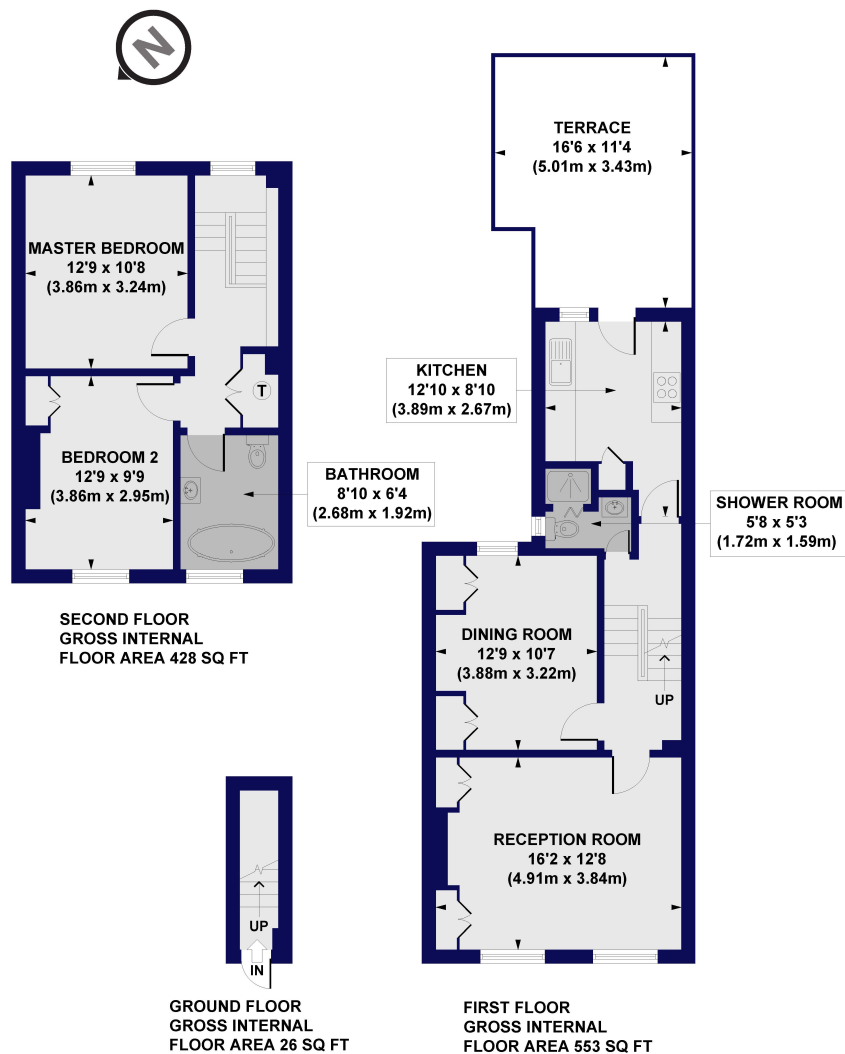
Transport links are well serviced by a selection of excellent bus routes as well as Arsenal underground station (Dissedilly line) within short walking distance along with Highbury & Islington and Finsbury Park

**Winkworth**



**Winkworth**

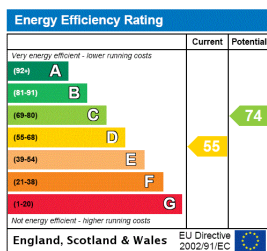
**Riversdale Road, N5**  
**Approx. Gross Internal Floor Area 1007 sq. ft / 93.58 sq. m**



All measurements of walls, doors, windows, fittings and appliances, including their size and location, are shown as standard sizes and do not constitute any warranty or representation by the seller, their agent or CP Creative. Any intending purchaser must satisfy himself by inspection or otherwise as to the correctness of the information contained in these plans. This plan is for illustrative purposes only and should be used as such by any prospective purchasers.

**Winkworth**

This floorplan is for illustration purposes only and is not to scale. The position and size of doors, windows, appliances and other features are approximate.



Highbury | 0207 989 7000 | highbury@winkworth.co.uk

**Winkworth**

winkworth.co.uk

See things differently

Winkworth wishes to inform prospective buyers and tenants that these particulars are a guide and act as information only. All our details are given in good faith and believed to be correct at the time of printing but they don't form part of an offer or contract. No Winkworth employee has authority to make or give any representation or warranty in relation to this property. All fixtures and fittings, whether fitted or not are deemed removable by the vendor unless stated otherwise and room sizes are measured between internal wall surfaces, including furnishings.