



LINDEN GARDENS, LONDON, W2  
£1,450,000 LEASEHOLD

## FANTASTIC HOUSE IN THE HEART OF NOTTING HILL GATE

North Kensington | 020 7792 5000 | northkensington@winkworth.co.uk

**Winkworth**

for every step...

*winkworth.co.uk*



## DESCRIPTION

Linden Gardens is a very desirable and quiet tree lined residential road which is moments from the hustle and bustle of Notting Hill Gate, allowing for easy access to Central London and other parts of the city.

This quaint house is split of three levels and benefits from a recent redecoration throughout. Comprising a large bright reception , two spacious double bedrooms , a second reception that is open plan with the kitchen and a modern bathroom.

Additional benefits include a private balcony.

## AT A GLANCE

- Long Lease 950+ Years
- 2 Double Bedrooms
- 1 Family Bathroom
- 1 WC
- New Eat-In Kitchen
- Private Balcony
- EPC Rating C
- Amazing Location
- Potential to Extend Property

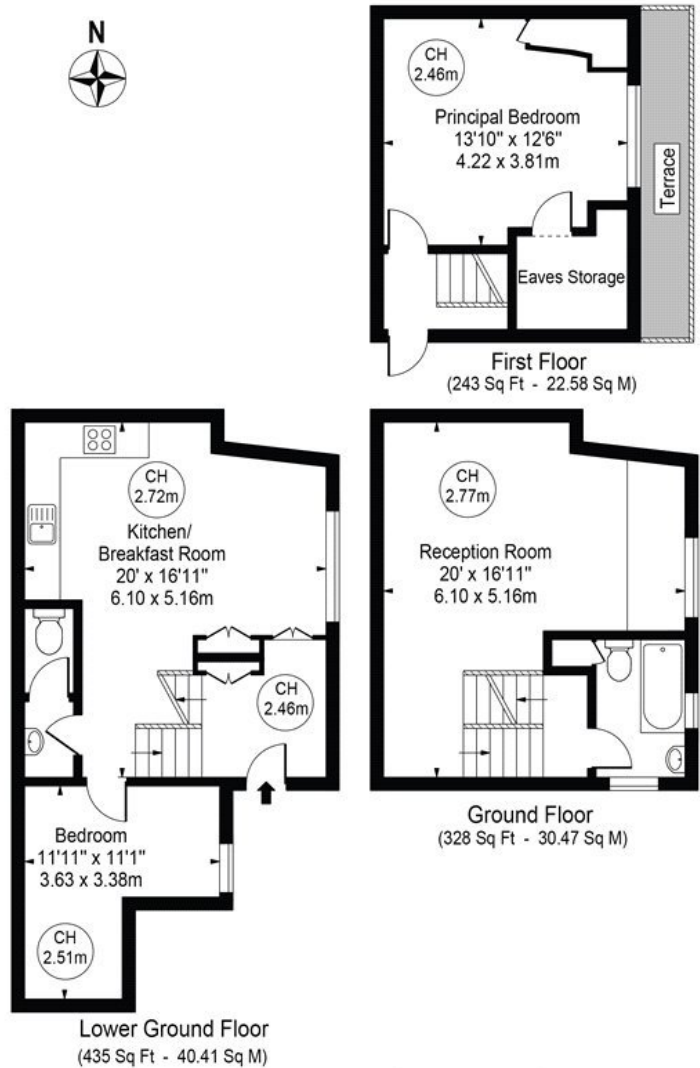




# Linden Gardens

Approx. Total Internal Area 1006 Sq Ft - 93.46 Sq M  
(Including Eaves Storage & Restricted Height Area)

Approx. Gross Internal Area 961 Sq Ft - 89.28 Sq M  
(Excluding Eaves Storage & Restricted Height Area)

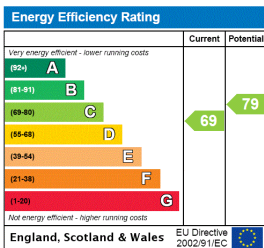


For Illustration Purposes Only - Not To Scale

This floor plan should be used as a general outline for guidance only and does not constitute in whole or in part an offer or contract. Any intending purchaser or lessee should satisfy themselves by inspection, searches, enquiries and full survey as to the correctness of each statement. Any areas, measurements or distances quoted are approximate and should not be used to value a property or be the basis of any sale or let.

Copyright Morriarti Photography & Design LTD

This floorplan is for illustration purposes only and is not to scale. The position and size of doors, windows, appliances and other features are approximate.



North Kensington | 020 7792 5000 | northkensington@winkworth.co.uk

**Winkworth**

for every step...

winkworth.co.uk

Winkworth wishes to inform prospective buyers and tenants that these particulars are a guide and act as information only. All our details are given in good faith and believed to be correct at the time of printing but they don't form part of an offer or contract. No Winkworth employee has authority to make or give any representation or warranty in relation to this property. All fixtures and fittings, whether fitted or not are deemed removable by the vendor unless stated otherwise and room sizes are measured between internal wall surfaces, including furnishings.