



OLD STREET, LONDON, EC1V
£1,350 PER WEEK

**FOUR DOUBLE BEDROOM, FOUR BATHROOM
APARTMENT WITH PRIVATE ROOF TERRACE.**

Shoreditch | 020 7749 7650 | shoreditch@winkworth.co.uk

Winkworth

Tenant Fees Apply: Details of fees for tenant referencing, tenancy agreement admin fees and renewal fees are available on the Winkworth website and the link can be found with the displayed rent for the property. Tenants should ensure they are fully conversant with these upfront fees and other costs that are involved at the outset of the tenancy before making an offer to rent and your local Winkworth office will provide written details upon request.

winkworth.co.uk

See things differently



DESCRIPTION:

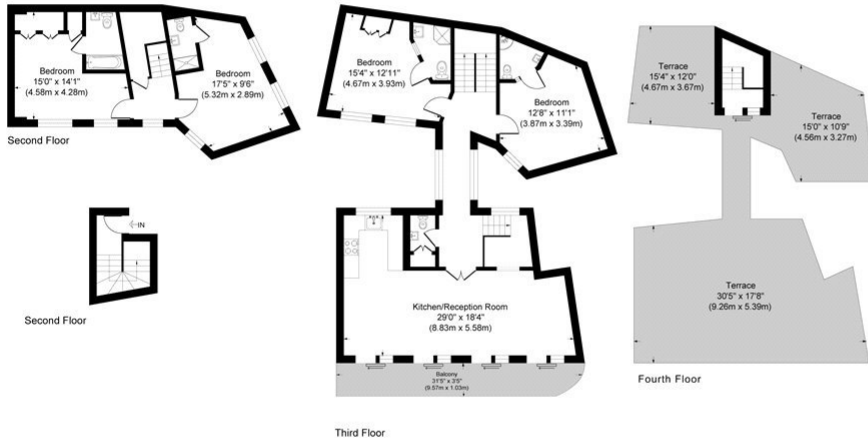
A stylish, well-proportioned, four double bedroom, four bathroom apartment that has been finished to an impeccable standard.

This spectacular apartment is surrounded by the brilliant amenities of Old Street, Rivington Street and Shoreditch. This property is composed of a good size reception room leading into a contemporary open-plan kitchen. There are four double bedrooms that all have an abundance of fitted storage. The apartment has four modern bathroom en-suites and has been decorated to a high standard. Upstairs you will find a private roof terrace with breathtaking views from Shoreditch's prime zone, the triangle. - perfect for professional sharers.

Winkworth



Winkworth



Old Street

Approximate Gross Internal Area
Second Floor = 49.6 sq m / 534 sq ft
Third Floor = 91.8 sq m / 988 sq ft
Total = 141.4 sq m / 1522 sq ft

This plan is for layout guidance only. Not drawn to scale unless stated. Windows and door openings are approximate. Whilst every care is taken in the preparation of this plan, please check all dimensions, shapes and compass bearings before making any decisions reliant upon them.

powered by:

THE360IMAGE
www.the360image.co.uk

This floorplan is for illustration purposes only and is not to scale. The position and size of doors, windows, appliances and other features are approximate.

Shoreditch | 020 7749 7650 | shoreditch@winkworth.co.uk

Winkworth

winkworth.co.uk

See things differently

Winkworth wishes to inform prospective buyers and tenants that these particulars are a guide and act as information only. All our details are given in good faith and believed to be correct at the time of printing but they don't form part of an offer or contract. No Winkworth employee has authority to make or give any representation or warranty in relation to this property. All fixtures and fittings, whether fitted or not are deemed removable by the vendor unless stated otherwise and room sizes are measured between internal wall surfaces, including furnishings.