



WORMHOLT ROAD, LONDON, W12

£1,250,000 FREEHOLD

A RARE OPPORTUNITY TO PURCHASE THIS IMPRESSIVE FOUR/FIVE BEDROOM LATE EDWARDIAN FAMILY HOME OFFERING IN EXCESS OF 1900 SQUARE FEET OF LIVING SPACE

Shepherds Bush | 020 8735 3266 | shepherdsbush@winkworth.co.uk

A member of  OnTheMarket.com

winkworth.co.uk/shepherds-bush

Winkworth

for every step...



DESCRIPTION:

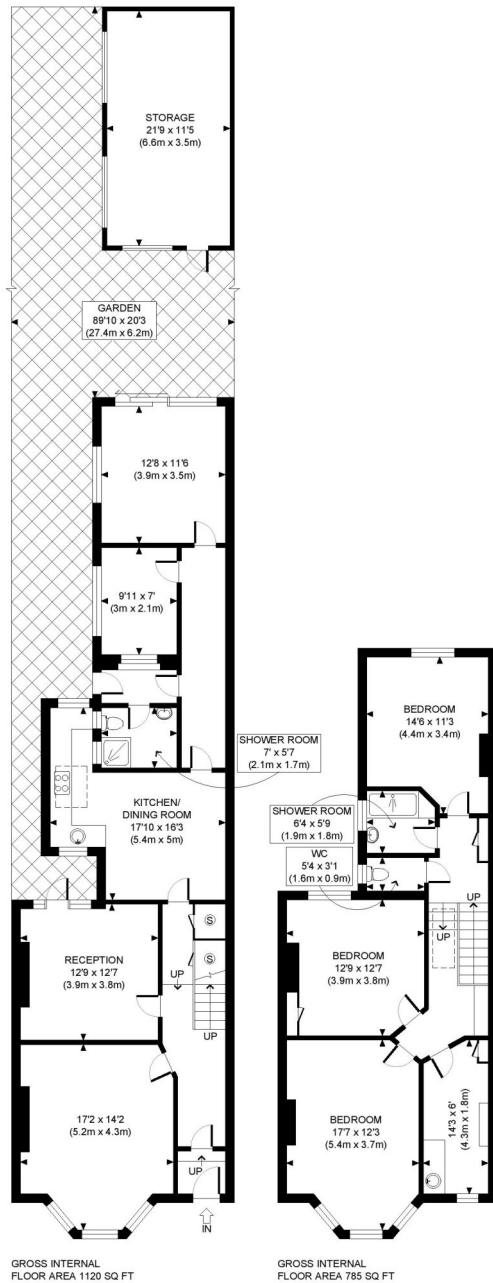
A rare opportunity to purchase this impressive four/Five Bedroom late Edwardian family home offering in excess of 1900 square feet of living space. This home boasts an enormous rear garden with work/home office unit and has the potential to be extended further (subject to the relevant consents). Accommodation on the ground floor consists of a light and bright front reception room, Double bedroom, a large and light through reception with separate eat in kitchen and beyond to a bathroom and further double bedroom which leads to the palatial rear garden. On the first floor there are three further double bedrooms a bathroom and utility room. The house is offered to the market chain free and with a warm homely feel is sure to be well received.

LOCATION:

Wormholt Road is a popular residential area of attractive period properties. Mostly family homes, the area offers good access to Shepherds Bush and the excellent transport facilities and shops offered. The 8 acres of Wormholt Park are also a short walk away.





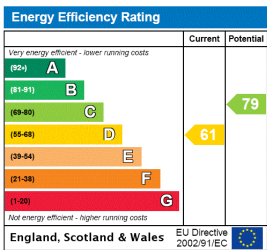


GROSS INTERNAL FLOOR AREA 1120 SQ FT
 GROSS INTERNAL FLOOR AREA 785 SQ FT

APPROX. GROSS INTERNAL FLOOR AREA WITH STORAGE: 2153 SQ FT/ 200 SQM
 APPROX. GROSS INTERNAL FLOOR AREA WITHOUT STORAGE: 1905 SQ FT/ 177 SQM

PROPERTY PHOTO PLANS CO.UK
 ONE STOP SHOP FOR PROPERTY MARKETING

This plan is for illustrative purposes only and should be used as such by any prospective client. Whilst every attempt has been made to ensure the accuracy of the Floor Plan contained here, measurements of the doors, windows, rooms and any other items are approximate and no responsibility is taken for any errors, omissions, or misstatement. The services, systems and appliances shown have not been tested and no guarantee as to the operability or efficiency can be given.



Shepherds Bush | 020 8735 3266 | shepherdsbush@winkworth.co.uk



winkworth.co.uk/shepherds-bush

for every step...

Winkworth wishes to inform prospective buyers and tenants that these particulars are a guide and act as information only. All our details are given in good faith and believed to be correct at the time of printing but they don't form part of an offer or contract. No Winkworth employee has authority to make or give any representation or warranty in relation to this property. All fixtures and fittings, whether fitted or not are deemed removable by the vendor unless stated otherwise and room sizes are measured between internal wall surfaces, including furnishings.