



MYLNE STREET, LONDON, EC1R
£3,450,000 FREEHOLD

A WONDERFULLY IMPOSING GRADE II LISTED GEORGIAN TOWN HOUSE JUST OFF ARGUABLY ONE OF LONDON'S MOST SOUGHT AFTER GARDEN SQUARES.

Clerkenwell | 020 7405 1288 | clerkenwell@winkworth.co.uk



for every step...

winkworth.co.uk



DESCRIPTION:

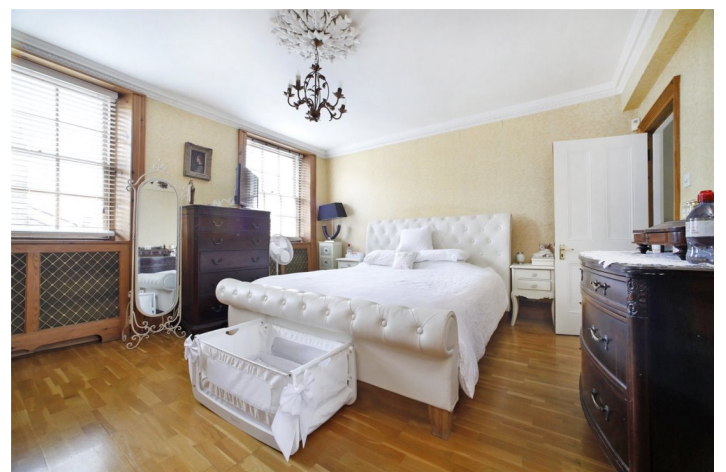
This five bedroom house retains much of its original detail but will require some refurbishment throughout, the house also benefits from a South-East facing garden and West facing façade, exposing itself to an abundance natural light.

Myln Street is ideally located for all of the amenities of Upper Street and Clerkenwell. Angel, Kings Cross (Eurostar) and Farringdon (impending Crossrail) Stations are all close by. Trendy hotspots such as Exmouth Market are also nearby.



Winkworth

for every step...



Winkworth

for every step...

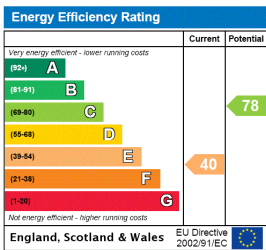
Myline Street



Approx Gross Internal Area 2435 Sq Ft - 226.21 Sq M

This floor plan should be used as a general outline for guidance only and constitute in whole or in part an offer or contract. Any intending purchaser or lessee should satisfy themselves by inspection, searches, enquiries and full survey as to the correctness of each statement. Any areas, measurements or distances quoted are approximate and should not be used to value a property or be the basis of any sale or let.

This floorplan is for illustration purposes only and is not to scale. The position and size of doors, windows, appliances and other features are approximate.



Clerkenwell | 020 7405 1288 | clerkenwell@winkworth.co.uk



for every step...

winkworth.co.uk

Winkworth wishes to inform prospective buyers and tenants that these particulars are a guide and act as information only. All our details are given in good faith and believed to be correct at the time of printing but they don't form part of an offer or contract. No Winkworth employee has authority to make or give any representation or warranty in relation to this property. All fixtures and fittings, whether fitted or not are deemed removable by the vendor unless stated otherwise and room sizes are measured between internal wall surfaces, including furnishings.