



SUNDERLAND TERRACE, W2

£6,500 PER WEEK (£28,166.66 PCM) Furnished

A WONDERFUL END OF TERRACE, PERIOD HOUSE EXTENDING TO OVER 3,600 SQ.FT. IN THIS CHARMING AND PEACEFUL NOTTING HILL LOCATION.

Short Let, 6 Bedrooms, 4 Reception Rooms, 4 Bathrooms, House, End of Terrace, Garden, Patio, Balcony, Period, Furnished, 3603 Sq. Ft.

Winkworth



DESCRIPTION:

Entered on the raised ground floor to a large entrance hall which opens to an interconnecting kitchen dining room. Ornate stairs lead to the first floor where there is a fabulously proportioned double drawing room, with two French doors opening out to the balcony. There are four bedrooms on the second and third floor, the master with an enviable ensuite bathroom. At the top of the house is a versatile room which is currently used as a games room. On the lower ground floor there are two bedrooms, two bathrooms and a further playroom. The garden wraps around the house and enjoys westerly evening sun, there is a further terrace on the raised ground floor. The property is offered fully furnished for 5-6 months and bills to be included in the rent. Shorter lets by separate negotiation.

LOCATION:

Sunderland Terrace is a sought after, peaceful tree lined street to the North West of Central Notting Hill. The property is located on the corner of Alexander Street and Sunderland Terrace, a two-minute walk from the Royal Oak tube station and a five-minute walk from Westbourne Grove.

LOCAL AUTHORITY AND COUNCIL TAX BAND:

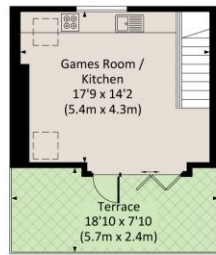
City Of Westminster (Band H)



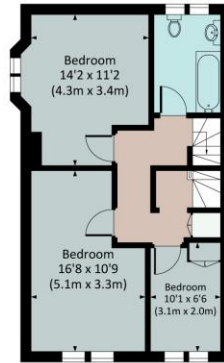
SUNDERLAND TERRACE, W2

Approximate Gross Internal Area

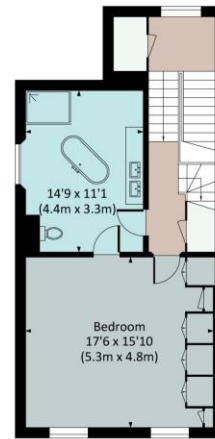
334.7 sq m / 3603 sq ft



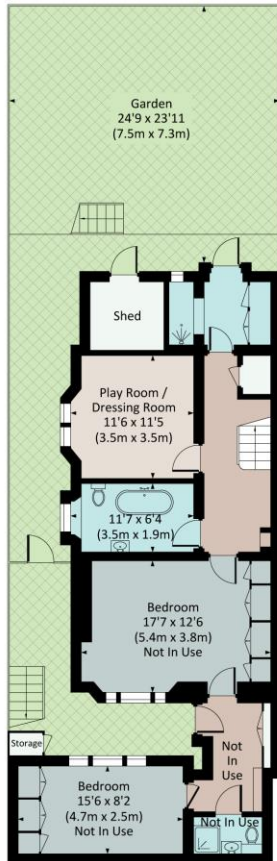
FOURTH FLOOR



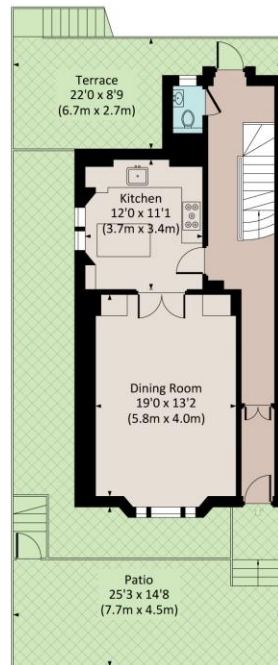
THIRD FLOOR



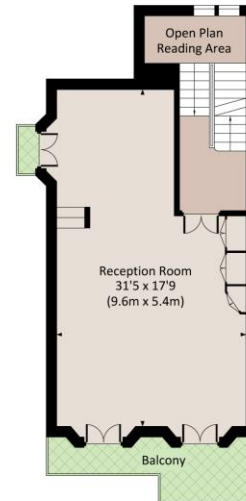
SECOND FLOOR



LOWER GROUND FLOOR



UPPER GROUND FLOOR



FIRST FLOOR



All measurements have been made in accordance with RICS code of Measuring Practice which are approximate only and only for illustrative purposes. For the avoidance of doubt, Dowling Jones Design shall not be liable for any reliance on these measurements. © 2023 www.dowlingjones.com 020 7610 9933

This floorplan is for illustration purposes only and is not to scale. The position and size of doors, windows, appliances and other features are approximate.

EPC TBC

Notting Hill | 0207 727 3227 | nottinghill@winkworth.co.uk

Winkworth

winkworth.co.uk

for every step...

winkworth wishes to inform prospective buyers and tenants that these particulars are a guide and act as information only. All our details are given in good faith and believed to be correct at the time of printing but they don't form part of an offer or contract. No Winkworth employee has authority to make or give any representation or warranty in relation to this property. All fixtures and fittings, whether fitted or not are deemed removable by the vendor unless stated otherwise and room sizes are measured between internal wall surfaces, including furnishings.