



VICTORIA ROAD, NW6

£2,500 PER MONTH PART FURNISHED

**A STUNNING APARTMENT WITH MANICURED
PRIVATE GARDEN LOCATED IN THE HEART OF
QUEENS PARK.**

Kensal & Queens Park | 0208 960 4947 | kensalrise@winkworth.co.uk

Winkworth

for every step...

winkworth.co.uk



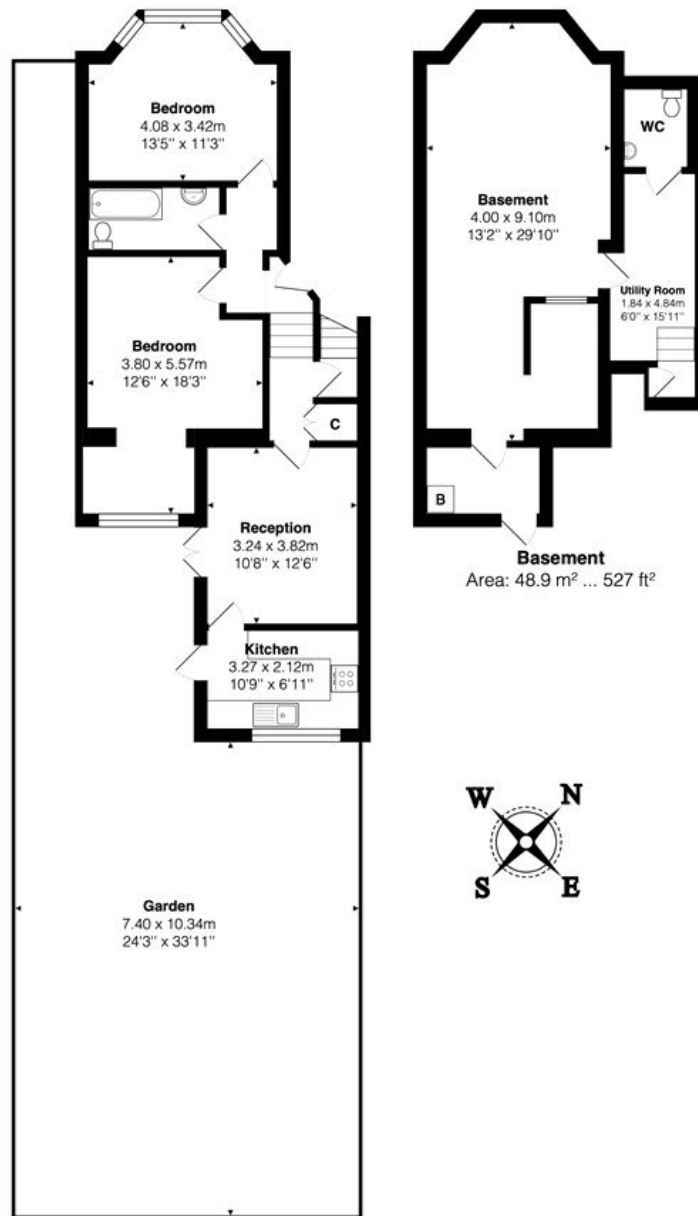
DESCRIPTION:

AT A GLANCE

- Two Double Bedrooms
- Ground Floor
- Private Garden
- Separate Rear Kitchen
- Part Furnished
- Fantastic Location In Queens Park







Ground Floor
Area: 65.7 m² ... 707 ft²
Total Area: 114.6 m² ... 1234 ft² (excluding garden)
All measurements are approximate and for display purposes only

This floorplan is for illustration purposes only and is not to scale. The position and size of doors, windows, appliances and other features are approximate.

Energy Efficiency Rating	
	Potential
Very energy efficient - lower running costs	
(92+) A	
(81-91) B	
(69-80) C	73
(55-68) D	
(39-54) E	55
(21-38) F	
(1-20) G	
Not energy efficient - higher running costs	
England, Scotland & Wales	EU Directive 2002/91/EC

Kensal & Queens Park | 0208 960 4947 | kensalrise@winkworth.co.uk



for every step...

winkworth.co.uk

winkworth wishes to inform prospective buyers and tenants that these particulars are a guide and act as information only. All our details are given in good faith and believed to be correct at the time of printing but they don't form part of an offer or contract. No Winkworth employee has authority to make or give any representation or warranty in relation to this property. All fixtures and fittings, whether fitted or not are deemed removable by the vendor unless stated otherwise and room sizes are measured between internal wall surfaces, including furnishings.