



FLAT 44 BRYANT APARTMENTS, PERCEVAL SQUARE, COLLEGE ROAD, HARROW,
MIDDLESEX, HA1

£500,000 LEASEHOLD

VIEWS OVER HARROW ON THE HILL

Harrow | 020 8861 3933 | harrow@winkworth.co.uk

Winkworth

for every step...

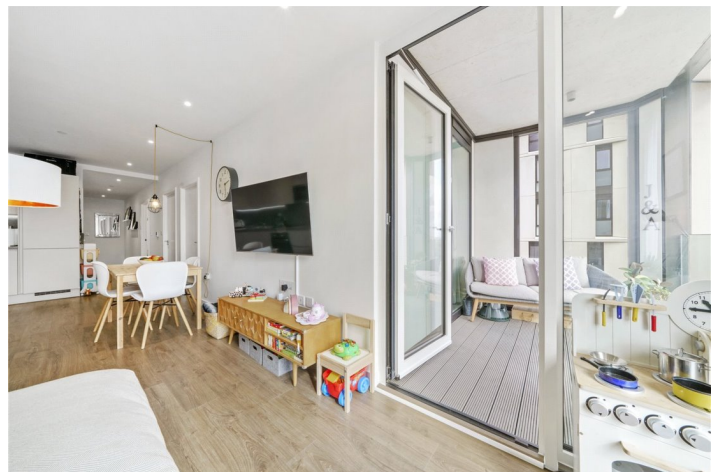
winkworth.co.uk



DESCRIPTION:

Winkworth Harrow are proud to introduce this 2 bedroom sixth floor luxury apartment, built in 2018 and located in the heart of Harrow Town Centre, provides a fabulous home for professionals, first time buyers, commuters or investors looking to add to their portfolio.

Lease	995 years
Council Tax	Band D
Ground Rent	£525
Service Charge	£2800



Winkworth

for every step...



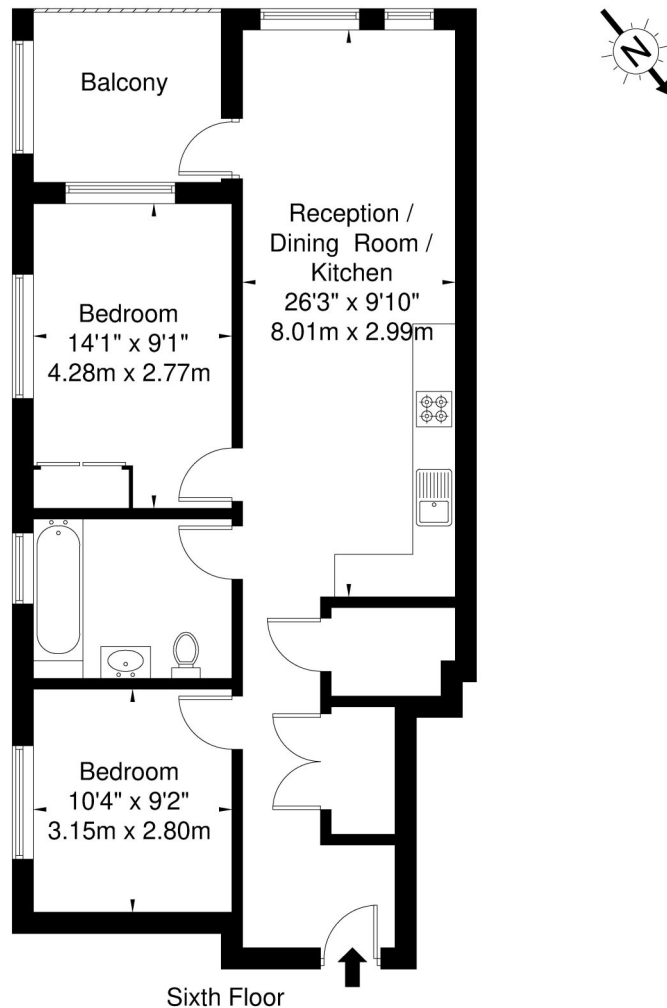
The property is in an excellent location, within walking distance of Harrow's wide range of shopping, leisure and transport facilities including Harrow-on-the-Hill Underground Station with its Metropolitan Line and Chiltern (National Rail) Line services leading into the heart of London and beyond. The property is close to both the St Ann's and the St George's Shopping Centres, Northwick Park Hospital, various local parks and several sought-after schools including the famous Harrow Boys' Public School.

Winkworth

for every step...

Bryant Apartments, Perceval Square College Road HA1 1GX

Approx. Gross Internal Area = 65.2 sq m / 701 sq ft



Ref

Copyright

**B L E U
P L A N**

The Floor plan is not to scale and measurements and areas shown are approximate and therefore should be used for illustrative purposes only. The plan has been prepared in accordance with the RICS code of Measuring Practice and whilst we have confidence in the information produced it must not be relied on. If there is any aspect of particular importance, you should carry out or commission your own inspection of the property.
Copyright @ BLEUPLAN

This floorplan is for illustration purposes only and is not to scale. The position and size of doors, windows, appliances and other features are approximate.

Harrow | 020 8861 3933 | harrow@winkworth.co.uk

Winkworth

for every step...

winkworth.co.uk

Winkworth wishes to inform prospective buyers and tenants that these particulars are a guide and act as information only. All our details are given in good faith and believed to be correct at the time of printing but they don't form part of an offer or contract. No Winkworth employee has authority to make or give any representation or warranty in relation to this property. All fixtures and fittings, whether fitted or not are deemed removable by the vendor unless stated otherwise and room sizes are measured between internal wall surfaces, including furnishings.